

THE SENTINEL

1932





ARCHIVES



FRIENDS OF THE LIBRARY

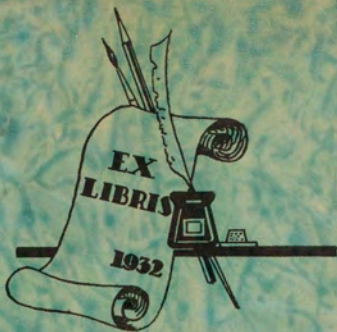
Montana State University

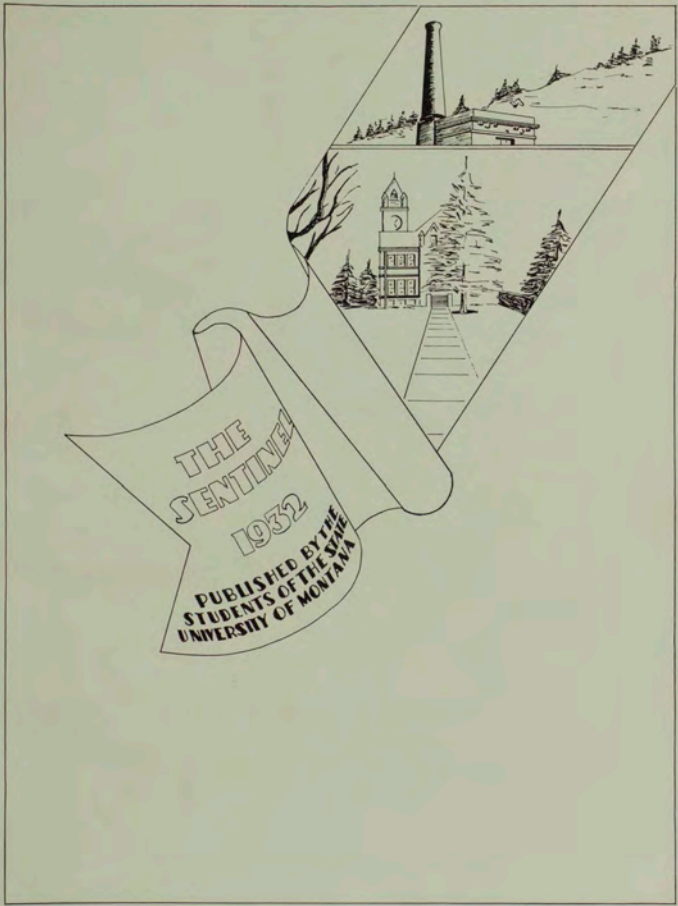
Gift

Dr. Morton J. Elrod

from

Mary Elrod Ferguson





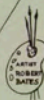
COPYRIGHT



CONTENTS

BOOKS

1. UNIVERSITY
2. CLASSES
3. ATHLETICS
4. ORGANIZATION
5. SCENIC
6. ACTIVITIES
7. ADVERTISING



DEDICATION



**WITH UTMOST RESPECT, WE,
THE STAFF OF THE 1952 SENTINEL,
DEDICATE THIS YEARBOOK TO
OUR FATHERS AND MOTHERS,
WHO BY THEIR FORETHOUGHT
AND ARDUOUS EFFORTS,
HAVE MADE POSSIBLE OUR
UNIVERSITY EDUCATIONS.**

In Memoriam

CHARLOTTE ELIZABETH SMITH—'33

July 2, 1931

HELEN D'ORAZI KENNEDY—'32

February 19, 1932

JAMES HOWARD TOBIN—'34

April 22, 1932

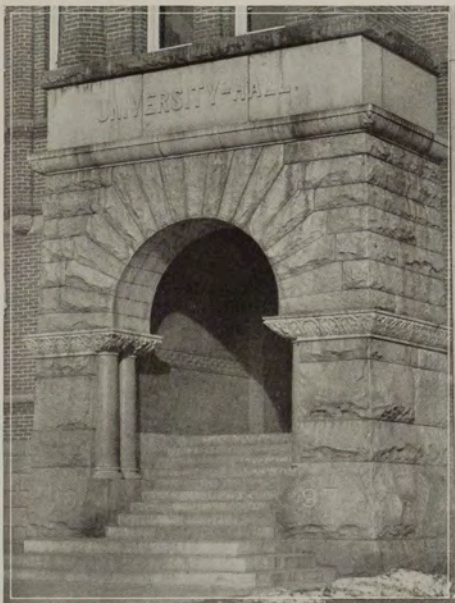
JACK NESBITT ROCHESTER—'35

April 24, 1932

UNIVERSITY



ADMINISTRATION



Administration

EXECUTIVE BOARD

C. H. Clapp
S. J. Coffee

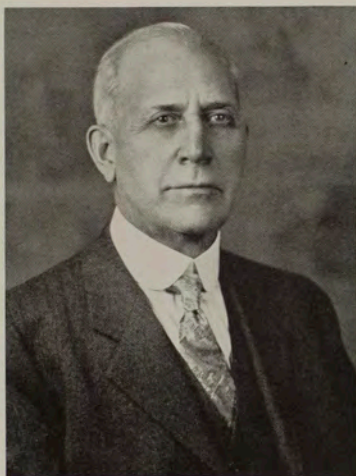
L. E. Bunge
J. B. Speer



OFFICERS

Melvin A. Brannon	- - -	Chancellor of the University of Montana
Charles H. Clapp	- - - - -	President of the State University
Frederick C. Scheuch	- - - - -	Vice President
Richard H. Jesse	- - - - -	Dean of the Faculty
J. E. Miller	- - - - -	Dean of Men
Mrs. Harriet Rankin Sedman	- - - - -	Dean of Women
Robert C. Line	- - -	Dean of the School of Business Administration
Freeman Daughters	- - - - -	Dean of the School of Education
Thomas C. Spaulding	- - - - -	Dean of the School of Forestry
Arthur L. Stone	- - - - -	Dean of the School of Journalism
C. W. Leaphart	- - - - -	Dean of the School of Law
DeLoss Smith	- - - - -	Dean of the School of Music
John Suchy	- - - - -	Acting Dean of the School of Pharmacy
J. B. Speer	- - - - -	Registrar and Business Manager
Philip O. Keeney	- - - - -	Librarian
W. E. Maddock	- - - - -	Director of the Public Service Division and Board of Recommendations





The dedication of the 1932 Sentinel to the parents of the students of the State University of Montana is appropriate and timely. Opportunities for all education, elementary, secondary, and higher, enjoyed by the youth of Montana have been provided by their parents and their associates. The hunger of Montana parents for education for their children during lean as well as fat years in Montana has been unbelievably great. Most fitting, therefore, is the gracious effort of the Sentinel editor to follow the injunction of the great seers and prophets of the ages: "Honor thy father and thy mother, that thy days may be long in the land which Jehovah thy God giveth thee."

MELVIN A. BRANNON,
Chancellor.



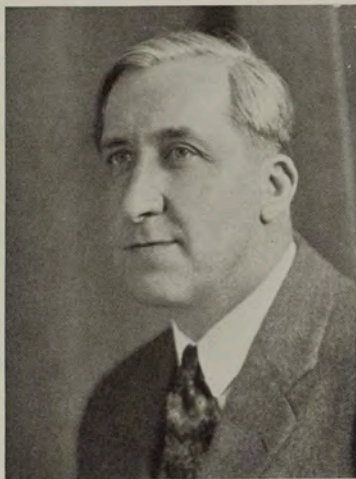
Departments



CHAIRMEN

M. J. Elrod	- - - - -	Biology
J. W. Severy	- - - - -	Botany
R. H. Jesse	- - - - -	Chemistry
Harry Turney-High	- - - - -	Economics and Sociology
H. G. Merriam	- - - - -	English
C. H. Riedell	- - - - -	Fine Arts
F. C. Scheuch	- - - - -	Foreign Languages
J. P. Rowe	- - - - -	Geology
J. E. Miller	- - - - -	History and Political Science (Acting Chairman)
Helen Gleason	- - - - -	Home Economics
Philip O. Keeney	- - - - -	Library Economy
N. J. Lennes	- - - - -	Mathematics
Major G. L. Smith	- - - - -	Military Science
W. E. Schreiber	- - - - -	Physical Education
G. D. Shallenberger	- - - - -	Physics
F. O. Smith	- - - - -	Psychology





I am pleased to learn that the 1932 Sentinel is to be dedicated to the fathers and mothers of Montana. No other group has made such sacrifices for higher education or has made them so gladly. Their sacrifices are, of course, primarily for the sake of their own sons and daughters; that from the benefits of higher education, their sons and daughters may live more satisfying and happier lives than the parents have lived. There is also the hope that by creating new goals and ideals or by securing wider acceptance of well tested principles, as yet never truly put into practice, a better world may be moulded in which their sons and daughters and grandchildren may live.

CHARLES H. CLAPP,
President.





What we owe our fathers and mothers:

- * * * "to cultivate the open mind:
- to combine the three great heritages of education,
- always to listen to the man who knows;
- never to laugh at new ideas;
- to know the secret of getting along with other people:
- to cultivate the habit of success;
- to know as a man thinketh so he is;
- to link ourselves with a great cause;
- to build an ambition picture to fit our abilities:
- to try to feel the emotions we ought to feel;
- to keep busy at our highest natural level:
- to know it is never too late to learn;
- never to lose faith in the man we might have been;
- to achieve the masteries that make us world citizens;" * * *

(WIGGAM)

FREDERICK C. SCHEUCH,
Vice President.





It has been a real effort for many parents to send their sons and daughters to the State University this year but that effort has been rewarded in the splendid co-operation between students and faculty during the year 1931-1932. It is with pleasure that we look back over the results of the loyalty, intelligence and industry that have made this year a true success.

R. H. JESSE,
Dean of the Faculty.

The mothers and fathers of college students are entitled to the honors. In our generation many of them have subordinated almost all other interests to putting their children through college. Their faith in the value of a college training seems unbounded. The parents deserve the utmost co-operation from the sons and daughters in making the most of opportunities at college. May their dreams of success for their children come true!

J. B. SPEER,
Registrar and Business Manager.





Herbert Spencer said that education is a preparation for living. High scholarship and participation in student activities which are the best opportunities offered by a university for this preparation have marked this year at Montana. Mothers and fathers who have made sacrifices to send their sons and daughters here may well look with gratification at these results.

J. E. MILLER,
Dean of Men.



The mothers and fathers of Montana have sacrificed much to send their sons and daughters to the State University this year. If they could realize the gratitude and appreciation expressed in the serious-minded attitude of the students, they would feel that the confidence which they have placed in their children is justified.

HARRIET RANKIN SEDMAN,
Dean of Women.





The end of four of the happiest years of our lives finds us loath to leave the Alma Mater who has given us so much. Behind our University stand our mothers and fathers. They have created this school for us and they have made it possible for us to carry away with us the beautiful memory of days at Montana.

ELLA POLLINGER,
A. W. S. President.



Intangible is our feeling for the parents who have given us these pleasant Montana years. It is difficult to put into any words the true deserts which they have coming. Many of us have attained our educations through years of sacrifice on their parts. They command our respect and our only hope is that we may in some way measure up to their expectations.

All that we may say is "thank you," and they will understand.

BOB HENDON,
A. S. U. M. President.





School of Business Administration

Training for the general field of business and specialized training in accounting are the aims of the School of Business Administration under the supervision of Dean Robert C. Line. The school offers a business training in banking, finance, transportation, marketing, merchandising, trading and public utilities.

The school first was organized at the State University in 1914. Shirley J. Coon, the first dean, was succeeded by Dean Line, a Montana graduate who had done advanced work at Harvard university. Since the school's organization there has been a rapid increase in enrollment which ranks it among the larger schools on the campus today.



R. C. Line, Dean

All women in the school are organized into the Commerce club which furthers the interests of women in business. Men in the school who have done distinctive work are organized in Alpha Kappa Psi, men's national professional fraternity.

Two years ago the School of Business Administration inaugurated courses in typewriting and shorthand, and a large enrollment has appeared in both divisions under the instruction of Miss Emily Maclay.



School of Education

The main objectives of the School of Education are training superintendents, principals and supervisors for the public schools of Montana and training teachers for the junior and senior high schools and special subjects such as music, art, physical education and home economics; to provide assistance to the schools of the state in the form of testing programs, extension work and expert counsel; to provide opportunities within the state for those who wish to pursue graduate work toward the Master's degree in Education; to encourage investigation and research in the schools of the state; and finally, to unify and co-ordinate the agencies of the State University which contribute to the preparation of those who expect to enter school work.

The school offers curricula for the student working for the degree of Bachelor of Arts in Education and Master of Arts and with the completion of institutional requirements the Certificate of Qualification to Teach is granted.

Practical work in the senior year in the School of Education is given to the student in teaching in the Missoula schools under the supervision of the regular instructors.



Freeman Daughters, Dean



School of Forestry

The School of Forestry has among its enrollment students from almost every state in the union. Instruction along two distinct lines is provided: An undergraduate course of four years allowing specialization in the various branches of forestry, and a graduate course leading to the degree of Master of Science.



T. C. Spaulding, Dean

In 1913 the state legislature established the School of Forestry at the State University. In 1909 the Government Forest service, in co-operation with school officials, had established a Ranger school on the campus but in 1910 the State University took over the management of the school. The Ranger school was discontinued six years ago. The School of Forestry now ranks among the highest in the United States.

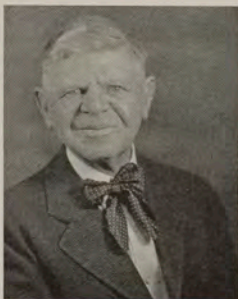
Students and faculty members in the school are organized into a Forestry club which promotes scientific discussion of forestry problems and fosters social spirit among its members.



School of Journalism

Acquaintanceship with the fundamentals of journalism; the art of concise, tolerant and kindly treatment of news; appreciation of the importance of definite news policy—these, combined with as broad a background as possible in literature, science, history and economics, are the aims of the School of Journalism. Courses in journalism were first given in 1912 and in 1914 the School of Journalism was established at the State University, with Arthur L. Stone as dean. The school is a member of the American Association of Schools of Journalism.

The Press club is open to all students in the school, while Sigma Delta Chi, men's international professional fraternity, and Theta Sigma Phi, women's national honorary fraternity, bid students of distinction in the school. The Montana Kaimin furnishes practical training for journalism students and is the only campus newspaper. It is printed in the shop owned by the school, where a comprehensive course in printing is offered to seniors, under the instruction of Charles W. Hardy. The shop is equipped to handle all types of printing and only work of the highest grade is turned out from it.



A. L. Stone, Dean



School of Law

The School of Law offers a degree of Bachelor of Laws to students finishing three years of legal work and two years in pre-legal preparation. The case system of study is the method used in the school and it is the only school on the campus definitely using the honor system among students.

From the date of its foundation in 1911, the school has required two year's preparation and now it admits no special students. It is a member of the Association of American Law Schools and is approved by the American Bar association.



C. W. Leaphart, Dean

Students in the School of Law are organized in the Law School association. Phi Delta Phi, men's national honorary legal fraternity, is open to men students showing distinctive ability in the profession.

The library in the school includes more than twenty-three thousand volumes and is being added to each year. The Anaconda Copper Mining company donated the seven thousand-volume library of the late Senator W. A. Clark to the school three years ago and increased the size of the library considerably. Generous gifts of Mrs. W. W. Dixon and Judge John J. McHatton also have increased its size.





School of Music

Students in the School of Music are graduated with the degree of Bachelor of Arts with a major in music. This course is for supervisors and teachers of music in the public schools and covers a four-year period. Individual lessons in music to students outside of the school are given by the faculty in piano, voice, violin, organ, wind instruments.

DeLoss Smith has been dean of the school since its establishment in 1914. Previous to this time piano instruction was given at the State University. The school occupies part of the third floor of Main hall and the music practice house on University avenue.

Sigma Alpha Iota, women's national music fraternity, is made up of juniors and seniors who have shown outstanding musical ability. The State University Symphony orchestra, under the direction of Professor A. H. Weisberg, offers practical experience as do the men's and women's glee clubs.

Dean Smith this year organized a Choral Society composed of the members of the men's and women's glee clubs.



DeLoss Smith, Dean



School of Pharmacy

Two degrees are offered by the School of Pharmacy at the State University. The degree of Pharmaceutical Chemist is granted to students finishing the three-year course, and the degree of Bachelor of Science in Pharmacy to those finishing the four-year course. The latter degree prepares for teachers of pharmacy, food and drug inspectors and analysts, manufacturing pharmacists, and gives preparation for pre-medical study in higher institutions.



John Suchy, Acting Dean

In 1913 the school was transferred to Missoula from Bozeman where it had been established in 1907. It is a member of the American Association of Colleges of Pharmacy and receives helpful co-operation from the Montana State Pharmaceutical association.

Social and scientific stimulus is given to students in the Pharmacy club open to both men and women in the school. Kappa Psi, men's national pharmacy fraternity, and Kappa Epsilon, women's national pharmaceutical fraternity, are honorary for students of distinction in the school.

John Suchy is acting dean of the school this year, filling the position of Dean C. E. Mollett who is studying for his doctor's degree at the University of Florida.

CLASSES





Lockwood

SENIOR CLASS OFFICERS

Glenn O. Lockwood	- - - - -	President
Frank McCarthy	- - - - -	Vice President
Mary Hegland	- - - - -	Secretary
Jack White	- - - - -	Treasurer



McCarthy



Hegland



White





GERALD G. ALQUIST, Conrad

Journalism; Sigma Chi; Press club 1, 2, 3, 4; Kaimin associate editor 3, 4; Sentinel staff 3, 4; Sigma Delta Chi 3; secretary-treasurer 4; Publications board 3, chairman 4.



EILMA ARNETT, Columbia Falls

Biology; Fellowship group; Phi Sigma; Quadrons.



E. P. ASTLE, Hardin

Journalism; Sigma Phi Epsilon; Sigma Delta Chi; vice president 4; Press club 1, 2, 3, 4; president 4; Newman club 1, 2, 3, 4; Kaimin staff 2, 3, 4; columnist 3, 4; Sentinel humorist 3, 4; band 1, 2; State University Players.



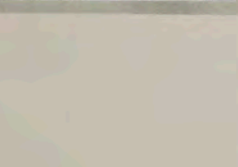
EDITH MAY BALDWIN, Helena

Mathematics; Kappa Kappa Gamma; soccer, all-star team 1; hockey 2, 3; May Fete 1, 2; Hi-Jinx 2; Delta Psi Kappa 3; president 4; A. W. S. 3; vice president, North hall 1; Quadrons.



MARY VIRGINIA BALLARD, Dillon

English; Kappa Alpha Theta; Quadrons.



CLYDE BANFIELD, Bozeman

Chemistry; M club 2, 3, 4; M club tournament 2, 3, 4.

MIRIAM LUCILE BARNHILL, Missoula

Foreign Language; Kappa Kappa Gamma; Tanan 2; Mortar Board 4; A. S. U. M. vice president 4; Masquers 2, 3, 4; secretary 3; Hi-Jinx 1, 2, 3, 4; assistant manager 2; manager 3; May Fete 1; Co-ed Formal 1, 2, 4; business manager 4; A. W. S. executive board 4; Pan-Hellenic 4; secretary 4; Junior Prom committee 2, 3; Big Sister Tea committee 3, 4; Co-ed Prom committee 3; French club 1, 2; Spanish club 2, 3; A. S. U. M. social committee chairman 4; Quadrons 4.



KENNETH BEECHEL, Oregon, Wis.
Forestry; transfer from University of Wisconsin 3; Forestry club 3, 4, 5; Druids 4, 5; Wesley club; Glee club 3, 4; Forestry Kaimin business manager 4; editor-in-chief 5; chairman, foresters' hike 4; Forester's ball committee 4; Rifle club 3, 4, 5.

RUTH BERNIER, Helena
English; Delta Delta Delta; all-star riflery team 1; May Fete 1; Hi-Jinx 1; University Players 3, 4; Junior French club 1, 2; Quadrons.

RAY M. BIRCK, Corvallis
Business Administration.

THELMA BJORNEBY, Kalispell
Latin; Alpha Xi Delta; Varsity Vodvil 1; Corbin hall proctor 2, 3, 4; A. W. S. executive board 3, 4; Corbin hall president 4; Quadrons 4.

EVELYN BLAESER, Missoula
Foreign Language; Kappa Delta; Tanan 2; Masquers 3, 4; French club 3; treasurer 4; Hi-Jinx 1, 3; May Fete 2, 3; Pan-Hellenic council 2, 3; manager of Pan-Hellenic formal 3; A. S. U. M. social committee 4; Morlar Board 4; Co-ed Prom committee 3; Quadrons 4.

ROBERT BLAKESLEE, Brookings, S. D.
Journalism; Alpha Tau Omega; Left Paw, Bear Paw 2; Track 1, 2, 3; M club 2, 3, 4; Interscholastic committee 2, 3, 4; Sigma Delta Chi 3, 4; business manager, Frontier 4.

ROBERT H. BODEN, Missoula
Physics and Chemistry; Pi Mu Epsilon 2, 3, 4; French club 1, 2, 3; assistant track manager 1, 2; varsity track manager 3; M club; Kappa Tau 3, 4.

ELSIE BOELTER, Harlowton
Foreign Languages; Quadrons.

ELEANOR BOLES, Kalispell
History; Delta Delta Delta; A. W. S. representative 4; Spanish club; Quadrons.

HAZEL BORDERS, Bozeman
Foreign Language; Kappa Delta; North hall dance committee 1; class treasurer 2; Tanan 2; president; track team 2; hockey team 2; dance committee 2; Interscholastic committee 2, 3; Junior Prom executive committee 3; French club 3, 4; Spanish club 3, 4; vice president 4; W. A. A. 2, 3; Hi-Jinx 3; Pan-Hellenic council 3, 4; Quadrons 4, president; chairman of Co-ed Prom 4; chairman of Senior Reception committee 4.





FRANK BORG, JR., Missoula
Chemistry; Sigma Chi.



ESTHER BOYD, Hobson
English; Quadrons.



BETTY BRADY, Wilsall
Education; Delta Gamma; Tanan 2; Varsity Vodvil.



MARGARET BRAYSON, Columbia Falls
Journalism; Theta Sigma Phi; French club 2; Press club 1, 2, 3, 4; vice president 3; Kaimin staff 3; associate editor 4; Newman club; Varsity Vodvil 2; Quadrons.



ROBERT JAMES BROWN, Missoula
Chemistry; Phi Lambda 2, 3, 4; president 4; Mathematics club; track 1; M club tournament.



WILLIAM A. BROWN, Helena
History; Phi Delta Theta; Masquers 1, 2, 3, 4; vice president 4; debate 1; Student Christian council 1; M club tournament 2, 3; Junior Prom committee 3; Junior garb 3; Kappa Kappa Psi 2, 3, 4; vice president 2, 3; band 1, 2; Hi-Jinx 2; Student Debate union 1, 2, 3; assistant circulation manager of the Sentinel 2; Traditions committee 2.



ROBERTA CARKEEK, Cameron
English; Kappa Delta; W. A. A. hockey team 2; A. W. S. executive board 2, 3; Seven Arts club 3, 4; Quadrons 4.



MARTIN W. CARSTENS, Missoula
Botany; Phi Sigma 3, 4; president 4; Purple Towers show.



BRUCE CENTERWALL, Crystal Bay, Minn.
Forestry; Sigma Phi Epsilon; Druids; Forestry club; football 1; intramural athletics 1, 2, 3, 4.



CATHERINE M. CESAR, Corvallis
Home Economics; Home Economics club 1, 2, 3, 4; Spanish club 2, 3, 4; Varsity Vodvil 2; Newman club 1, 2, 3, 4; International club 1, 2.

WILBUR CHAPIN, Hamilton
Forestry; Forestry club 1, 2, 3, 4; Druids 3, 4; treasurer 4; Foresters' Ball committee 2, 3, 4; Forestry Kaimin staff 3; Forestry School Rifle club 1, 2, 3, 4; Forestry club executive board 2.

DORIS CHRISTIAN, Butte
Foreign Languages; Quadrons.

LESLIE CHRISTIANSEN, Boulder
Business Administration.

DANIEL CLAPP, Missoula
Chemistry; Sigma Chi.

BERTHA CONE, Great Falls
Physical Education; Varsity Vodvil 2, 3; Quadrons.

BOB COONEY, Canyon Ferry
Forestry; Sigma Alpha Epsilon; Silent Sentinel; Forestry club 1, 2, 3, 4; Druids 2, 3, 4; president 3; Forestry club rifle team 1; Foresters' Ball committee 2, 3, 4; swimming team 1, 2, 3, 4; captain 3; Central board 4; Senior reception committee.

ELDON CREIGHTON COUEY, Missoula
Chemistry; Phi Lambda; band 1, 2, 3, 4; Symphony orchestra 1, 2, 3, 4; International club orchestra 1, 2; Purple Towers music.

ELBERT GORTON COVINGTON, Park City
Journalism; Sigma Delta Chi 3, 4; Press club 4; track 3, 4; Independent organization 3, 4; intercollegiate basketball 3, 4.

ANNA MAE CROUSE, Bozeman
Music; transfer from New England Conservatory of Music 4; glee club 4, 5; Hi-Jinx 5; Quadrons.

ALEX CUNNINGHAM, Helena
Business Administration; Sigma Chi.





IRENE CUNNINGHAM, Missoula
Economics; Alpha Phi.



ROBERT WILLIAM CURDY, Livingston
Pharmacy; Delta Sigma Lambda; Kappa Psi; Pharmacy club 1, 2, 3; Pilgrims' club; Intramural baseball 1, 2, 3.



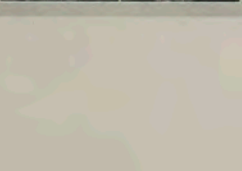
LOWELL R. DAILEY, Scobey
Chemistry; Delta Sigma Lambda; Varsity Vodvil 2; Traditions committee 2; Hi-Jinx 2; honorary Bear Paw 2; rifle champion 2; glee club 2; football 1, 2, 3, 4; M club 3, 4; secretary 4; Interfraternity council 4.



MARION DAVIS, Missoula
Physical Education; Alpha Chi Omega; Hi-Jinx 1; Varsity Vodvil 1; Pan-Hellenic council 4; vice president, Delta Psi Kappa 4; vice president, Quadrans 4.



STANLEY R. DAVISON, East Helena
History; R. O. T. C. Rifle team 1; Spanish club 1.



HAROLD G. DEAN, Plains
Law; Sigma Alpha Epsilon; Hi-Jinx 3; Law School association 3, 4, 5; Interfraternity council 3, 4, 5; minor sports manager 4; M club 4, 5.



WILLIAM E. DEENEY, Butte
Business Administration; Phi Delta Theta; Bear Paw 2; vice president South hall club 1.



AMOS DENNY, Missoula
Botany; Wesley club 1, 2, 3, 4; vice president 2; University Christian Union 3; Phi Sigma 3, 4; treasurer 4.



RUTH DIX, Missoula
English.



RHEA VIRGINIA DOBNER, Missoula
Home Economics; May Fete 1, 2; Hi-Jinx 4; Varsity Vodvil 2, 3; Home Economics club; Newman club; Glee club 2, 3, 4.



ALICE DOULL, Butte
Pharmacy.

ANTHONY A. D'ORAZI, Missoula
Fine Arts; Independent council representative 3, 4; Press club 4; basketball 1; Hi-Jinx 3; Sentinel cartoonist 1, 2, 3; Frontier artist 2; French club 2.

RAYMOND ORVAL DREIBACH,
Kelley
Business Administration; transfer from Intermountain Union college 2; Alpha Kappa Psi pledge; Wesley club 2, 3, 4; Mathematics club 2, 3; Fellowship group 2, 3, 4; vice president 3; president 4.

ELEANOR DYER, Sheridan
English; Kappa Alpha Theta.

VIRGINIA ELDRIDGE, Victor
English; Spanish club 2; Varsity Vodvil 2; Quadrons 4.

FLORENTINE MAE ENO, Butte
Home Economics; Kappa Delta; Home Economics club 3, 4; German club 4; Quadrons 4.

KARI WILLIAM ERICKSON, Anaconda
Business Administration; Sigma Phi Epsilon; Kappa Kappa Psi; orchestra 1; band 1, 2, 3; Spanish club 1, 2.

ELMI MARIE ERKKILA, Milltown
Foreign Language; transferred from Montana State college 2; French club 4; Spanish club 4.

RAY A. FARMER, Missoula
Business Administration; Alpha Kappa Psi.

ALFRED A. FLINT, Phillipsburg
Forestry; Sigma Alpha Epsilon; Druids; track 1, 2, 3, 4; M club 2, 3, 4.





EUGENE WILLIAM FOBES, Eagle
Rock, Calif.

Forestry; transferred from Pasadena college 2; Forestry club 2, 3, 4; vice president 4; Phi Sigma 4; Druids 4; Forestry rifle team 3, 4; Foresters' Ball committee 3, 4.



MARIE FRANCIS, Springdale
Journalism; Theta Sigma Phi; editor, Montana High School Editor.

IDA MARIE FREDRICKSON, Butte
Pharmacy; Kappa Epsilon; president 2, 3; vice president and historian 4; Corbin hall club secretary 1; Pharmacy club secretary 2; Spanish club 4; swimming team 1, 2.



CHARLES GAUGHAN, Missoula
Business Administration; Sigma Phi Epsilon; track; Bear Paw; Silent Sentinel; Interfraternity council 3, 4; Interscholastic committee 2, 3, 4; Alpha Kappa Psi 3, 4; Spanish club; chairman, Senior Garb committee.

BONITA LOUISE GEIS, Missoula
Foreign Language; Spanish club 1, 2, 3, 4; German club 4; Quadrons 4.



RUTH GILLESPIE, Grass Range
English; Alpha Phi; W. A. A. 2; Pan-Hellenic board 2; swimming team 2; track team 2; Press club 1; Mortar Board; Quadrons 4.

FRED GRIFFIN, Kallispell
Pharmacy; Pharmacy club 1, 2, 3; track 2, 3.



MARGARET M. GRIFFING, Billings
Music.

WILLIAM F. GUNTERMANN, Santa Barbara, Calif.
Forestry; Forestry club 1, 2, 3, 4; Forestry club rifle team 1, 3, 4; International club 1, 2, 3; president 3; Glee club 2; Druids 3, 4.



NANCY J. HAMMATT, Missoula
Economics; Alpha Chi Omega; transfer
from the University of California; Quad-
rons.

WALLACE HANNAH, Big Timber
History; R. O. T. C. officer.

DOROTHY MARIE HANNIFIN, Butte
Law; Alpha Phi; transferred from Reed
college 3; Law School association 3, 4, 5;
vice president 4, 5; Newman club 3, 4, 5;
North hall leader 4; Quadrons 4, 5; A.
W. S. board 4.

HELMER NELSON HANSEN, Missoula
Chemistry; Phi Lambda 2, 3, 4; treasur-
er 4.

EVANS HAWES, New Bedford, Mass.
Forestry; Forestry club 1, 2, 3, 4; Druids;
Forestry Kalmi staff.

GERTRUDE HAWKS, Great Falls
Sociology; Alpha Phi; Masquers 3, 4; Hi-
Jinx assistant director 4; May Fete man-
ager 4; Varsity Vodyll 1, 2, 3; May Fete
3; French club 3; Quadrons.

PAULINE HAYNE, Ponemah, Minn.
English.

MARY A. HEGLAND, Great Falls
Fine Arts; Alpha Xi Delta; baseball 1;
May Fete 1; W. A. A. 1, 2; Art league 1,
2, 3, 4; Tanager 2; Spur 4; A. W. S. 2; Pan-
Hellenic 2, 3, 4; president 4; Junior Prom
committee 3; Co-ed Prom committee 3;
Co-ed Formal committee 2, 4; class secre-
tary 4; Senior announcement committee;
Home Economics club 1, 2, 3, 4; Quad-
rons.

CLIFTON HEMGREN, Missoula
Business Administration; Sigma Chi;
Masquers; president 4.

THOMAS LEE HONNOLD, Kalspell
Pharmacy; Phi Sigma Kappa; Pharmacy
club; Kappa Psi.





VERNON B. HOVEN, Antelope
Law; Sigma Alpha Epsilon; band 1, 2; manager 3, 4, 5; Bear Paw 2; Kappa Kappa Psi; Law School association 2, 4, 5; Law School Honor committee 5; Varsity Vodyl 2; Hi-Jinx 3; State University players 1.

CATHARINE MAY HURST, Great Falls
French; W. A. A. 1, 2; Wesley club 1, 2, 3, 4; treasurer 4; Fellowship group 3, 4; Cercle Francais 3, 4.



WILLIAM H. IBENTHAL, Middleton, Wis.
Forestry; Forestry club 1, 2, 3, 4; president 3; Druids 3, 4; Foresters' Ball committee 2, 3, 4.

FLORENCE L. JARUSSI, Red Lodge
Pharmacy; Kappa Epsilon 1, 2, 3, 4; vice president 2 and president 4; Newman club; Pharmacy club 1, 2, 3, 4; Spanish club 3, 4; International club 1, 2, 3, 4.



GLEN P. JOHANNES, Ballantine
Economics; Kappa Sigma; Varsity Vodyl 4.

CATHERINE JOHNSON, Mullan, Idaho
Economics; Varsity Vodyl 2, 3; Purple Towers 3.



HELEN JOHNSON, Missoula
Foreign Languages.

MARGARET JOHNSON, Perma
Education; transferred from Montana State Normal college 3; Spanish club 4.



RUTH J. JONES, Dodson
Physical Education; Kappa Delta; W. A. A. board 4; treasurer of Delta Psi Kappa 3, 4; A. W. S. representative 3, 4; Pep committee; Glee club 1, 2, 3, 4; Corbin hall dance committee 1; Quadrons.

ELEANOR MILDRED KAATZ, Shelby
Economics; Zeta Chi; Psi Chi; University Christian Union council 3, 4; Varsity Vodyl 1; May Fete 1; Pan-Hellenic council 3, 4; Student Fellowship group 3; Co-ed Formal committee 4; German club 4.



IDELLA KENNEDY, Ekalaka
Journalism; Theta Sigma Phi, treasurer
4; Press club 1, 2, 3, 4; executive council
4; French club 2; Psi Chi 2; Sentinel
staff 4; Kaimin staff 3, associate editor 4.

OLIVER KINONEN, Milltown
Business Administration; Alpha Kappa
Psi.

CORNELIA KLITCKE, Havre
English.

PHYLLIS KREYCIK, Missoula
Pharmacy; Pharmacy club.

ANNA M. LARSON, Missoula
English; Art league; Seven Arts club;
Collegiana staff 4; Quadrons.

FREDA LARSON, Missoula
Home Economics.

HAZEL A. LARSON, Helena
Home Economics; Sigma Kappa; A. W.
S. board 2, 3; Pan-Hellenic council 2, 3, 4;
Co-ed Formal committee 3, 4; Hi-Jinx 1,
3; Varsity Vodvil 1, 3; Home Economics
club 2, 3, 4; secretary-treasurer 3; French
club; Quadrons.

STANFORD H. LARSON, Missoula
Forestry; Forestry club 1, 2, 3, 4; For-
esters' Ball committee 2, 3, 4; swimming
1, 2, 3; Druids 3, 4; president 4; Phi
Sigma 3, 4.

MARGARET JOSEPHINE LEASE,
Great Falls
Biology; Wesley club 1, 2, 3, 4; treasurer
2; president 4; Fellowship club 3, 4; W.
A. A. 1, 2; Corbin hall proctor 3; Phi
Sigma; Quadrons.

MARGARET JACOBS LENON; Helena
Botany; Kappa Alpha Theta.





ELEANOR LENNES; Missoula
Biology; Delta Gamma.

GLENN O. LOCKWOOD, Missoula
Spanish; Phi Delta Theta; basketball 1,
2, 3, 4; captain 4; track 1, 2, 3, 4; Span-
ish club treasurer 2; president 3; French
club 4; Silent Sentinel 4; class president
4; M club 2, 3, 4; Montana trophy win-
ner 3.



EVERETT E. LOGAN, Deer Lodge
Business Administration; Delta Sigma
Lambda; basketball 1, 2, 3, 4; Bear Paw
2; Mathematics club; Central board 3, 4.

FRANKLIN A. LONG, Eureka
Chemistry; Kappa Sigma; Kappa Tau 3,
4; Mathematics club 2, 3, 4; Phi Lambda
2, 3; Pi Mu Epsilon 3; president 4; Mas-
quers 2, 3, 4; Hi-Jinx stage manager 2;
Varsity Vodvil stage manager 4.



ERVA LOVE, Missoula
Home Economics; Zeta Chi; Sigma Alpha
Iota; May Fete 2; Hi-Jinx 3; Home Eco-
nomics club; Glee club 1, 2, 3; Choral
society 2.

IVER LOVE, Rudyard
Forestry; Forestry Club; Druids.



ALEXANDER McBRIDE, Bearcreek
Chemistry.

FREDA McCAIG, Great Falls
Journalism; Theta Sigma Phi, treasurer
3; president 4; Mortar Board; Kaimin
columnist; Varsity Vodvil 1, 2; Press
club 1, 2, 3, 4; Quadrans.



FRANK McCARTHY, Anaconda
Physical Education; Sigma Chi; football
1, 2, 3, 4; M club; president 4.

IRENE McCLELLAND, Williams
History; Zeta Chi; Quadrans.



VIRGINIA McGLUMPHY, Sumatra
Business Administration; Alpha Phi;
basketball 2; Commerce club 2, 3, 4;
Spanish club 1, 2; May Fete 3; Quadrons.

JEANETTE McGRADE, Butte
English; Kappa Alpha Theta; Masquers;
Hi-Jinx; Varsity Vodvil.

JOHN McKAY, Noxon
Economics and Sociology; football 1, 2,
3, 4; M club 4; M club heavyweight boxing
champion 2, 3; Spanish club 1, 2;
Masquers 1, 2; R. O. T. C. rifle team 1.

FELICIA McLEMORE, Helena
Journalism; Sigma Kappa; Theta Sigma
Phi; Mathematics club 1, 2; Press club
1, 2, 3; May Fete 1; Varsity Vodvil 1, 2,
3; Hi-Jinx 2, swimming 2; all-star track
1; W. A. A. 1.

DORRIS V. McMILLAN, Big Sandy
Business Administration; Sigma Kappa;
Corbin hall treasurer; Commerce club 2,
4; president 1; A. W. S. board 3, 4;
French club; Hi-Jinx 1; Varsity Vodvil
1, 3; Quadrons.

BETH MANIS, Hamilton
Home Economics; Alpha Phi; Tanan 2;
Home Economics club 1, 2, 3, 4; vice
president 3; president 4; Co-ed Formal
business manager 3; A. W. S. social
service chairman 3; Quadrons 4.

RADCLIFFE S. MAXEY, Missoula
Journalism; Phi Sigma Kappa; Sigma
Delta Chi; Masquers.

GEORGIA MAE METLEN, Dillon
English; Varsity Vodvil 1, 2, 3; Hi-Jinx
2, 4; Purple Towers 2; May Fete 2, 3;
Masquers; debate 2; North hall leader 4;
Independent Council 3, 4; A. W. S. board
4; Senior Garb committee; Quadrons.

RUSSELL MEYER, Neenah, Wis.
Law.

THOMAS EUGENE MOONEY, Missoula
Journalism; Press club 1, 2, 3, 4; asso-
ciate editor of Kaimin 3; editor 4; Sen-
tinel staff 3; associate editor 4; Silent
Sentinel 4; Newman club 3, 4; Sigma
Delta Chi 2; president 4; Publications
board 4; Independent council 4; Central
board 4; Student Union building com-
mittee 4.





NANCY MORRIS, Havre
English; Alpha Phi.

MARY ALICE MURPHY, Butte
Mathematics; Kappa Alpha Theta.



HARRIET L. NELSON, Sidney
Business Administration; Kappa Kappa
Gamma; transferred from St. Catherine's
college 3; Commerce club vice president;
Co-ed Prom committee; Quadrons.

RAMONA NOLL, Missoula
Music; Kappa Delta; Sigma Alpha Iota;
treasurer 4; Psi Chi; vice president 2;
Music club 1, 2, 3, 4; vice president 3;
Glee club 1, 2, 3, 4; May Fete 1, 2, 3;
Hi-Jinx 3, 4; Quadrons 4.



ELIZABETH A. NOSSELL, Anaconda
English; Kappa Alpha Theta.

JAMES D. NUTTER, Helena
Journalism; Alpha Tau Omega; Press
club 1, 2, 3, 4; Kaimin associate editor 4;
Sentinel staff 4; Sigma Delta Chi.



JOHN T. O'BRIEN, Butte
Psychology; Sigma Chi; Psi Chi; South
hall manager 4.

ADELAIDE OLINGER, Great Falls
Physical Education; Delta Delta Delta;
hockey 1; basketball 1, 2, 3, 4; volley ball
4; Hi-Jinx 1, 3; May Fete 1; Junior Garb
committee 3; Delta Psi Kappa; W. A. A.;
Tamm 2; Junior Prom committee 3;
Quadrons.



CHARLES H. O'NEIL, Pomona, Calif.
Forestry; Sigma Alpha Epsilon; Druids;
track 1, 2, 3, 4; swimming 1, 3, 4; For-
esters' Ball committee 3, 4; Senior Re-
ception committee.

ROBERT M. PATERSON, Conrad
Business Administration; Sigma Nu;
Alpha Kappa Psi; Kappa Kappa Psi;
French club 1, 2; track 1; band 2, 3, 4.



JULIA PATTEN, Columbus
 History; Delta Delta Delta; Hi-Jinx 1, 4;
 A. W. S. vice president 4; Pan-Hellenic
 vice president 4; Mortar Board; Spanish
 club; Quadrons 4.

DOROTHY SKEELS PETAJA, Missoula
 Mathematics; Zeta Chi; Mathematics
 club; Co-ed Prom committee 2; Hi-Jinx
 2; Quadrons.

WILLIAM E. PINKNEY, Missoula
 Business Administration; Phi Sigma
 Kappa.

ELLA POLLANGER, Corvallis
 Home Economics; Alpha Phi; Hi-Jinx 1,
 3; Music club 1, 2; Tanan 2; Home Eco-
 nomics club 1, 2, 3, 4; A. W. S. board 2;
 secretary 3; president 4; Calendar com-
 mittee 4; Student Union Building com-
 mittee 4; Mortar Board; Quadrons.

JAMES W. PRICE, Dell
 Business Administration; Kappa Sigma.

HELEN PUTNEY, Missoula
 History; Alpha Phi; May Fete 1; basket-
 ball 1; Hi-Jinx 1; Spanish club 4; French
 club 2, 4; Varsity Vodvil 2; Quadrons 4.

HELEN RAINVILLE, Crosby, N. D.
 Journalism; Gamma Phi Beta; North
 Dakota Agricultural college 2, 3; swim-
 ming team at State University 1; Press
 club 1, 4; Theta Sigma Phi 4.

**MARGARET ANN RANDALL, Wolf
 Point**
 Physical Education; W. A. A. president
 4; Women's M club 3, 4; Delta Psi
 Kappa; Quadrons.

UNA RANDALL, Wolf Point
 Physical Education; Delta Psi Kappa,
 secretary 4; W. A. A. secretary 4; Wom-
 en's M club 3, 4; secretary 3; Independent
 council 4; Quadrons.

JOHN ROMERSA, Red Lodge
 Pharmacy; Kappa Sigma; Kappa Psi;
 Pharmacy club.





PATRICIA REGAN, Missoula

Journalism; Kappa Alpha Theta; Theta Sigma Phi; secretary 4; Mortar Board 4; Press club 1, 2, 3, 4; French club 2; Newman club 1, 2, 3, 4; Kaimin staff 3; associate editor 4; Reunion publicity committee 4; Big Sister chairman 4; Sentinel staff; A. W. S. board 4; Co-ed Formal publicity 3, 4; Quadrons.

EVELYN RIMEL, Missoula

Foreign Language; W. A. A. 1; Wesley club 1, 2, 3, 4; secretary 2; Quadrons 4.



GARRY E. ROBERTSON, Red Lodge

Education; Sigma Alpha Epsilon.

BILL ROHLFFS, Sioux Falls, S. D.

Journalism; Phi Delta Theta; basketball 1, 2, 3, 4; captain 4; M club 2, 3, 4; Hi-Jinx 2; Press club 1, 2, 3, 4; captain, Grizzly battalion 4; South hall proctor 4; assistant manager 5; Aber Day manager 4; Silent Sentinel.



MARY ROSE, Brady

Mathematics; W. A. A.; hockey 2; baseball 2; basketball 1, 2, 3; Mathematics club; French club 2; Pi Mu Epsilon; Quadrons.

TOM ROWE, Missoula

Pharmacy; Sigma Chi; transferred from University of Michigan 3; football 3; tennis 4.



JOHN F. SASEK, Heron

Education; transferred from Oregon State college 4; Glee club 4; Spanish club 4.

WILMA E. SCHUBERT, Great Falls

History; Hi-Jinx 1, 2, 3, 4; Varsity Vodvil 1, 2, 3; May Fete 1, 2, 3; Corbin hall proctor 2; Sophomore Dance committee 2; Purple Towers 3; Co-ed Prom committee 2; Glee club 1, 2, 3, 4; Independent council 3, 4; Senior Garb committee 4; Quadrons 4.



MARGARET MARY SEATON, Cascade

Biology; Sigma Kappa; transferred from North Dakota State college 3; German club; Varsity Vodvil 3; Hi-Jinx 3; A. W. S. board 4; Biology club; Co-ed Prom committee 4; Quadrons 4.

ROSE JOSEPHINE SEEWALD, Kevin

Home Economics; hockey team captain 1; all-star hockey 1; Student Fellowship group secretary 3; Home Economics club, secretary-treasurer 4; Quadrons 4.

MARTHA SHERMAN, Hamilton
 English; Alpha Chi Omega; debate 1;
 Varsity Vodvil 1; Glee club 1, 2, 3; Psi
 Chi secretary 3, vice president 4; May
 Pete 3; A. W. S. representative 3; Co-ed
 From committee 4; Senior Women's Gorb
 committee 4; Quadrons.

JOHN F. SHIELDS, Butte
 Forestry; Delta Sigma Lambda; Forestry
 club 1, 2, 3, 4; president 4; Druids 3, 4;
 secretary 4; Phi Sigma; Forestry School
 Rifle club 1, 2, 3, 4.

DAVID PETER SILVA, Honolulu, T. H.
 Education; Sigma Nu.

JOSE T. SIMANGAN, Tuguegarao, Cag.,
 P. I.
 Botany; International club 1, 2, 3, 4;
 president 3; treasurer 2, 4; Filipino club
 vice president 4; secretary-treasurer 2, 3;
 Fellowship club 1, 2, 3, 4; Wesley club
 treasurer 3; Spanish club 1; Glee club 2;
 band 3, 4.

HENRY D. SIMMONS, Butte
 Physics; Delta Sigma Lambda.

HUBERT A. SIMMONS, JR., Red Lodge
 English and Economics; Delta Sigma
 Lambda; Interfraternity council 3, 4;
 secretary-treasurer 4; Varsity Vodvil 1,
 2; Inter-Church council 2, 3; president 4;
 Kappa Tau.

BERKLEY SMITH, Missoula
 Business Administration; Kappa Sigma.

ROSE MARY SOUTHWORTH, Bozeman
 Latin; Kappa Tau; Quadrons.

ALFRED E. SPAULDING, Missoula
 Forestry; Sigma Phi Epsilon; Silent
 Sentinel 4; Phi Sigma 3, 4; Druids 3; vice
 president 4; Forestry club 1, 2, 3, 4; For-
 esters' Ball committee 2, 3; Chief Push 4;
 track 2, 3, 4; M club 2, 3, 4; Forestry
 Kaimin staff 3.

FREDERICK J. STEINER, Clyde Park
 Journalism; Sigma Delta Chi; Press club
 1, 2, 3, 4; Kaimin sports editor 4; Sent-
 inel sports editor 3, 4.





LOISJANE STEPHENSON, Missoula
Foreign Language; Alpha Phi; Sigma
Alpha Iota; secretary 3; president 4;
Music club; secretary 3; Co-ed Formal
committee 3; Hi-Jinx 1; French club 3,
4; Spanish club 4; May Fete 1, 2; Pan-
Hellenic council 3, 4; Glee club 3, 4;
Quadrans.

NAOMI J. STERNHEIM, Butte
Foreign Language; transferred from Reed
college 3; Seven Arts club 3; German
club 4; Cercle du Chevalier de la Ver-
dreye 3, 4, president; Quadrans 4.



LEAH MORRIS STEWART, Helena
Journalism; Kappa Kappa Gamma; Theta
Sigma Phi; Hi-Jinx 1, 3; Kaimin staff
3, 4; society editor 4; Press club 1, 2, 3, 4;
Quadrans 4.

WARREN H. STILLINGS, Missoula
Forestry; Phi Sigma Kappa; Forestry
club 1, 2, 3, 4; Rifle club 2, 3, 4; Druids
3, 4; Phi Sigma 3, 4; Foresters' Ball com-
mittee 3, 4.



REX ST. JOHN, Stevensville
Business Administration; Sigma Nu;
Alpha Kappa Psi; treasurer 4; A. S. U.
M. Store board 4.

CLAIRE STOWE, Missoula
Education; Sigma Kappa.



GEORGIA STRIPP, Billings
Biology; Kappa Alpha Theta; North hall
club, president 1; proctor 2; Tanan 2;
tennis 1; chairman of women's activities
4; class vice president 1; Mortar Board 4;
Quadrans.

EUGENE SUNDERLIN, Spokane, Wash.
Chemistry and Mathematics; Sigma
Alpha Epsilon; Silent Sentinel; Kappa
Tau; Pi Mu Epsilon; Bear Paw 2; Tra-
ditions committee; debate; tennis;
Wrangler staff.



W. EVERETT SULLIVAN, East Helena
Mathematics; Newman club; Mathemat-
ics club; Spanish club.

STEWART J. THOMAS, Missoula
Business Administration; Delta Sigma
Lambda.



DOROTHY TUPPER, Missoula
 Fine Arts; Art League president 3, 4;
 May Fete 2; Hi-Jinx 3; riflery 1; Home
 Economics club 3, 4; Quadrons 4.

FRANCES ULLMAN, Big Timber
 Pharmacy; Alpha Chi Omega; Pan-Hel-
 lenic council 1, 2, 3; A. W. S. secretary
 2, 3; Hi-Jinx 3; Tanan 2; Kappa Epsilon;
 Pharmacy club 1, 2, 3; Co-ed Prom com-
 mittee chairman 3.

VICTOR VADHEIM, Great Falls
 Business Administration.

IRENE VADNAIS, Donnybrook, N. D.
 Journalism; French club 1, 2; Newman
 club 1, 2, 3, 4; Press club 1, 2, 3, 4; Var-
 sity Vodvil 1; associate editor of Kaimin
 3, 4; Theta Sigma Phi vice president 3, 4;
 Sentinel staff 4.

HERBERT VERHEEK, Missoula
 Business Administration; Sigma Nu;
 assistant business manager the Sentinel
 3; business manager 4; Interfraternity
 council 3, 4; Interfraternity Ball com-
 mittee 4; Alpha Kappa Psi president 4;
 Spanish club 3, 4.

HAROLD R. VOIGHT, Manhattan
 Pharmacy; Pharmacy club 1, 2, 3; Kappa
 Psi 1, 2, 3; president 3.

RAYMOND VESETH, Malta
 Biology; Delta Sigma Lambda.

VINCENCIA WELKER, Fort Benton
 Chemistry.

MARJORIE WENDT, Missoula
 Biology; Alpha Xi Delta; Phi Sigma;
 Quadrons.

THELMA WENDTE, Billings
 Biology; Alpha Chi Omega.



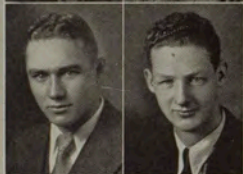


MARION WILCOX, Missoula

Biology; Delta Gamma; Varsity Vodvil 2, 3, 4; Hi-Jinx 4; Tanan 2; Spanish club; swimming team 1; track team 1, 2; May Fete 2.

THELMA WOLFE, Missoula

English; Kappa Delta; Quadrons.



ROY E. WOOD, Havre

History; Phi Sigma Kappa; yell king; Central Board.

MATTHEW WOODROW, Red Lodge

Pharmacy; Alpha Tau Omega; Pharmacy club; Kappa Psi.



MARGARET WYNN, Anaconda

Biology; Delta Delta Delta; Hi-Jinx 1, 3; May Fete 1, 2; Newman club 1, 2, 3, 4; class secretary 3; Quadron secretary 4.

ROBERT M. BATES, Missoula

Journalism; Alpha Tau Omega; Press club; Sentinel art editor 4; Sigma Delta Chi.



ALVIN JAY JACOBSEN, Plentywood

Pharmacy; Sigma Alpha Epsilon; Pharmacy club; vice president 2, 3; Kappa Psi; Grizzly band 1, 2, 3.

BETTY BROWNE, Havre

English; Kappa Kappa Gamma; May Fete 2; Hi-Jinx 2; Sentinel staff 2; Northwestern university 3; Seven Arts club 4; Quadrons 4.

ELIZABETH C. HANSEN, Superior

English; Alpha Xi Delta; transferred from Whitman college 3.





Harold Fitzgerald

Rhodes Scholar

Harold Fitzgerald of Missoula will enter Oxford university this autumn. He has a degree in Economics and Sociology and at present is a junior in the School of Law at the State University.





Stapp

JUNIOR CLASS OFFICERS

Sterling Stapp	- - - - -	President
Virginia Connolly	- - - - -	Vice President
Mitchell Sheridan	- - - - -	Secretary
Maxine Davis	- - - - -	Treasurer



Connolly



Sheridan



Davis



Junior Class Roll

Alexander, Edward; Algie, Helen; Allen, Nat; Archibald, Helen; Averill, Martha; Bandmann, Sr. Theresita; Barber, Clara; Barnett, Olive; Bateman, Franklin; Benish, James; Beuthien, Agnes; Blicknese, Adah; Billings, Harry; Blitz, Henry; Botzenhardt, August; Bravo, Emma; Bredberg, Ellen; Breen, Mary; Breen, Robert; Brown, Dudley; Browning, Joy; Busey, Elliott; Busey, Robert; Button, Paul; Callahan, Marlon; Carr, Edward; Carroll, Edward; Carroll, Kermit; Chagnon, Raymond; Chisholm, Roderick; Clinton, Grace; Coe, Margaret; Cole, Burnett; Colgrove, Roland; Colliton, Marguerite; Compton, Frederick; Connolly, Virginia; Cooney, Sarah Lou; Corette, Robert; Cosner, Frances; Coughlin, Catherine; Crane, Leonard; Creveling, Donald; Crowley, Cale; Cuffe, Marie; Culver, Newton; Cunningham, Dorcas; Curtis, John; Cushman, Dan.

Dahlberg, Alfred; Dantermann, Marjorie; Davenport, William; Davidson, Roy; Davis, Delavan; Davis, Marjorie; Davis, Martha; Deck, Margaret; Diekel, Herman; Dignan, Tom; Dobrinz, Edward; Dorsey, Mildred; Duffy, Joseph; Dugal, Mary; Duncan, Helen; Dunlap, Lola; Dunn, Kathleen; Dussault, Eddie; Ekland, Edwin; Elderkin, Dwight; Evenson, Millard; Farmer, Winnifred; Fee, Marjorie; Fitzgerald, David; Fitzpatrick, Donna; Fitzpatrick, Ted; Flanagan, Frank; Foot, Betty; Forhan, Laura; Fosdal, Arne; Foster, Leonard; Fox, Dick; Frisbie, Glenn; Gallagher, Francis; Gallup, Richard; Galusha, Ellen; Gardner, Taylor; Gates, Wright; Good, Francis; Gossweiler, Curley; Griffin, Helen; Groombridge, Margaret.

Hagerty, William; Hale, Lucy; Hall, Rufus; Hancock, Morris; Hamant, David; Harmon, Louise; Harrigan, Kathleen; Harrington, Catherine; Harrington, James; Harris, Meyer; Hart, Lovira; Hartley, June; Hauck, John; Haugen, Ruth; Heagy, Earle; Henriksen, Evelyn; Hesselschwerdt, Joseph; Hinman, Dale; Hogan, Mrs. Mary; Holgren, Robert; Horan, Lynott; Horn, Milton; Houston, John; Hubert, Helen; Huff, Russell; Huffman, Elza; Hunton, Dorothy; Jackson, Arthur; Jennings, Eileen; Jensen, Chandler; Johnson, Charles; Johnson, Harry; Jones, Edith; Jarkainen, Toivo; Kelleher, Grant; Kelllogg, Perry; Kennedy, Leland; Kennedy, Michael; Kennedy, Raymond; Kieley, Maurice; Kladschy, Doris; Kinney, Russell; Kirton, Stewart; Knudsvig, Garth; Krum, Genevieve; Kurth, Mary.

Larsen, Helen; Larson, Glenn; Lashy, Joe; Lawrence, Edward; Lehmann, Phyllis; Lehsou, Maude; Lemmon, Betty; Leslie, Robert; Lewis, Margaret; Lewon, Rubin; Limpus, Oskar; Lloyd, Glenn; Logan, Thelma; Lord, Kenneth; Lowney, John; McCarthy, Frank; McCarty, Marlon; Magnuson, Melvin; Makinen, Verna; Martin, Dorothy; Martin, Mary; Mason, Katherine; Matthews, Berton; Mattson, Harlan; Mercer, Rita; Miller, Lucille; Miller, Willard; Morrell, Fred; Murphy, Margaret; Nash, Jane; Nofsinger, Jane; Norris, George; Noyd, Fred; Ohrmann, Geraldine; Olson, Roy; Patterson, Phillip; Peterson, Russel; Phalen, Janet; Phelan, Warren; Pitt, Carl; Plantico, Kenneth; Pokorny, Emma; Pritchard, William; Provost, Ruth; Purvis, John.

Quinlin, Carter; Raltt, Margaret; Rand, William; Raquel, Marcelano; Renison, Margaret; Renshaw, Mrs. Mildred; Rich, Ieyle; Richards, Frances; Roberts, Arthur; Robinson, Bert; Robinson, John; Roffler, Hans; Ross, John; Rothenberg, Beatrice; Rotvora, Dennis; Rusk, David; Schall, Frances; Schneider, Richard; Schoenhais, Mary; Schroeder, Robert; Scott, Mary Irene; Scott, Wesley; Sheehan, John; Sheridan, Mitchell; Silfast, Oliver; Silverman, Helen; Skoug, Edward; Skulason, Ethel; Smith, Allan; Smith, Helen; Smith, Marlon; Smith, Verna; Smith, Virginia; Smoot, Thurlow; Snyder, Stanley; Soenke, Loren; Southworth, Ruth; Speer, Jim; Sprague, Mercedes; Stapp, Sterling; Stevens, Leola; Stewart, George; Stewart, Mary Isabel; Stillings, Adeline; Storey, Mary; Story, Leland; Strand, Mary; Stukey, Alice; Stussy, Cornelia; Sweetman, Sylvia.

Tange, Leonard; Taylor, Alice; Taylor, Hartley; Thibodeau, Lee; Thomas, Richard; Thykeson, Robert; Tobin, Tom; Toole, Jack; Tower, George; Trachta, Stanley; Tressman, Irma; Tucker, Alice; Ueland, Ralph; Udem, Solveig; Veeder, William; Vlassoff, William; Walker, Frances; Warden, Horace; Watson, Clarence; Watson, Russell; Wetherell, Helen; Whitaker, Richard; White, Robert; Wilson, Frank; Woody, Mary Elizabeth; Yule, Lawrence.



Krause

SOPHOMORE CLASS OFFICERS

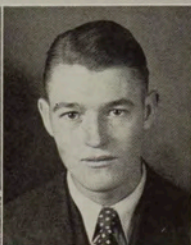
Raymond A. Krause	- - - - -	President
Jane Tucker	- - - - -	Vice President
Olive Midgett	- - - - -	Secretary
Raymond Smalley	- - - - -	Treasurer



Tucker



Midgett



Smalley



Sophomore Class Roll

Adami, Jane; Agathier, Victor; Alden, Ellen; Allen, Ernest; Allen, Horace; Andrews, Lloyd; Armour, Juanita; Arness, May; Atherstone, Helen; Bailey, Kathryn; Bainton, Jack; Balgard, Evelyn; Barry, Maurice; Bell, William; Bills, John; Blair, James; Rodine, Marjorie; Bollean, George; Bollean, Joseph; Borge, Nemesis; Boyd, James; Brekke, Marian; Broadwater, Edward; Broekway, Phyllis Mrs.; Brown, Clark; Bruckhauser, Lynda Jane; Burton, Elizabeth; Bussey, Martha; Calkins, Nessley; Carnine, Roland; Carruthers, Elizabeth; Castles, Mary; Cayon, Arthur; Clark, Robert; Clarke, Roderick; Claybough, Imogene; Coleman, Tom; Cook, Fred; Cooney, Virgilia; Coretto, Mary Taaffe; Coriell, Lewis; Corkish, Robert; Corry, Jean Siderfin Mrs.; Cosper, Alvy; Couch, Mildred; Coughill, Rhoda; Coyle, Walter; Crego, Clyde; Crossen, Cyril; Crnikshank, Margaret; Crutchfield, Mulford.

Dahlin, John; Dishow, William; Dittmeier, Florence; Dohi, Mary; Dolin, Francis; Donovan, Edwin; Dowdle, Tena; Dresskell, Wilfred; Dunann, Jeannette; Duncan, Robert; Dunn, Joseph; Eamon, Kathryn; Eastman, Harriet; Eckley, Kermit; Elder, Margaret; Eldering, Jeannette; Epstein, Esther; Erickson, William; Fager, John; Falek, John; Farmer, Elizabeth; FitzGerald, Kathlene; Flasted, Eddie; Fletcher, Estelle; Flightner, Fern; Flynn, George; Foley, George; Fox, Lehman; Francisco, Meirl; Frankel, Jerome; Franks, Laura; Frazier, Percy; Fredrickson, Eleanor; Freeman, Roland; Gates, Maxwell; Gauthier, Elder; Gilbert, Vera; Gilboe, Herlof; Glesd, Yvelia; Gomavitz, Louis; Good, Cecil; Gough, Newell; Graham, Sarah; Greene, Lina; Grierson, John; Gullickson, Howard.

Haage, Lloyd; Hair, Wilbur; Halvorson, Elon; Hanford, Marian; Harden, Louise; Harlen, Leonard; Harper, Hazel; Harrington, Florence; Harrison, Allan; Hawke, William; Hebard, Billy; Henson, William; Higgins, Raymond; Hill, Stanley; Hinman, John; Holstrom, Charles; Horsky, Flora; Horton, Doris; Hostetter, Glenn; Howard, John; Hutton, Eugene; Hurt, Lyle; Jacobson, Dora; Jefferson, Jack; Jevnager, Sylvia; Johnson, Grace; Johnson, James; Johnson, Robert; Johnson, Ruth; Jones, James; Jones, Marjorie; Jones, Myers; Jones, Robert; Karnos, Richard; Keil, Madeline; Kelleher, Betty; Kelly, Margaret; Kemp, Louise; Kerin, Marybelle; Kimball, Martha; Kimpel, Archibald; Kinonen, Kauko; Kirby, James; Knapp, Aaron; Knight, Margaret; Kohhase, Harold; Koyl, George; Krause, Raymond; Krebs, Charles; Kuka, Leonard; Kurtz, Jay.

LaFond, Russell; Lake, Richard; Lamb, Alice; Lantz, Carl; Larson, Gladys; Larson, Einar; Lash, Corby; Layfield, Robert; Lembke, Henry; Lentz, Esther; LeSage, Frank; Lesell, Eva; Lewis, Olive; Little, Corliss; Long, George; Lyman, Chalmers; McCall, Rodney; McCann, Verne; McCormick, Charles; McDaniel, Lewis; McElroy, Jean; McKay, Margaret; McLenguan, Dorothy; MacDonald, Eleanor; MacDonald, Sister Plus; Mackenzie, Allan; Malone, Francis; Malone, Marcella; Marlan, Katherine; Marlowe, Ellnor; Martha, Laura; Martinez, Jose; Mathews, Edith; Matson, Elnor; Matson, John; Mayo, Gladys; Mead, Catharine; Mendoza, John; Midgett, Olive; Miles, Sara; Miller, Dorothy; Miller, Frederick; Miller, Sherman; Mills, Emily; Mills, Phyllis; Milne, Adah; Minnehan, Margery; Moore, Sadye; Morin, Glory; Morris, Winifred; Murphy, Michael.

Nelson, H.; Nimbar, P.; Nofsinger, B.; Nordstrom, A.; Novak, S.; O'Brien, R.; Oliver, A.; Olson, R.; Olson, H.; O'Malley, R.; O'Neill, B.; Ousterbeek, B.; O'Rourke, B.; Parkinson, J.; Patterson, P.; Pearson, C.; Peterson, A.; Piquett, V.; Place, H.; Potter, C.; Prather, L.; Prendergast, R.; Rabbitt, Mrs. H.; Raalston, L.; Rauma, E.; Reddick, G.; Remington, C.; Reynolds, L.; Rhoades, R.; Reidell, R.; Rigney, V.; Rimel, R.; Ritchey, P.; Roberts, J.; Robertson, G.; Robertson, M.; Robinson, J.; Roe, J.; Rogers, D.; Rogness, R.; Roskie, G.; Rossiter, D.; Rotering, N.; Ruegamer, J.; Ruiz, L.; Rygg, M.; St. George, V.; Sanders, C.; Sauer, S.; Schell, R.; Schini, G.; Schrock, C.

Schroeder, H.; Schultz, J.; Shaw, P.; Sherick, R.; Shields, E.; Smalley, R.; Smith, E.; Smith, K.; Snyder, H.; Somerville, R.; Spafford, R.; Spencer, H.; Stadler, J.; Stansberry, R.; Staunton, R.; Stearns, H.; Steensland, L.; Steinfrenner, F.; Stephens, G.; Stephenson, A.; Sterling, S.; Stocker, W.; Stratton, S.; Sullivan, M.; Swanberg, S.; Swartz, D.; Swenson, T.; Tavener, D.; Taylor, D.; Taylor, T.; Thirloway, H.; Thomas, H.; Thompson, M.; Tibbs, H.; Tobin, J.; Tucker, J.; Tweto, O.; Tyree, A.; Ullman, F.; Vance, L.; Van Vorst, E.; VanWald, C.; Vidro, A.; Wade, W.; Wagner, E.; Wagner, J.; Walford, R.; Walker, C.; Wallace, R.; Warden, G.; Welsel, V.; Welton, E.; Wertz, M.; White, P.; White, T.; Whitham, Mrs. B.; Wickware, R.; Wilcox, G.; Wilcox, W.; Wilkins, J.; Wilkinson, M.; Wilkinson, R.; Williams, W.; Wohl, R.; Wood, A.; Woodcock, O.; Woodward, K.; Zeidler, R.



Blewett

FRESHMAN CLASS OFFICERS

Alexander Blewett	- - - - -	President
Isabelle Spitzer	- - - - -	Vice President
Ruth Polleys	- - - - -	Secretary
James G. Brown	- - - - -	Treasurer



Spitzer

Polleys

Brown



Freshman Class Roll

Aho, Aldrich, Algie, Almich, Ambrose, Amundson, L. Anderson, B. Anderson, B. Anderson, Angland, Asbury, Avery, Baffer, Bagacisan, Baker, Bakke, Baldwin, Barber, Barker, H. Barnes, O. Barnes, R. Barnes, Barnhill, Bateman, Bauer, Beargare, Beardsley, B. Bell, R. Bell, R. W. Bell, Benish, Benson, Benton, Bernhard, Bessey, Bischoff, Bjorneby, Black, Blankenship, Blaskovich, Blewett, Boe, Bohlander, Bonner, Borg, Bower, Bowman, Boyer, Breen, Brickson, Brooks, Brophy, D. Brown, G. Brown, J. C. Brown, J. G. Brown, J. Brown, S. Brown, Bufka, Burg, Butler, Button, E. Byrne, L. Byrne.

Caird, Cambrou, Cameron, A. Campbell, E. Campbell, Carnue, Carpenter, Castles, Castor, Cerise, Chapman, Charette, Christie, Christopherson, Clapp, Clark, Clarke, Clary, Cohe, Conkling, Conrad, Copping, Corr, Coughlin, Coughll, Cowperthwaite, Crawford, Crego, Crossman, Crowley, Cunniff, Currie, A. Cyr, E. Cyr, Doggett, Dahl, R. Davidson, W. Davidson, Davis, deMers, A. Deschamps, E. Deschamps, Diekel, Dodge, Doulan, Donohoe, Drost, Duff, Duffy, D. Duncan, Donald Duncan, Dwyer, Ede, Elliot, Elsethagen, Emery, Ennis, Eplin, Epperson, G. Erickson, M. Erickson, R. Erickson, Estes, A. Evans, K. Evans, Fallman, Farnsworth, Fetterly Flanagan, Fletcher, Foot, Fraser, Fredlund, Freeburg, Furlong, Gaines, Gallbreath, Garrison, Garvin, Gaskins, George, Geyer, Gilder, Gilham, Gillespie, Gilman, Girson, Gnose, Goodman, Goodwin, Gordon, Grafton, Grande, Graves, Graybeal, Griffiu, Griffith, Grosinger, Gutchell.

Hagins, Hague, Hahn, Haines, G. Hall, L. Hall, H. Hamilton, R. Hamilton, R. Ham-matt, M. Hammett, Hancock, Hansen, Hanson, Hardison, Harmon, Harper, R. Harris, W. Harris, Harter, Hartsell, Hoskins, Haugen, Hayes, Hayward, Hazelbaker, Hazelton, Head, Hebert, Heckert, Hedline, Helean, Heller, Hengren, Henningsen, Henriksen, Her-rick, Herweg, Hewitt, Hewson, Hileman, Hinnaland, Hirst, Hobbins, Hoblitt, Hoffner, Holmes, Hoover, House, Hoyce, Hoven, Howatson Huffman, Hughes, Hunt, Hoppe, Isaacson, Jacobs, Jefferson, Jeffrey, Jensen, M. A. Johnson, M. J. Johnson, M. Johnson, Johnston, F. Jones, R. Jones, Juel, Junod, Kantz, Karsted, Keach, Kedman, Keith, Kelleher, A. Kenfield, O. Kenfield, Kerns, King, Kingsbury, Klune, Kirley, B. Kitt, M. Kitt, Kliemann, Kniffen, Knight, Knoble, Kusher.

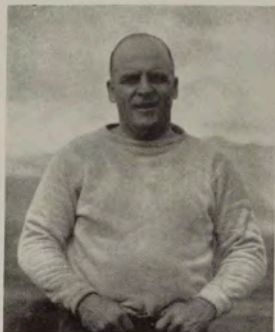
A. LaCasse, D. LaCasse, M. LaCasse, Lacklen, Lake, Lambert, Lancey, Landall, Langdale, Lanzendorfer, LaPorte, B. Larson, R. Larson, Lash, Lauder, Lewellen, Lew-ellyn, Lien, Lindborg, Link, E. Little, J. Little, Long, Lousen, Lowe, McCormick, McDon-ald, McDowell, McKenzie, McKittrick, McLanahan, McLaughlin, McNeill, McPhail, Mc-Queen, Madsen, Mahoney, Mallon, Malone, Manis, Manley, Mureyes, Marrs, Marshall, Martin, Mathews, Maughan, Maury, Meeker, Messmer, Metcalf, Miles, H. Miller, P. Miller, V. Miller, Mills, Mix, Montgomery, Moordale, Moore, Morrell, Morrison, Moulton, Murphy, Myers, Nelson, Nooney, Nordstrom, Noren, B. O'Brien, J. O'Brien, Odden, O'Tell, O'Donnell, Oech, Ogg, O'Laughlin, O'Leary, O'Rourke, Palin, Patterson, Peden, Pedersen, Peete, Periman, Perry, Peschel, Petersen, Pettus, Pew, Phillips, E. Piercy, M. Piercy, Pilling, Pohlad, Pollard, Polleys, Pöllinger, Powers, Prentice, Proctor, Proost.

Quanstrom, Quinlan, Raff, Ramer, Rand, Rea, Reardon, Rhinehart, Rhude, Richard-son, Robbins, Roberts, H. Robinson, J. Robinson, Rochester, Roe, Rohel, Root, Russell, Rutherford, St. Sure, Sample, Sannan, Sayatovich, Saylor, Schaaf, Scheffer, Schlicher, Schmall, Schnell, Scribner, Sell, Seymour, Shadoan, Shaffer, Shaver, Shaw, Shea, Shel-lenbarger, Sheridan, Simangan, Simons, Skarie, Skordal, Slusher, Charlotte Smith, C. Smith, D. Smith, F. Smith, G. Smith, J. Smith, P. Smith, R. Smith, Soliven, Spafford, Sparrow, A. Spaulding, K. Spaulding, Specker, Spitzer, Sprout, Spurlock, Squires, Steele, C. Stein, E. Stein, Steinitz, Stempke, Stevens, Stevenson, Stotts, Stoverud, Strand, Strauss, Strodebeck, Stroup, Sullivan, Swango, Swanson, Tait, Tamplin, Tangen, C. Taylor, N. Taylor, O. Taylor, R. Taylor, Tregarden, Teters, Thibodeau, Thomson, Tilzey, Towle, Traxler, Treckell, Tubbs, Turley, Udem, Vaenra, VanDensen, Veleber, Vesel, Wagner, Waite, Walker, Walkley, Warden, Watkins, Watland, Wayne, Welch, Wells, Welton, Wemple, Werner, West, White, Whitesitt, Whittlughill, Willburn, A. Wilcox, V. Wilcox, Wildschut, Wilkins, Wilson, Wood, W. Woods, Wm. Woods, Worden, Wren, Yllinen, Yonlden, Young, Zadra, Zehntner.

ATHLETICS



M



Oakes



Stewart

Coaching Staff

Bernard F. Oakes, formerly of Nebraska and a graduate of the University of Illinois, is completing his first year here as head football coach.

Director of Athletics J. W. Stewart this year resigned from his duties after ten years' service.

Harry Adams is the head of intramural sports and Adolph Lewandowski, who came to Montana with Coach Oakes, has charge of freshman football and basketball. Ted Rule and Ted Mellinger were assistant football coaches.



Adams

Lewandowski

Oakes

Stewart





Hendon



Mumm



Burke

Athletic Board

Campus athletic activities are guided by the Athletic board, composed of Bob Hendon, president of the A. S. U. M. and chairman; Marjorie Mumm, secretary of the A. S. U. M., secretary; Roy Wood, yell king; J. W. Stewart, director of athletics; E. K. Badgley, student auditor, and Oakley Coffee, representing the alumni.

The duties of the board are to regulate and supervise athletic programs and keep them in harmony with the policy of the institution. They recommend candidates for athletic managers, pass final decision on athletic awards, ratify schedules and control the expenditures on State University sports.



Stewart



Coffee



Badgley





Badgley

Randall

Woolfolk

Minor Sports Board

Minor sports, adopted as a part of the regular State University athletic program in the fall of 1928, attracted increased attention this spring with the revival of interfraternity sports competition after nine years of smouldering in the ashes of discontent and disagreement. Harry Adams, director of intramural athletics for men, controls interfraternity athletics, which include baseball, tennis, golf and horseshoes.

The minor sports program of the State University includes boxing, wrestling, swimming, fencing, tennis and golf. Eligibility standards are the same as those of major sports.



Adams

Wood

Hendon



FOOTBALL





Varsity Football Team

Handicapped during the first season by newness here and not having had previous experience with the men, Bernard F. Oakes, varsity coach, completed his first year at the State University of Montana. The season was rather discouraging so far as the game scores were concerned but the squad soon gained a reputation as a hard, scrapping, fighting team.

The three high spots in the football season were: The Idaho game, with Montana's phenomenal rally in the last period; the Washington game, when Montana held the superior western team to a 13 to 0 score, and the following Saturday when it beat and trampled the Montana State players by a score of 37 to 6.



Holmberg
Varsity Manager

The State University team underwent a practice in the spring of 1932 and many likely prospects were uncovered for the fall season. With the return of lettermen and men with experience next fall, Montana can look forward to a real football season. Frank Holmberg of Anaconda was varsity manager during the season.



Action during the St. Charles game.

Montana-St. Charles Game

Outweighed, pushed about by a lethargic Grizzly, Mount St. Charles held onto a two-point lead gained the first quarter to defeat the State University for the first time in history, 2-0.

After a bad pass from center, Fox, Montana, attempted to run the ball out but was smashed by Donich, Saint tackle, for a safety.

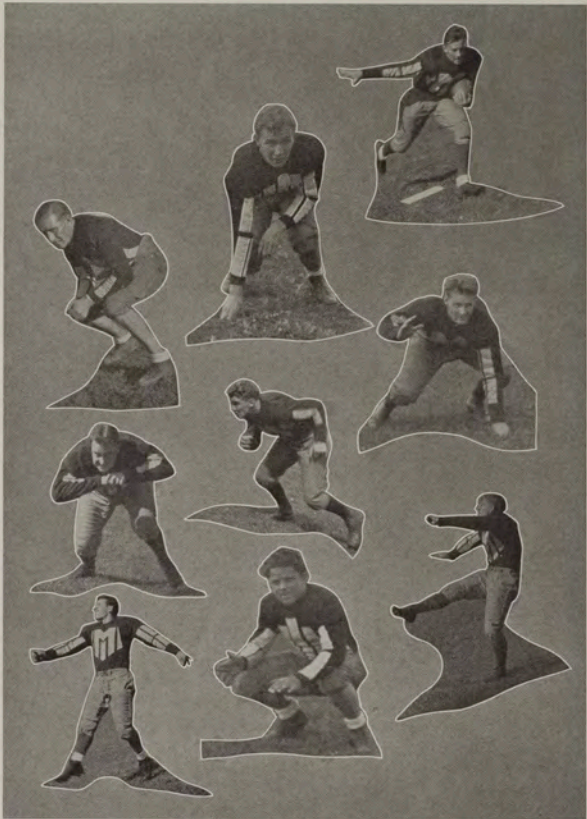
During the second half, the alarmed Grizzlies opened an air attack but watchful Saints batted the ball down. Only one of 18 passes was completed during the barrage.

The defeat wiped out the Grizzlies' chance for a state football title, the Hilltoppers later defeating Montana State College.



Jerry Ryan,
Game Captain





Babeck
 Botzenhardt
 Caven

Bills
 Breen
 Cooney

Boone
 Brown
 Cox





Stopped at Washington

Montana-Washington Game



"Hank" Murray,
Game Captain

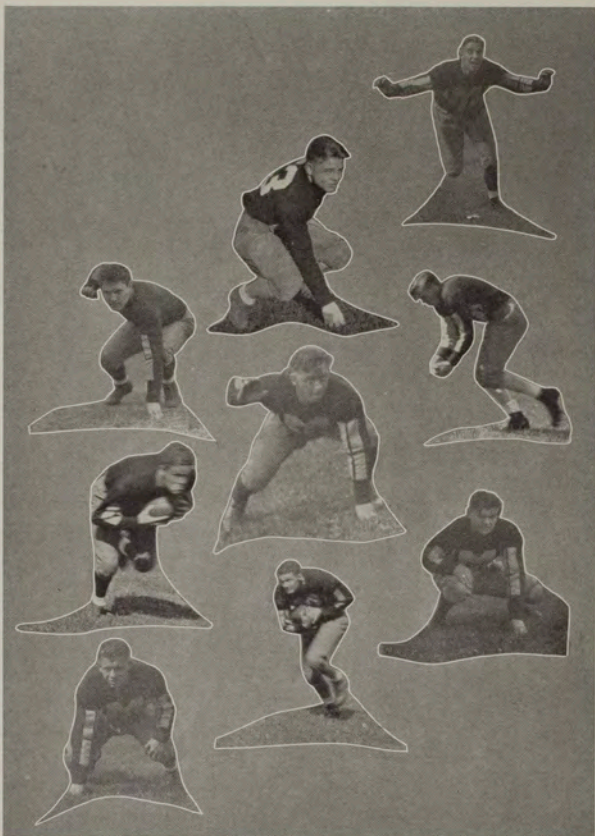
Not yet at the season's height of playing form, the Grizzlies were battered down by Washington Huskies in the second game of the year, 25-0. Bledsoe, Hufford, Wolcott and Franklin each scored a touchdown in the game.

Montana made two threats, the first in the opening quarter and the other in the final minutes of play. On both occasions the Grizzlies rammed and passed their way to the Huskies' 8-yard line but could penetrate no farther.

Crowley, Meeker, Fox and Dailey were outstanding for Montana, while the ends and tackles showed great improvement over the week before.

In statistics, Washington outclassed Montana in every way.





Cosper
Dailey
Hawke

Crowley
Evenson
Hinman

Dahlberg
Fox
Hunton





Dalley Hits the Line in the Idaho Game

Montana-Idaho Game

Rampant Grizzlies, starting slowly, tore the Vandal line to shreds, scored three successive touchdowns in the last 12 minutes of play but were cut short of victory, 21-19.

Montana lost a probable touchdown in the first quarter when Caven, halfback, fumbled as he crossed the goal line.

In the last quarter, the Grizzlies shoved Hinman across the line for the first score. A little while later Caven sifted through for nine yards and a second touchdown. Caven missed both kicks.

A drive from the 44-yard line netted another tally and Fox kicked goal.



Lowell Dalley,
Game Captain





Kuka
McCall
Mackenzie

LeRoux
McCarthy
Murray

Lyman
McKay
Meeker





Caven Skirts the W. S. C. End

Montana-W. S. C. Game

Two sudden drives by a desperate Cougar in the fourth quarter broke up a hard-fought football game on Dornblaser field, 13-0. Kelley scored the first on a pass and Bendele drove through the Montana wall for the second touchdown.

Montana outgained the Cougars nine downs to seven, threatened twice, but was always stopped just short of the scoring line.

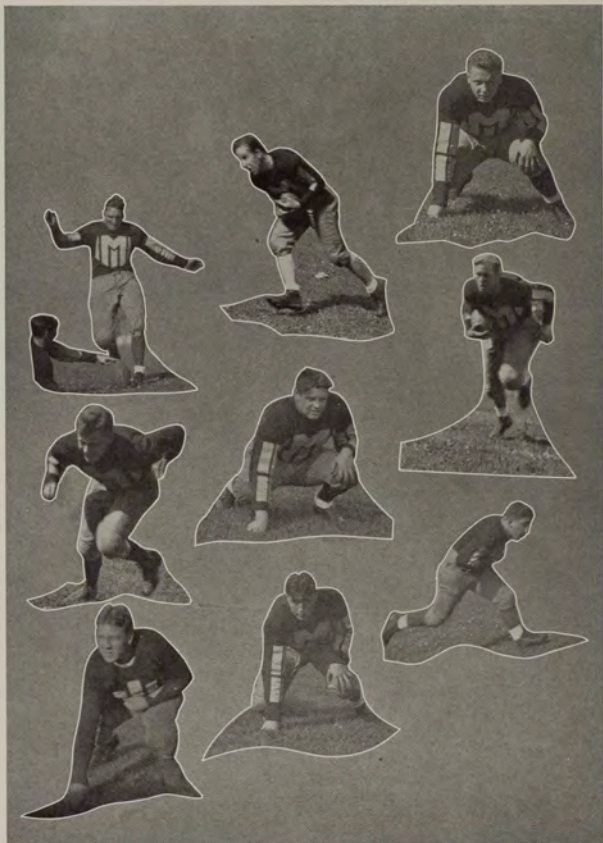
Washington State resorted to but few passes but their accuracy was demoralizing to the Montana team.

The defeat was costly for Montana. Dailey, fullback, sprained his ankle and Crowley, quarterback, suffered a minor concussion.



Russel Peterson,
Game Captain

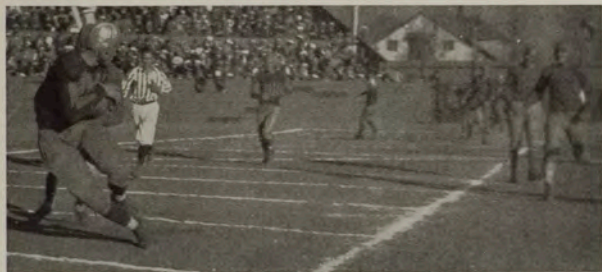
THE SEVENTH



Peterson
Secrest
Vidro

Prather
Snyder
Williams

Reynolds
Story
Wilson



Lyman Scores in the Montana State Game

Montana-Montana State Game

Completely outclassing the ancient rivals from Montana State College, the Grizzlies ran wild to defeat the Bobcats, 37-6, at Clark park, Butte. Four touchdowns by Dailey, one by Caven and one by Lyman, who added the conversion, spelled the victory.

Parke, diminutive quarterback for the Bobcats, escaped the Grizzly defense for the lone Montana State College score late in the last quarter.

A crowd of about seven thousand persons watched the Grizzlies rout the Bobcats. The beating was the second worst that the Grizzlies have dealt to the Bobcats, upsetting all predictions as to the Grizzlies' power.



Frank McCarthy,
Game Captain



Grizzlies Punt on the Oregon State Field

Montana-O. S. C. Game



Walter Cox,
Game Captain

Oregon State Beavers, calm yet decisive on attack when within scoring range, downed Montana, 19-0, on Bell field. Both teams were on par in rushing and passing yardage. Superior punting and returning of kicks gave the Beavers a decided edge. Both teams made four first downs; Oregon had a six-yard advantage on rushing and one yard on passing.

Several times Montana backs, after trying the heavy O. S. C. line, would suddenly get in the open only to fall down with a touchdown in sight.

The Beavers scored late in the first quarter and twice in the fourth quarter.



National Champions Return a Grizzly Kick

Montana-U. S. C. Game

Later national champions, Southern California displayed overwhelming power drives with a fair passing attack in downing the Grizzlies, 69-0. The Trojans' power was unstoppable for any length of time. The Grizzlies were unable to puncture successfully the Trojan line.

Long runs accounted for the most of the Trojan scores. Pinckert raced 81 yards for a touchdown, the longest run of the day. He totalled 110 yards in three plays.

Reynolds was outstanding during the afternoon for his punting exhibition, outclassing that displayed by the men of Troy.

Murray, Peterson, McCarthy and Cox, playing their last game, were outclassed by the sheer power of the Trojans.



Leonard LeRoux,
Game Captain



Freshman Football Squad

Cub football prospects turned out nearly one hundred strong at Coach A. J. Lewandowski's first call, with a wealth of material in sight. Thirty-six men, the largest number to receive freshman sweaters, were awarded numerals at the end of the season. Previously the high mark had been twenty-eight.



Bob Flint,
Manager

The Cubs, in their only game of the season, defeated the Bobkittens, 40 to 6 at Bozeman, November 7. The game was featured by long passes and brilliant runs. Cub stars, Hileman, Vesel, Duffy, Swanson and Rhinehart, on the receiving end, used both Cub and Bobkitten passes to make it a spectacular and one-sided game.

The lone Kitten touchdown came in the last quarter with all of the Cub substitutes playing. Previous to this victory no State University freshman football team had ever won a game at Bozeman.

BASKETBALL



Varsity Basketball



Glenn Lockwood,
Captain



Lloyd Andrews,
Captain-Elect



Standing—Thompson, Hinman, Dahlberg, Lyman, Murray, Caven, Fitzgerald, Patterson
(manager).
Seated—Steenland, Erickson, Andrews, Lockwood, Jones, Logan, Krause.



Andrews



Caven



Dahlberg

Grizzly Basketball Season

Montana's basketball season started in a very inconspicuous manner—four straight defeats—but ended the season with a split two-game series here with Montana State College that had about two thousand fans yelling hysterically.

The squad suffered one misfortune after another. Jack McDonald left school; Dick Fox, guard last year, underwent an operation. Then influenza at different times incapacitated most of the team.

The Vandals grabbed two contests at the State University. On the first



Erickson



Fitzgerald



Hinman





Jones



Krause



Lockwood

night they fought hard to win, 44-40, and then turned on the Grizzlies the next night, beating them 41-27. Everett Logan and Al Dahlberg made 13 and 11 points respectively the first night but Idaho found the basket twice too often.

When the Grizzly invaded the Palouse country, he was beaten back 49-22 by Idaho, and 54-25 by Washington State College. Again Montana was overwhelmed twice by the Cougar, who thundered through the Grizzlies, 52-36, and 60-31. Rogers, Gordon and Holsten proved too elusive and accurate.

After a week's rest, the Grizzlies wrestled a game from Gonzaga, 33-27.



Logan



Lyman



Murray



THE SEVENTH



Steensland



Thompson



Patterson

and then the Bulldogs won the second contest, 41-33. It was Montana's first victory in seven starts and the campus denizens cheered hopefully.

Montana State College assured itself of the retention of the state title as the Bobcats out-scored the Grizzlies, 40-34, and 30-20, but not without a struggle. The second night the score had been tied three times but always the Bobcats had the power to pull away. Wendt of the State College scored 19 points the first game but in the second contest he was shut off with but one point, Buzzetti scoring 18.

The Huskies pounded out two victories over the Grizzlies, 44-16, and 34-14 at Seattle. Once more it was a case of being clearly outclassed, which coupled with the long journey, spelled defeat.

While on the coast tour, Grizzlies dropped two games to Whitman by scores of 29-28 and 38-31. But apparently tired of losing, the State University team ended the tour with a brace of victories over Gonzaga, 31-30 and 28-27.

Just previous to the Oredigger-Grizzly games, Captain Glenn Lockwood suffered an attack of influenza and Jimmy Jones developed heart trouble. But replacements filled in capably and the Grizzlies took two more games, 39-29 in the overtime period, and 45-36.

The State University captured the second game of the Montana State College series here, 43-30, but lost the first, 43-37, before a huge crowd. Both teams played nip and tuck basketball and it was a slam-bang battle all the way. Montana substitutes who were rushed in stood staunchly in the way of the Bobcat offense and in both games they contributed heroic support. Murray, playing his last game for the Grizzly squad, was outstanding at guard. Captain Lockwood was forced to sit on the sidelines on account of illness.



Standing—Fox, Smith, Holmes, Castor, Blaskovich, Lacklen, Kenfield, Taylor, Lewandowski (coach).
Seated—Hovee, Hartsell, Brown, Emery, Frisbie, Hileman.

Freshman Basketball

Cub basketball men, under direction of Coach A. J. Lewandowski, averaged $40\frac{3}{8}$ points per game to win eight games during a short season. Defense was a minor part in the game, both guards and forwards taking part in the scoring.

The Cubs defeated Fort Missoula twice and won one game each from the Orange Crush, All-Star, Idle Hour, Alsteens, Missoula county high school and Boettcher quint.

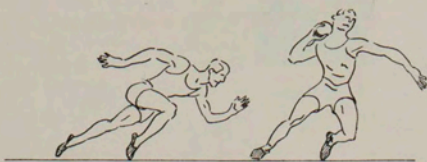


Lehman Fox,
Manager

During the season, the freshmen scored a total of 323 points to 128 points for their opponents. Albert Heller took the scoring honors in six games with Jimmy Brown and Glen Frisbie each being high-point man in one of the other games.

The consistent playing of Naseby Rhinehart, Cal Emery, Albert Heller, William Hileman, James Brown and Glen Frisbie was a great contributing factor in the Cub success.

TRACK





Top Row—Spanning, Caven, Lockwood, Peterson, Reynolds, Murray, Taylor.
 Standing.—Dahlberg, McDaniels, Agather, Wickware, Viekerman, Good, Rossiter, J. White,
 Glenn, Flint, O'Neil.
 Seated—Robertson, Stearns, Bainton, Bills, Watson, B. White, Smalley, Covington, Steensland,
 Griffin.

Varsity Track

Montana swept through the State Intercollegiate track meet with a total of 86 1-3 points in 1931. Montana State College took second with 39 points. A soggy track kept the men from breaking any race records but Lockwood threw the javelin 186 feet 11 inches for a new state record.

Records fell like raindrops in April when Idaho defeated the State University, 71-60, on Dornblaser field. Lockwood boosted the javelin record to 190 feet 9 inches. Nelson lifted his high jump record to 6 feet 1½ inches, and Ruth established a new record in the broad jump at 22 feet 5⅞ inches. Idaho set two new records for that state in the shot put and the high hurdles.

Watson won both the mile and the two-mile runs with a smooth style which astonished Anderson, Vandal coach, but pleased Grizzly backers. Montana won the relay in 3 minutes 32.1 seconds.



Lawrence Neff,
 Manager

Montana received nine points from one first, one third and two fourths in the northern division of the Pacific coast conference track meet. Bob Nelson cleared the bar at 6 feet 1 inch for a first but tipped the stick off on a try for a new record at one inch higher. Clarence Watson took third in the two-mile run after a fast sprint on the homestretch. Harold Ruth leaped 21 feet 9¾ inches for a fourth in the broad jump and Glenn Lockwood threw the javelin 187 feet 1 inch for another fourth.

Five records toppled as the meet developed into the

THE SEAVINE



Bainton

Bills

Caven

Covington

fastest that has ever been held by northern division schools. Washington took first with $60\frac{1}{2}$ points. Montana placed fifth, just above Idaho.

Ten men received letters for their efforts during the 1931 season. They were: Elbert Covington, Bob White, Don Stevlingson, Clarence Watson, Glenn Lockwood, Harold Ruth, Bob Nelson, Bob Parmenter, Emile Perey and Al Flint. Of this group Covington, White, Watson, Lockwood and Flint are members of this year's track team. Archie Grover and Emile Perey captained the track team last year. This year no captain was chosen.

Under usual weather conditions, Coach J. W. Stewart began to bring his men along rapidly after the first two weeks of practice. The discus men



Perey Puts the Shot



Watson Wins a Thriller



Cox

Crego

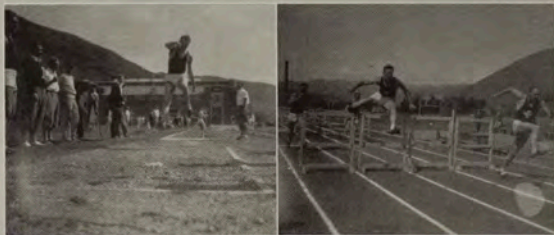
Flint

Griffin

developed the most rapidly of the squad, early in the season throwing the platter more than 130 feet.

As the season opened it appeared that Montana would be strong in at least three events—the mile and half-mile runs and the javelin throw. On his record of the year previous it looked as though Clarence Watson would go far in the conference circles. Lockwood, it was thought, would break his own state record and cause some misery for javelin men in the conference. White, although beaten by Thomas of Idaho by one stride in the half-mile last year with the clock at 2:02.3, has developed into a dangerous runner.

Through an agreement between the coaches, the freshman athletes were



Flint Places

Idaho Leads in the Hurdles



Hawke

Lockwood

Murray

O'Neil

allowed to take part in spring football practice and the upperclassmen to compete on the track team. After football was over the freshmen appeared on Dornblaser cinders for their workouts. In this way possible point winners on the track would not be hampered by having to attend sessions of the two sports. Freshmen, also, would get acquainted with Coach Oakes' style of football before they became eligible for the varsity.

A list of this year's track men shows: Sprints—Monte Robertson, Fred Griffin, John Bills; high hurdles—Al Spaulding, Art Caven, Billy Vickerman; low hurdles—Victor Agather, Art Caven and Al Spaulding; 440-yard dash—Elbert Covington, John Bills, Owen Loftsgaarden and Jack White; half-mile run—Bob White, Charles O'Neil and Armin Glenn; mile



Lockwood Puts It Out



Covington Breaks the Tape



Peterson

Reynolds

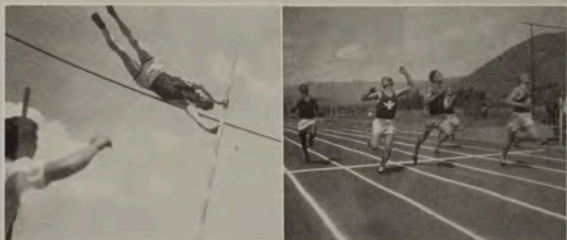
Robertson

Rossiter

run—Clarence Watson, Ray Smalley and Robert Wickware; two-mile run—Clarence Watson, Lewis Steensland, Tom Taylor and Fred Benson.

Those trying out for field events are: Pole vault—Billy Burke, Hugh Lemire, Lewis McDaniel and Dave Rossiter; high jump—Billy Vickerman, Francis Good, Dave Rossiter, Al Dahlberg and Jack Bainton; shot put—Henry Murray, Russel Peterson, Monte Reynolds and Charles Bell; discus throw—Walter Cox, Russel Peterson, Henry Murray, Clyde Crego and Monte Reynolds; javelin—Glenn Lockwood, Leonard Schulz and Bill Hawke; broad jump—Monte Robertson, Al Flint and Jack Bainton.

Montana competed in four meets with outside schools—the Montana intercollegiate meet here, the triangular meet with Washington State College



Burke Up and Over

A Close Dash Finish



Spaulding

Watson

B. White

J. White

and Idaho, a dual meet with Idaho here and the northern division of the Pacific coast conference meet.

For the coming year Montana's best prospects lie in Robertson who should score in the broad jump and the dashes, Clarence Watson and Bob White in the distance and middle distance runs respectively. Covington should be able to make some good time in the 440-yard dash and Peterson, Cox and Murray are looking good in the weight events. Bill Hawke should come forward in the javelin due to Lockwood's ineligibility.

This year's track team is the last State University team that will be coached by J. W. Stewart as the vacancy left open by his resignation will be filled by Harry Adams.



Nelson at Six Feet

Stevlenson to White





Top Row—McPhail, Perlman, Strand, Barnes, Duff.

Standing—Simons, W. Wood, Teegarden, Castles, Gilham, Kerns, Hughes, White, Griffith, C. Flanagan.

Seated—Beagarie, West, Duffy, King, Saylor, Shadoan, Dwyer, O'Donnell, Miller.

Freshman Track

With several Interscholastic Track Meet point-winners from previous years on the Cub track squad, Coach J. W. Stewart was optimistic from the start about their possibilities. The Cubs worked out with the varsity men, going through their paces simultaneously. This, Stewart believed, would give the freshmen a chance to see what they will be expected to do as varsity material.

Kenneth Duff, former Butte Central track star, and Roy Peden, Miles City sprint flash and holder of the 100-yard dash record, waged a continual dual in the sprints. Dave Duncan, winner of the half-mile and mile runs in the 1931 Interscholastic, was outstanding in those races. Rudy Saylor, point winner for Missoula county high school last year in the annual high school meet, showed well against the varsity this year.

The Cubs did not enter into competition with any outsiders. Some of them did, however, enter the interclass and interfraternity track meets.

INTRAMURAL





T. Cooney Sheridan Markin Kuka Myers Benson Banfield

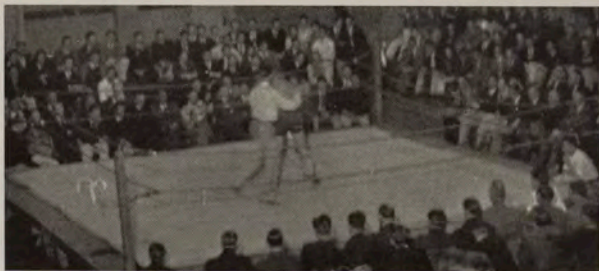
Minor Sports

The third annual minor sports carnival held by the State University and State College was won by the Bobcats, 84-44. The boxing honors were divided, 12-12.

In the boxing events, Rex Henningsen severely punished Scovich to win the state middleweight championship. Dick Jones was awarded a technical knockout over Neil Sullivan for the welterweight title.

Clyde Banfield threw W. Greebe for the 145-pound championship, and Leonard Kuka took heavyweight honors.

Francis Malone, Scotty Stratton, Mitchell Sheridan, Fred Benson, Ted Cooney, Robert Myers and Nick Wren also made the trip to Bozeman.





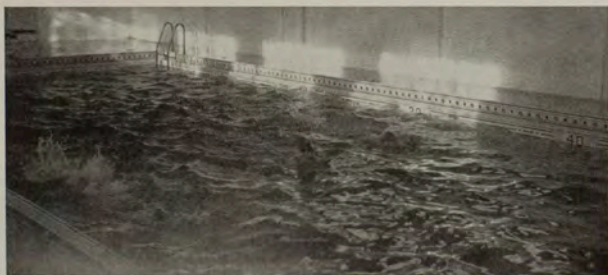
First Row—Landall, Bell, Harrison, King, M. Crowley.
 Second Row—O'Neil, Barker, Hoye, McCarty, B. Cooney.

Swimming Team

Bob Cooney was the only State University tank man to retain his title in the swimming meet with Montana State College at Bozeman.

Henry Fox, Montana State College aquatic star, set new records in the 40-yard free style and 100-yard free style to take individual honors in the meet, which was won by the Bozeman swimmers, 42-20.

R. Bell scored for the Grizzlies by taking third in the 100-yard breast-stroke and third in the 100-yard free style. The medley relay also went to the State University men. O'Neil placed third in the 100-yard breaststroke and M. Crowley was second in the diving events.





T. Cooney Johnson Kuka Myers Benson Brooks

M-Club Winners

Sixteen campus championships were decided in the annual M club tournament held early in March. One crown slipped—Francis Malone handing his featherweight title to Noral Whittinghill. Whittinghill's heady fight won for him the cup awarded by the M men for the best boxing exhibition.

Chuck Goodspeed successfully defended his junior welterweight title.



Goodspeed Henningsen Prendergast

K. Carpenter stepped onto the heavy-weight throne, and Walfrid Fallman donned the middleweight crown. Bob Prendergast retained his bantamweight title by default and Rex Henningsen won the welterweight championship by a knockout. Sherman Miller retained his light heavy-weight title and Jimmy Brown out-generated Scotty Stratton to win in the lightweight division.

In the wrestling bouts, Myers, Benson, T. Cooney, Swanson, Johnson, Kuka and Brooks acquired titles. Frank LeSage won the fencing bout.





Fitzstephens

Currie

Schulz

Lemire

Loftsgaarden

Intramural Basketball

This year the interschool title was won by the Lawyers with four victories and one defeat. Second place was won by the Business Ad Bombers, with the Pharmacists in third place.

The lineup for the Lawyers included Loftsgaarden, Schulz, Lemire, Currie, Fitzstephens, Gilfeather and Boone. Watson and Williams were scoring aces for the Bombers.

In the intercompany race between companies in the State University R. O. T. C. unit, Company B won all of its contests to take the pennant. Teams were also entered by A and C companies.



Raff

Hartsell

Brown

Heller

Hovee





Duff Crowley Coughlin Grafton Hartsell Lacklen Brown

South Hall Basketball

Third West, with a record of five victories and no defeats, was an easy victor in the fourth annual South hall basketball tournament. Six teams, one representing the faculty, were entered in this year's competition which started early in the winter quarter. One team represented the first floor, while second and third floors were represented by two teams, one from each wing.

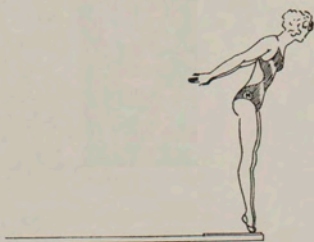
After starting out the season by receiving defeats from First Floor and Third West, the faculty team, headed by Carl Ross and Ted Rule, came back in its third game to defeat Third East, 73-13. The following evening the faculty slaughtered Second West, 84-6, and in the final game defeated Second East, 31-27, to tie with that team for second place in the final standings. First Floor followed in third place, with Third East just out of the cellar, which was held down by the much-defeated Second West team.

Jimmie Brown was manager of all west wing teams and Lincoln Bohlander managed those from the east wing. James Swango captained the First Floor team; Cale Crowley, Third West; Owen Barnes, Third East; Cal Emery, Second West, and Richard Jones, Second East.

Cale Crowley, Lewis Hartsell, Jimmie Brown, Cregg Coughlin, Elmer Link, Charles Stroup, Bob Lacklen, Kenneth Duff and Merrill Grafton were members of the victorious Third West team.

The participation of a faculty team in intramural basketball was a new event this year and its sensational rise from cellar position to second place caused no little interest in the tournament race. Besides Ross and Rule other members of the team were Kirk Badgley, Carl Blair, E. L. Freeman, Andrew Cogswell and Harry Adams.

WOMEN'S ATHLETICS





Margaret Randall Mildred Renshaw Una Randall Olive Lewis Ruth Jones

Women's Athletic Association

OFFICERS

Margaret Randall	-	-	-	-	-	-	President
Mildred Renshaw	-	-	-	-	-	-	Vice President
Una Randall	-	-	-	-	-	-	Secretary
Olive Lewis	-	-	-	-	-	-	Treasurer

The Women's Athletic association has been sponsor of all women's athletic activities and sports on the State University campus since the fall of 1922. The organization has as its aims, the interest of college women in athletic activities. Basketball, baseball, hockey, track and swimming are the major sports sponsored by the association, under managers appointed by the executive council. Volleyball, archery, tennis, golf and hiking are minor sports.



Margaret Randall

Copper-colored M's are given by the organization to all girls making nine first teams or to those who participate in eleven quarters of any of the sports sponsored by the organization.

On March 5, the first Intercollegiate Play Day was held, with representatives coming from Montana State College.





Mildred Renshaw, Laura Martin, Sara Miles, Ada Wood
Margaret Breen, Catherine Harrington, Una Randall, Margaret Randall

Baseball—All-Star

Freshman women won the interclass baseball contest, Field Day of spring quarter 1931. Sophomores took second place, while the juniors and seniors did not compete.

Vera Anderson managed the baseball tournament which forms an important part of the annual Track and Field Day. Sara Miles had charge of the freshman team and Leola Stevens was manager of the sophomores.

A baseball tournament is held each spring quarter on Track and Field Day with women representing each class entered in competition.

The 1931 all-star team for baseball included Mary Castles, Celia Caffin, Estelle Fletcher, Edna Henriksen, Glory Morin, Mildred Renshaw, Mary V. Rose, Leola Stevens, Mary Sulgrove and Sara Miles.

Basketball—All-Star

The senior team won the women's basketball tournament for the fourth consecutive time since this group entered the school four years ago as freshmen. In the final games held March 1, 1932, sophomores placed second and freshmen third.

Members of the senior team are Una Randall, captain; Margaret Randall, Bertha Cone, Margaret Seaton, Edith May Baldwin, Fae Logan, Elizabeth Perham, Mary V. Rose and Ruth Leib.

Leola Stevens managed the interclass tournament which is held every year. From the four teams competing, the all-star team was chosen. Those selected were Mildred Renshaw, Sara Miles, Margaret Randall, Una Randall, Ada Wood, Margaret Breen, Elizabeth Perham, Laura Martin and Catherine Harrington.





Laura Martin Sara Miles Mildred Renshaw Margaret Randall
 Mary Castles Ada Wood Una Randall
 Juanita Armour Mildred Dorsey

Hockey—All-Star Team

Junior and senior co-eds won the championship of the interclass hockey tournament in a team composed of members of both classes. They cinched their place in the round robin tournament when they scored over the sophomores in the last game, November 4. The final standings of the teams were as follows: Junior-senior, first; sophomore, second; freshman, third.

Members of the all-star team, selected near the end of the quarter, were: Juanita Armour, Willie Clary, Mary Castles, Bertha Cone, Mildred Dorsey, Geraldine Ede, Margaret Leon, Eva Lesell, Olive Lewis, Laura Martin, Dorothy Miller, Margaret Randall, Una Randall, Leola Stevens and Ada Wood.

Archery

Archery is a newly-inaugurated but popular minor sport among women on the Montana campus. State University of Montana women received fortieth place among sixty schools competing in a national intercollegiate telegraphic archery tournament in May of 1931.

The archery team was composed of those making the highest scores in the meet. It included: Emma Bravo, Maxine Davis, Jeanette Duncan, Grace Ludwig, Dorothy Miller, Icyle Rich, Lorraine Rowe and Ada Wood.



Martin, Mayo, Miles, Wells, F. Harrington
Bailey, C. Harrington, Renshaw, Guyer, Doggett

Swimming Team

Freshman women scored 34 points to the sophomores' 28 at the annual interclass swimming tournament held December 3, 1931. No junior or senior teams entered the meet. Sara Miles managed the contests.

The events for the tournament included a plunge for distance, a 20-yard crawl, 20-yard back stroke, 20-yard under water swim, 40-yard dash—free style, diving and side stroke for style.

Carol Wells was high point woman with 15 points earned by taking first in the 20-yard crawl, first in the side stroke for style and first in the 40-yard dash.

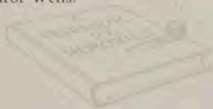
Sara Miles placed second with a score of 13 points. She earned first place in the back stroke, the underwater swim, and second in the 40-yard dash.

Grace Doggett received third place with ten points. These were won by taking first in the plunge for distance, second in the 20-yard crawl, and tying with Gladys Mayo for second place in the side stroke for form event.

Grace Doggett, Florence Harrington and Louise Geyer were members of the winning freshman team.

The all-star swimming team included Grace Doggett, Louise Geyer, Sara Miles and Carol Wells.

Five women were entered in the swimming events of Play Day held March 5 with representatives from Montana State College. They were Louise Geyer, Catherine Harrington, Laura Martin, Sara Miles and Carol Wells.





Mildred Renshaw, Marie Cuffe, Ada Wood, Catherine Harrington

Track—All-Star

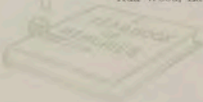
Sophomores placed first in the annual Track and Field day for all State University women, held during the spring quarter, 1931. Freshmen took second place and seniors were third. Track events included hurdles, individual and relay races while the field events were broad and high jumping, discus, javelin, basketball and baseball throws and shot put.

Volleyball Team

An independent team won the intramural volleyball championship from nine other competing teams and captured the W. A. A. pennant offered in this sport. Faculty and Delta Gamma teams tied for second place in the tournament.



Ada Wood, Laura Martin, Marie Cuffe, Margaret Rundall, Una Randall, Marion Davis



ORGANIZATION



SYSTEM
MORALE
WISDOM
INTUITION
LEADERSHIP



Patten Ullman Pollinger Breen

A. W. S.

OFFICERS

Ella Pollinger	- - - - -	President
Julia Patten	- - - - -	Vice President
Frances Ullman	- - - - -	Secretary
Mary Breen	- - - - -	Treasurer

Associated Women Students of the State University is an organization of all the women students in school. Organized in 1914 as the Women's League, later named the Women's Self Governing association, the present A. W. S. was formed in 1924. Its purpose is the legislation and enforcement of rules governing the women students.

A. W. S. sponsors a Co-ed Prom for all women in the fall quarter. This year the prom consisted of vaudeville skits given by the sorority groups and women of North and Corbin halls. Prizes were awarded Zeta Chi sorority and Corbin hall for their acts.

The Co-ed formal, a dance at which the women assume all responsibilities as hosts for the evening, is given during the winter quarter.

Other activities of the organization include a dinner for senior women, a spring picnic, a tea for visiting Interscholastic contestants and supervision of the May Fete.

Associated Women Students is governed by an executive board composed of the officers, chairmen of the standing committees, and representatives from each sorority, women's dormitories, Mortar Board, Tanan-of-Spur, Women's Athletic association and Central Board.



Standing: R. Cooney, Warden, Lyman, Curtis, Logan.
 Seated: Wood, Barnhill, Shallenberger, Hendon, Elrod, Mumm, Mooney.

Central Board

OFFICERS

Robert Hendon	- - - - -	President
Miriam Barnhill	- - - - -	Vice President
Marjorie Mumm	- - - - -	Secretary
Billy Burke	- - - - -	Business Manager

MEMBERS

Robert Cooney, Everett Logan	- - - - -	Senior Delegates
John Curtis, Horace Warden	- - - - -	Junior Delegates
Chalmer Lyman	- - - - -	Sophomore Delegate
Thomas Mooney	- - - - -	Kaimin Editor
Roy Wood	- - - - -	Yell King
Dr. M. J. Elrod, Dr. G. D. Shallenberger	- - - - -	Faculty Representatives
E. K. Badgley	- - - - -	Student Auditor

Central Board is the student governing body of the State University, consisting of all the officers of the Associated Students of the State University. These officials, with the exception of the Kaimin editor and the yell king, are elected annually at the spring elections.

Central Board manages all activities which are under the jurisdiction of the associated students, as well as controlling the expenditures of all student funds. Weekly meetings of this board are held on Tuesdays.





Standing: Marrs, Shaw, Thirloway, Pool, Boileau, Evenson, Wagner.
Seated: Randall, MacDonald, Bravo, Rich, Corr.

Independent Council

Emma Bravo - - - - - Chairman
Eleanor MacDonald - - - - - Secretary

Interchurch Group

Fellowship group: Orval Dreisbach, president: Margaret Groombridge, secretary. Interchurch group: Joy Browning, president: Margaret Madeen, secretary. Presbyterians: Archie Murchie, president: Bernice Oosterbeek, secretary. Wesley club: Margaret Lease, president: Mary Schoenhals, secretary.



Standing: Madeen, Dreisbach, Schoenhals.
Seated: Browning, Oosterbeek, Groombridge, Lease

HONORARIES





Gillespie, Patten, Barnhill, Stripp, Pollinger, Blaeser, McCall, Regan.

Mortar Board

OFFICERS

Patricia Regan	- - - - -	President
Julia Patten	- - - - -	Vice President
Evelyn Blaeser	- - - - -	Secretary
Helen Fleming	- - - - -	Treasurer

Mortar Board is a senior women's national honorary organization. The highest honor that can be awarded to a woman student at the State University is to be selected to membership of this group.

Selection is made on the basis of scholarship, service and loyalty to the interests of the school. The purpose of the society is to train women for service and leadership. Those chosen for this honor are introduced to the student body and the visitors on the campus at the Singing on the Steps during Interscholastic week. Nine junior women were chosen last year to be members of this organization.



Patricia Regan

The Montana chapter of Mortar Board, Penetralia, is one of the oldest honoraries on the State University campus. It was founded here in 1904 and was granted a charter by the national organization in 1927.





Standing: Cooney, Murray, Lockwood, Sunderlin, Spaulding, Lewis.
Seated: Barnes, Mooney, Gaughan, Stone, Miller, Boone, Meloy.

Silent Sentinel

OFFICERS

Charles Gaughan - - - - - President
Thomas Mooney - - - - - Secretary-Treasurer

Silent Sentinel is the local senior men's honorary organization. The purpose of the organization is to honor deserving men and to furnish them a means of better serving the State University.

In 1904, President O. J. Craig and Prof. Robert Sibly organized Silent Sentinel. The organization, whose purpose was the same as it is now, was kept secret until President Clyde Dunnington took charge. Due to his discouragement of secret clubs, the group was disbanded.

Silent Sentinel was revived in 1921 but the organization was not secret, as it had been formerly. Dean A. L. Stone of the School of Journalism taps the new members from the junior class at Interscholastic Track Meet S. O. S. Members are chosen on a basis of leadership and service.

Dean Stone and J. E. Miller, dean of men, are honorary members of Silent Sentinel. The group holds regular meetings at which ways and means of serving the State University are discussed, and later put into effect.



Charles Gaughan





Top Row: Blair, Gough, Long, Frasier.
 Standing: Bell, Fox, Olsen, Hawke, Bainton, Roe.
 Seated: Wertz, Stratton, Sanders, Erickson, Tweto, Jones.

Bear Paw

Sophomore Men's Honorary

OFFICERS

Claget Sanders	- - - - -	President
Scott Stratton	- - - - -	Right Paw
William Erickson	- - - - -	Left Paw

Work done during Interscholastic Track and Field Meet each May is the most important contribution of Bear Paw, sophomore men's honorary society.

During the Track Meet, members of the group meet each train, escorting contestants to their lodging places.

Outstanding service, leadership and scholarship are the qualities necessary to make a student eligible for membership.

It is the aim of this organization to enforce the traditions of the campus, curtail walking on the grass and act as ushers at basketball and football games. The practice of members carrying paddles was abandoned this spring.

Members of Bear Paw wear white sweaters, trimmed in the school colors of copper, silver, gold, with the symbolic emblem of the organization on the front of the sweater.



Claget Sanders





Top Row: Hanford, Kimball, Miles, McElroy, Martin, Larson.
 Standing: Busey, Brekke, Sullivan, Rigney, Armour, Kelleher.
 Seated: Cooney, Eastman, Schroeder, Greene, Stadler, Midgett, Jacobson.

Tanan-of-Spur

Sophomore Women's Honorary

OFFICERS

Lina Greene	- - - - -	President
Betty Kelleher	- - - - -	Vice President
Helen Schroeder	- - - - -	Secretary-Treasurer

Tanan-of-Spur, sophomore women's honorary, corresponds to Bear Paw, men's organization; only outstanding women of the sophomore class are selected to become members of this group. The organization assists in upholding the laws and traditions of the State University.

During Interscholastic Track Meet week, the organization performs its greatest duty, that of meeting trains and escorting guests to their lodging places. In doing this work, members of Spur co-operate with the Bear Paw members and take care of all the contestants who come for the meet.

During freshman week in the autumn quarter, the Spurs meet the trains and bring the women to the dormitories.

New members are tapped early in the autumn quarter at one of the school's football games.



Lina Greene





Top Row: Hawes, Evenson, Cooney, Beechel, Dobrinz, Lawrence, Woolfolk, Calkins.
 Standing: Benson, Frykman, White, Hoyer, Centerwall, Holgren, Pool, Murchie, Flint, Whitaker, Stillings.
 Seated: Jensen, Fobes, Neff, Chapin, Shields, Larson, Spaulding, Guntermann, Love, O'Neil.

Druids

Local Forestry Honorary

OFFICERS

Stanford Larson	- - - - -	President
Al Spaulding	- - - - -	Vice President
John Shields	- - - - -	Secretary
Wilbur Chapin	- - - - -	Treasurer

The Druids, local honorary forestry fraternity, was organized on the Montana campus in 1923 for the purpose of providing a common meeting ground for upperclass men and faculty. Ralph Fields, then a student, and Prof. F. G. Clark founded the organization, wrote a code of ethics, a constitution and formulated a ritual. Members of the group are selected for their scholarship and outstanding work in the School of Forestry.



Stanford Larson

Meetings are held semi-monthly with students in fraternities or private homes acting as hosts. After business meetings, topics of interest to members of the profession are discussed.

Initiations are held each autumn and spring quarter far back in Pattee canyon at the "sacred grounds of the Druids." Here new members are admitted, pledged to perpetuate the profession of forestry and to tighten the bonds within the group.



Standing: Kennedy, Gardner, Long, Brown, Bovingdon, Angus.
Seated: Taylor, Barnhill, Blaeser, Hemgren, McGrade, Metlen.

Montana Masquers

Local Dramatic Group

OFFICERS

Clifton Hemgren	- - - - -	President
William A. Brown	- - - - -	Vice President
Jeanette McGrade	- - - - -	Secretary-Treasurer

"Devil's Disciple," "Death Takes a Holiday" and "The Far-Off Hills" were the three major productions staged by the Montana Masquers during the school year. "Death Takes a Holiday" was produced in co-operation with the State University alumni, in a down-town theater.

In addition to these major productions, "The Hairy Ape," an eight-scene play, was produced at the beginning of the spring quarter. Several one-act plays were presented each quarter also.

This year the Montana Masquers re-organized the group, changing the requirements for membership. A point-system was established and each member now must gain 30 points for his work in the various productions. In addition to this, the University Players were organized as a subsidiary of the Masquers. To become a member of this group 15 points must be earned.



Clifton Hemgren





Standing: Calkins, Larson, Shields, Beechel, Fobes.
Seated: Arnett, Davis, Carstens, Young, Denney.

Phi Sigma

National Biological Fraternity

OFFICERS

Martin Carstens	- - - - -	President
Gregory Short	- - - - -	Vice President
Mary Agnes Young	- - - - -	Secretary
Amos Denney	- - - - -	Treasurer



Martin Carstens

Lambda chapter of Phi Sigma was established on the Montana campus in 1919. Phi Sigma is a national honorary biological fraternity. Candidates for membership must have a "B" average in their biological work and more than a "C" average in their other university work. The purpose of the club is to furnish a means of scientific research and study. The group meets on the first Tuesday of each month.

This year, for the first time, Phi Sigma sponsored public and semi-public meetings to which people interested in science were invited. For these meetings, both lecturers and films were obtained.





Top Row: Gilbert, Schneider, Scott, Kennedy, Sheridan, Cooney.
 Standing: Kirton, Nutter, Curtis, Steiner, Covington.
 Seated: Astle, Hardy, Stone, Cogswell, Mooney, Alquist.

Sigma Delta Chi

Men's Professional Journalism Fraternity

OFFICERS

Thomas E. Mooney	- - - - -	President
Edwin P. Astle	- - - - -	Vice President
Gerald G. Alquist	- - - - -	Secretary-Treasurer

Sigma Delta Chi, men's international professional journalism fraternity, is the oldest professional fraternity on the campus. It was granted a charter by the national chapter in 1915.

Sigma Delta Chi requires a scholarship average which is above the average of the School of Journalism. To become a pledge of this group, students must signify their intentions of following journalistic work after graduation, they must show ability in some field of journalism and be majors in the school.

During the past year, members co-operated with Theta Sigma Phi members in sending out weekly news from the State University to about eighty weekly newspapers of the state. Sigma Delta Chi also gives a cup to the winner of Class C newspapers in the annual High School Editorial contest.



Thomas Mooney





Standing: Rainville, Foot, Wilson, Francis, McLemore.
Seated: Vadnais, McCaig, Abbott, Kennedy, Regan, Stewart.

Theta Sigma Phi

Women's National Journalism Fraternity

OFFICERS

Freda McCaig	-	-	-	-	-	-	President
Irene Vadnais	-	-	-	-	-	-	Vice President
Patricia Regan	-	-	-	-	-	-	Secretary
Idella Kennedy	-	-	-	-	-	-	Treasurer

High scholarship rating in journalism and outstanding work in the school are necessary for those becoming members of Theta Sigma Phi. women's national honorary professional fraternity. which was chartered on the Montana campus in 1916.

One of the outstanding events of the campus, sponsored by this group this year, was the annual Matrix Honor table. Prominent women students were guests of Theta Sigma Phi at this banquet. Hannah Mitchell Danskin of Spokane, newspaper and club woman, was the principal speaker.



Freda McCaig

The "30" Service is another activity of Theta Sigma Phi. It furnishes source material for papers, on Montana history or other topics, to women's clubs and high school teachers.

Other activities of the organization include a portion of the Interscholastic publicity and the publishing of "Campus Rakings" on Aber Day.



Alpha Kappa Psi

Men's National Commercial Honorary Fraternity

OFFICERS

Herbert Verheek	- - - - -	President
Oscar Limpus	- - - - -	Vice President
Oliver Kinonen	- - - - -	Secretary
Rex St. John	- - - - -	Treasurer

Kappa Psi

Men's National Pharmaceutical Fraternity

OFFICERS

Harold Voight	- - - - -	President
Wallis Duncan	- - - - -	Vice President
John Romersa	- - - - -	Secretary
Leon Richards	- - - - -	Treasurer





Phi Lambda

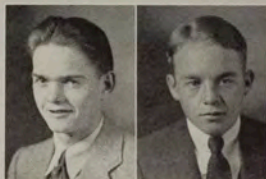
Local Chemistry Fraternity

OFFICERS

Robert Brown	- - - - -	President
Alexander McBride	- - - - -	Vice President
Joe O. Lasby	- - - - -	Secretary
Helmer Hansen	- - - - -	Treasurer



Roy Wood



Phil Pollard

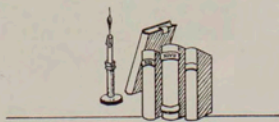
Scott Stratton

Yell Kings

Roy Wood was appointed Yell King to succeed Billy Burke who gave up the office. Philip Pollard and Scott Stratton were selected as assistants. The Yell King takes charge of school rallies and is instrumental in fostering and maintaining school spirit. He and his staff organize and lead the cheering sections at all athletic contests.



CLUBS





Corbin Hall Club

OFFICERS

Thelma Bjerneby	-	-	-	-	-	-	President
Clara Mabel Foot	-	-	-	-	-	-	Vice President
Mary Castles	-	-	-	-	-	-	Secretary
Esther Epstein	-	-	-	-	-	-	Treasurer

All women students who reside in Corbin hall are members of the club. Officers are elected each fall to govern the club for the year. Besides the regular officers, the group elects one member to be a representative to the executive board of the Associated Women Students, the governing body of the women students of the State University. Mrs. Frank Turner has been the social director of Corbin hall since it was opened in January, 1927.



Thelma Bjerneby

The social activities of the group include several dances and firesides. Corbin hall is the newest dormitory on the campus. It was first opened to freshman women only, but next year will become a hall for upperclass women. The hall was named in honor of Frances Corbin, formerly a member of the Department of English at the State University.





North Hall Club

OFFICERS

Carol Wells	- - - - -	President
Esther Strauss	- - - - -	Vice President
Evelyn Juel	- - - - -	Secretary
Donna Hoover	- - - - -	Treasurer

North hall was opened for occupancy in September, 1924, when members of the class of 1927 became its first residents. Mrs. Theodore Brantly has been director of the hall since 1927.

North hall was intended primarily as a freshman dormitory. Beginning next year this dormitory will become once more a home for freshman women only, with the exception of a few upperclass women who are chosen as leaders. It will be the policy of the administrators to arrange rooms in the best possible way for the promotion of a wide range of acquaintances among the residents.

Several social functions are held during the year. During the winter quarter, North hall acts as host at several Sunday-afternoon teas, given for the occupants of the dormitories, fraternities and sororities.



Carol Wells



South Hall Club

OFFICERS

Fred Moulton	- - - - -	President
Lincoln Bohlander	- - -	Vice President, East Wing
James G. Brown	- -	Vice President, West Wing
Cregg Coughlin	- - - - -	Secretary
Kenneth Duff	- - - - -	Treasurer

South hall, the men's dormitory on the campus, was opened officially in 1923. The South Hall club is composed of the residents of the hall, and officers are elected each fall for the ensuing year.

South hall is under the management of students, and is one of the few university dormitories in the United States so governed. Proctors are selected from the upperclass men in the hall and the State University selects a manager, assistant manager and medical proctor from among the older students in the school. Jack O'Brien was manager of South hall this year.



Fred Moulton

The members of the South Hall club give a formal dance in the fall quarter and two novelty dances, a "gangster" and a sport dance, in the winter and spring quarters. A banquet is given for the outgoing freshmen each spring.



Top Row: Welton, Sears, Bernhard, Rauma, Phillips, Brooks.
 Standing: Guntermann, Matsen, Bauer, Beechel, Hague, Holgren, Shields, Landall.
 Seated: Evenson, Fobes, Hawes, McCarty, Captain Rogers, Stillings, Wagner.

Forestry Rifle Club

OFFICERS

Marion McCarty	- - - - -	President
Evans Hawes	- - - - -	Secretary-Treasurer
Robert Matsen	- - - - -	Coach

Activities of the Forestry Rifle club this year began late in the fall quarter when 28 members reported. Practice was conducted at the Forest Service rifle range in the Chamber of Commerce building. Captain Fred Rogers, associate professor of military science, undertook the training of new members of the club on Tuesday evenings. The experienced riflemen practiced on Friday nights.

A shooting match was held in the winter quarter between teams of 10 men selected from the Forestry Rifle club and the United States Forest Service men. The Forestry Rifle club was defeated by 35 points.

Lincoln Landall was the high-point man of the meet. Other high scorers were Eugene Fobes, Robert Matsen, Evans Hawes and John Shields. Other men competing were Marion McCarty, Forrest Bauer, Edwin Rauma, Kenneth Beechel and Lloyd Hague.



Marion McCarty





Forestry Club

OFFICERS

John Shields
President

Eugene Fobes
Vice President

Walter Pool
Secretary

Robert Holgren
Treasurer

Membership in the Forestry club has grown from about twenty in 1914, when it was first organized, to more than one hundred. The object of the organization is to further forestry at the State University and to provide a professional and social meeting ground for forestry students.

One of the outstanding activities of the club during the year is its annual Foresters' Ball. The men's gymnasium is appropriately decorated and everyone attending is expected to appear in costume suitable to the Old West.





Press Club

OFFICERS

Edwin P. Astle	Richard Schneider	Margaret Raitt	Clara Mabel Foot
President	Vice President	Secretary	Treasurer

Membership in the Press club is open to all students taking journalism. The club was established to form a common meeting ground for students in journalism, to further their major work in the State University and to provide discussion on journalistic questions.

"The Shack Splinter" was established this year. This is a small four-page paper published at each meeting of the club. Activities of the club include the annual Press Club banquet, Dean Stone Night and a field trip.





Standing: E. Fredrickson, Morin, Schall, E. Smith, Dowdle, Wilkins, H. Larsen, E. Piercy, Stevenson, Brophy.
Seated: H. Larson, Tupper, Cesar, Seewald, Manis, Gleason, E. Pollinger, Dobner, Eno.

Home Economics Club

OFFICERS

Elizabeth Manis	-	-	-	-	-	-	President
Glory Morin	-	-	-	-	-	-	Vice President
Rose Seewald	-	-	-	-	-	-	Secretary-Treasurer

In 1919 the Home Economics club was organized to encourage greater professional interest in home economics and related subjects. All students majoring or minoring in the department are eligible for membership. Meetings of the organization are held monthly during the school year. Helen Gleason, head of the Department of Home Economics, sponsors the club.



Elizabeth Manis

Members of the club assist in giving several teas during the year and they manage the lunch which is served to the Aber Day workers.

Fall quarter the club made and packed boxes of candy which were given to the occupants of the Missoula County Poor Farm as Christmas gifts. Members also made a patch-work quilt for the proposed Home Economics practice house. Several joint social meetings with the Forestry club were held this year.



Top Row: Cox, Breen, Lool wood, Peterson, Lyman, Kuka, Dahlberg, Covington.
 Second Row: Lemire, Murray, White, McKay.
 Third Row: Dailey, Vidro, Erickson, Caven, Reynolds, Steensland, Watson.
 Front Row: Crowley, Fitzgerald, Meeker, McCarthy, Williams, Andrews, Burns, Logan.

M Club

OFFICERS

Frank McCarthy	- - - - -	President
Lowell Dailey	- - - - -	Secretary

Every man who has earned his letter on a major State University athletic team is entitled to membership in the men's M club. Each member signs his name and the sport in which he participated in a large book, which is the permanent property of the club.

The most important activity sponsored by the M club is the annual M club tournament. Boxing, wrestling, foil and saber contests are included in this tournament. The winners of the preliminary events compete for the championship titles at the M club tourney. The final tournament this year was held on March 3.

The M club also plays an important part in arousing high school athletes' interest in the State University. An M club scholarship is usually given to some prominent high school athlete who could not afford to attend the State University without financial aid.



Frank McCarthy



A. Deschamps, M. Murphy, Father O'Brien, H. Hubert, R. Cooney.

Newman Club

OFFICERS

Robert F. Cooney	-	-	-	-	-	President
Arthur Deschamps	-	-	-	-	-	Vice President
Helen Hubert	-	-	-	-	-	Secretary
Margaret Murphy	-	-	-	-	-	Treasurer

Sixteen years ago the local chapter of the Newman club, organization of Catholic students at the State University, was organized on the Montana campus. At present the club has a membership of nearly two hundred.

Meetings are held during the year on the second Sunday of each month. The members attend mass and, following the service, a breakfast is served in the basement of St. Anthony's church.

Winter quarter of this year, the men of the club gave a smoker with a program of boxing and wrestling matches. Spring quarter, an informal dance was given by the Newman club.

Professor Brassil Fitzgerald acts as faculty adviser to the club. The local organization has been a member of the Rocky Mountain Federation of Newman Clubs since 1929.



Robert Cooney





Top Row: Kreycik, Doull, Squires, W. Duncan, R. Dussault, Vance, F. Bateman, A. Jacobsen, Ullman.
 Second Row: Griffin, Woodrow, Honnald, Rice, Curdy, Voight, Stewart, Kimpel, S. Johnston, A. LaCasse, D. LaCasse.
 Third Row: Romersa, I. Fredrickson, M. Davis, Flasted, Suchy, Landeen, Dohl, Cerise, Jarussl.
 Bottom Row: Drost, Spekker, H. Hamilton, Kushar, Corkish, Noyd, Hurt.

Pharmacy Club

OFFICERS

Edward Flasted	- - - - -	President
Maxine Davis	- - - - -	Vice President
Alice Doull	- - - - -	Secretary-Treasurer

Professional and social interests are combined in the Pharmacy club, an organization made up of all students registered in the School of Pharmacy. The club is an auxiliary of the Montana State Pharmaceutical association.

A mixer, given each fall to introduce members of the club, has entertainment in keeping with the profession. Trips are taken to the beet sugar factory near Missoula each fall, and to the government research laboratory for the prevention of spotted fever, at Hamilton, each spring. One meeting of the spring quarter is a picnic.

The second annual Dean Mollett banquet was held this year, honoring Dean C. E. Mollett who has taught pharmacy students for 24 years. Dean Mollett was unable to attend this year, as he was in Gainesville, Florida, on a leave of absence.



Edward Flasted



Standing: Clark, Boyd, Griffith.
 Second Row: Girson, Reddick, Schoenhals, Mills, Sauer, Trachta, Gossweiler, Parkinson, Baffer.
 Seated: Kench, Oosterbeek, Groombridge, Taylor, Sughrue, Hancock, Mathews, Caird.

Spanish Club

OFFICERS

Clifford Walker	- - - - -	President
Hazel Borders	- - - - -	Vice President
Alice Taylor	- - - - -	Secretary-Treasurer

Organized by Prof. B. E. Thomas in 1923, the Spanish club has grown increasingly active each year. Cecile Virginia Sughrue has directed the activities of the group this year in the absence of Professor Thomas. The club meets the second and fourth Wednesdays of each month, at various fraternity houses.



Clifford Walker

A Spanish banquet was given on October 12, to celebrate "El Día de la Raza" ("The Day of the Race"), a Spanish holiday. One hundred Spanish students and faculty members attended. Toasts were given in Spanish.

On December 9, the group gave a "Pianta," a Spanish Christmas festival. Spanish folk songs and dances were given. Ninety students were present at this celebration. A Spanish three-act play was presented on March 10, in cooperation with the Masquers.

FRATERNITIES





Standing: Hagerty, Deeney, Matthews, Simmons, Verheck, Hendon, Scott, Davidson, Bovingdon, Harrington.
Seated: Wold, Kennedy, White, Lofsgaarden, Dean, Hannant, Hosty, Gaughan.

Interfraternity Council

OFFICERS

Charles Gaughan	- - - - -	President
Harold Dean	- - - - -	Vice President
Hubert Simmons	- - - - -	Secretary-Treasurer



Charles Gaughan

Alpha Tau Omega	- -	George Bovingdon, Oliver Wold
Delta Sigma Lambda	- -	David Hannant, Hubert Simmons
Kappa Sigma	- - -	Roy Davidson, Thomas Hosty
Phi Delta Theta	- - -	William Deeney, Robert White
Phi Sigma Kappa	- - -	Lynott Horan, Robert Hendon
Sigma Alpha Epsilon	- - -	Harold Dean, Wesley Scott
Sigma Chi	- - -	William Hagerty, James Harrington
Sigma Nu	- - -	Owen Loftsgaarden, Herbert Verheck
Sigma Phi Epsilon	- - -	Charles Gaughan, Berton Matthews



Founded at Virginia Military
Institute
Richmond, Virginia
September 11, 1865
DELTA XI CHAPTER
Established 1923



94 Chapters

Alpha Tau Omega



Beckett, Blakeslee, Brown, M. Carnine, R. Carnine
Carroll, Castor, Elderkin, Emery, Frazier, Gallagher, Harris, House
Kirtan, Lanzendorfer, Larson, LeRoux, Lyman, Mills, Nutter, Gech
Riley, Roberts, Robertson, Root, Saylor, Schneider, Secrest, Stroup
Wade, Walkley, Watson, Wertz, Wilson, Woodrow, Wold





Founded at University of
California
Berkeley, California
September 9, 1921
THETA CHAPTER
Established 1927

12 Chapters

Delta Sigma Lambda



Aldrich, Almich, Bateman, Besancon, Castles, Christianson, Clark, Coleman
Curdy, Dahl, Dailey, Duncan, Fallman, Fowell, Fraser, Gomavitz
Hannant, Hansen, Heller, Hoffner, Kerns, Logan, Marcy, McCormick
Moordale, Odden, Overland, Seger, Shadoan, Shields, D. Simmons, H. Simmons
Somerville, Steensland, R. Thomas, S. Thomas, Vance, Walker, West, Veseth

Founded at University of Virginia
University City, Virginia
December 10, 1869

DELTA OMICRON CHAPTER
Established 1927

108 Chapters



Kappa Sigma



Belangie, Dickel, Blankenship, Brown, Chagnon, Christiansen, Davidson, Dunn,
Frisbie, Hinman, Hosty, Johannes, Lewon, C. Little, E. Little, J. Little,
P. Long, G. Long, Moss, Odgers, Olson, Price, Pritchard, Romera,
Silfast, Smith, Stansberry, Stephens, Sterling, Story, Trachta, Vesel

Founded at Miami University
Oxford, Ohio
December 26, 1848
MONTANA ALPHA CHAPTER
Established 1920



101 Chapters

Phi Delta Theta



Agather, Baldwin, Barnes, Bohlander, J. Brown, W. Brown, Burg, B. Burke
Busey, Compton, Cooney, Curtis, Deeney, Dahlberg, Dickel, Duncan, Ennis
W. Erickson, Fitzgerald, Flynn, Fox, Gnose, Hostetter, Holstrum, Hawkins, Jeffrey
Licklen, Lindborg, Lockwood, Manis, Maury, Moulton, O'Rourke, Parmalee, Patterson
Peterson, Pollard, Reynolds, Rhode, Rohlfis, Rutherford, Sayatovich, Smith, Soenke
Sonstelle, Staley, Sullivan, Thompson, Veeder, Watson, White, Wildschut, Wilkins

Founded at Massachusetts
Agricultural College
Amherst, Massachusetts
March 15, 1873

MU DEUTERON CHAPTER
Established 1923

54 Chapters



Phi Sigma Kappa



Allen, Arnot, Bell, Cameron, Carpenter, Chisholm, Coughill
Crutchfield, Cunniff, Davis, Elliott, Ellsworth, Furlong, Gilboe, Goodspeed
Gustafson, Hauck, Hayes, Hendon, Hewson, Hollibaugh, Honnald, B. Jones
R. Jones, M. Kennedy, R. Kennedy, Leslie, Magstad, Martin, Mellinger, Peterson
Pinkney, Quinlin, Ramer, Robinson, H. Snyder, S. Snyder, A. Spaulding, K. Spaulding
Stapp, Stratton, Swanson, Teegarden, Wilburn, Wood, Woodward, Zadra



Founded at University of
Alabama
Tuscaloosa, Alabama
1856
MONTANA BETA CHAPTER
Established 1927

106 Chapters

Sigma Alpha Epsilon



Benton, Bernhard, Black, Blewett, Brown, R. Cooney, T. Cooney, Curtiss, Dean
E. Deschamps, A. Deschamps, Dodge, Fetterly, Fitzpatrick, Flint, M. Gates, W. Gates,
Gutchell, Hamilton
Harrison, Hawke, Hazelbaker, Henningsen, G. Hoven, V. Hoven, Hoye, Huppe, Jacobsen,
C. Johnson
R. Johnson, Lambert, Larson, Lashy, Llewellyn, E. Matson, H. Matson, O'Neil, Olsen, Paddock
Peterson, Place, Raff, Robertson, Rudolph, Schnell, Scott, Sell, Spafford, Stearns
Sunderlin, Tamplin, Waite, Wentworth, Wood, B. Vacura, E. Vacura, Vickerman

Founded at Miami University
Oxford, Ohio
June 28, 1855

BETA DELTA CHAPTER
Established 1906

91 Chapters



Sigma Chi



Alquist, Andrews, Atkins, Barnhill, Blair, Borg, Burns, Clapp, Coughlin, Cunningham, Dixon, Duff, Dussault, Goodwin, Gough, Grafton, C. Flanagan, F. Flanagan, Flasted, Faust, Hagerty, Harrington, Hartsell, Hazelton, Heimbach, Hemgren, Hoblitt, Holmes, Huffman, Jacobs, Jones, Lowney, McCarthy, Metcalf, J. Murphy, M. Murphy, O'Brien, Peete, Rochester, T. Roe, Roskie, Rossiter, Schell, Simons, Spear, Spottwood, Tibbs, J. Tobin, Tyree, Youlden, Van Vorst, Whittinghill, Wilcox, Zeldler



Founded at Virginia Military
Institute
Lexington, Virginia
January 1, 1869
GAMMA PHI CHAPTER
Established 1905

96 Chapters

Sigma Nu



Allen, Arndt, Blaskovich, Brown, Byrne, Clarke, Corkish, Cowperthwaite
Crego, Culver, Donlan, Dussault, Dwyer, Gilham, Griffith, Gullickson, Haugen
Hebert, Hill, Hurt, Karsted, Kelley, Kurtz, Kohlhase, Krebs, LaGrone
Lamb, Le Sage, Loftsgaarden, Maughan, McCarty, Miller, Morrison, Noyd, Paterson
Rand, Rice, Rohel, Rogers, Rorvik, Shaver, B. Sheridan, M. Sheridan, Silva
Smalley, Smith, Spekker, St. John, Tangen, Traxler, Verheek, Wickware



Founded at Richmond College
Richmond, Virginia
1901
MONTANA ALPHA CHAPTER
Established 1918

67 Chapters

Sigma Phi Epsilon



Astle, Beardsley, Centerwall, Connelley, Coriell, Craig, Dahlin,
Erickson, Flint, Gaughan, Good, Grosinger, Holmberg, Halvorson, Lantz,
Lefever, Limpus, Lloyd, Main, Marcyes, Plantico, Sanders, Schroeder,
Scribner, Skoog, Spaulding, Stein, Strand, Turley, Tweto, Wilkinson

SORORITIES





Standing: E. Kaatz, Sweetman, Stussy, Davis, Lehsou, Dyer, Stephenson, Huffman, Ullman, Patten
 Seated: Strand, Martin, Jones, Dunn, Hegland, Adami, Barnhill, Cougill, Larson

Pan-Hellenic Council

OFFICERS

Mary Hegland	- - - - -	President
Julia Patten	- - - - -	Vice President
Miriam Barnhill	- - - - -	Secretary
Jane Adami	- - - - -	Treasurer



Hegland

Alpha Chi Omega	- -	Marion Davis, Frances Ullman
Alpha Phi	- -	Maude Evelyn Lehsou, Loisjane Stephenson
Alpha Xi Delta	- -	Kathleen Dunn, Mary Hegland
Delta Delta Delta	- -	Elza Huffman, Julia Patten
Delta Gamma	- -	Elizabeth Farmer, Sylvia Sweetman
Kappa Alpha Theta	- -	Eleanore Dyer, Margaret McKay
Kappa Delta	- -	Hazel Borders, Mary Martin
Kappa Kappa Gamma	- -	Jane Adami, Miriam Barnhill
Sigma Kappa	- -	Rhoda Cougill, Hazel Larson
Zeta Chi	- -	Eleanor Kaatz, Elizabeth Strand

Founded at DePauw University
Greencastle, Indiana
October 15, 1885

ALPHA XI CHAPTER
Established 1923

58 Chapters



Alpha Chi Omega



Atherstone, Bell, Brekke, Cohe, Connolly, Crego
Davis, Duncan, Epperson, Fletcher, Gaskins, Garrison, Griffin
Hammatt, Head, Howatson, Hurst, Jefferson, Lamb, Lauder
Miles, Murphy, Noren, Powers, Provost, Rigney, Sherman
Spitzer, Sulgrove, Ullman, Watkins, Wendte, Wilkins



Founded at Syracuse University
Syracuse, New York
1872

CHI CHAPTER
Established 1918

36 Chapters

Alpha Phi



Archibald, Bailey, Brown, Cunningham, de Mers, Evans, H. Gillespie
R. Gillespie, Hannifin, Harrigan, Kimball, Kindschy, Larsen, Lehsou, Lentz
Lowe, Manis, Mason, McGlumphy, Morris, Nimbar, Phelan, E. Pöllinger
H. Pöllinger, Putney, Tait, Leonard, Rule, Sanders, Sauer, Schroeder
Smith, Spafford, Stephenson, Swartz, Tait, Tubbs, Tucker

Founded at Lombard College
Galesburg, Illinois
April 17, 1893

ALPHA NU CHAPTER

Established 1924

54 Chapters



Alpha Xi Delta



Anderson, Armour, U. Barber, C. Barber
T. Bjerneby, V. Bjerneby, Deck, Dunn, Geyer, Hansen
Hart, Hegland, Horton, Johnson, Matthews, Manley
Shields, V. I. Smith, V. L. Smith, Steele, Wendt





Founded at Boston University
Boston Massachusetts
November, 1888

THETA RHO CHAPTER
Established 1926

83 Chapters

Delta Delta Delta



Benson, Bernier, Boles, Caird, Davis, Evans
B. Foot, C. Foot, Hanford, Huffman, H. Kelleher, Kinne
Larson, Logan, Olinger, Patten, Rogers, C. Smith
F. Smith, G. Smith, J. Smith, Strauss, Thomas, Wynn

THE SEMINEL 1924

Founded at University of
Mississippi
Oxford, Mississippi
1874

PI CHAPTER
Established 1911

46 Chapters



Delta Gamma



Bateman, Bodine, Brady, Bruckhauser, Cooney, Crawford
Dixon, Duval, E. Farmer, W. Farmer, Fitzpatrick, Galusha, Harden, Jennings
B. Kitt, M. Kitt, Lennes, McQueen, O'Leary, Riedell, Ritchey, Sannan
Stadler, Stussy, Sweetman, A. Wilcox, M. Wilcox, V. Wilcox, Watland



Founded at DePauw University
Greencastle, Indiana
January 27, 1870
ALPHA NU CHAPTER
Established 1909

60 Chapters

Kappa Alpha Theta



Ballard, M. C. Breen, M. E. Breen, Busey, Cooney, Dyar
Dyer, Haines, Harper, Harrington, Johnson, Kelly, Lemmon
Lenon, McGrade, McKay, Mathews, Marlowe, Murphy, Patterson
Ralston, Regan, Steinbrenner, Silverman, Skulason, Smith, Wallace

THE SENTINEL

Founded at Virginia State
Normal College
Farmville, Virginia
October 23, 1897

SIGMA CHI CHAPTER
Established 1924

71 Chapters



Kappa Delta



Blaeser, Borders, Carkeek, Chapman, Eldering, Eamon, Eno
Erickson, Fletcher, Geis, Hahn, Jacobson, F. Jones, R. Jones, Knight
Krum, McDonald, McKelvie, Martin, Midgett, Mills, Moore, Piquette
Roberts, Schweiger, Stevens, Storey, Tressman, Wolfe, Woodcock



Founded at Monmouth College
 Monmouth, Illinois
 October 14, 1870

BETA PHI CHAPTER
 Established 1909

68 Chapters

Kappa Kappa Gamma



Adami, Baldwin, Barnett, Barnhill, Bateman, Bell, Borg, Brown
 Corette, Fee, Fitzgerald, Graybeal, Hammett, Hemgren, Hobbins, Hoover
 Horsky, Johnson, Juel, Junod, McDaniel, Nelson, Nofsinger, Perry
 Polleys, Prentice, Rognlien, Stewart, St. Sure, A. Taylor, O. Taylor, Walker

THE SENTINEL
1924

Founded at Colby College
Waterville, Maine
1874

ALPHA NU CHAPTER
Established 1924

48 Chapters



Sigma Kappa



Avery, Browning, Byrne, Christopherson, Coe, Cosner, Cougill, Dunlap
Helean, Herndon, Hunt, Johnson, Kelleher, Kelley, Kemp, Kingsbury
G. Larson, H. Larson, McKittrick, McLaughlin, McLemore, McLenagan, McMillan, Malone
Mumm, Rand, Seaton, Spencer, Stephenson, Stillings, Stowe, Wik



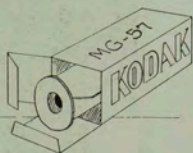
Founded at the State University
of Montana
Missoula, Montana
May 27, 1928

Zeta Chi



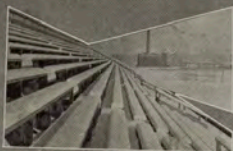
Balgord, Conkling, Eastman
Heydorf, Hubert, Jevnager, E. Kaatz, O. Kaatz, Kerin
Kniffen, Lancey, Lewis, Love, Petaja, Rogness
Shaw, Smith, Strand, Sullivan, Trussel

SCENIC

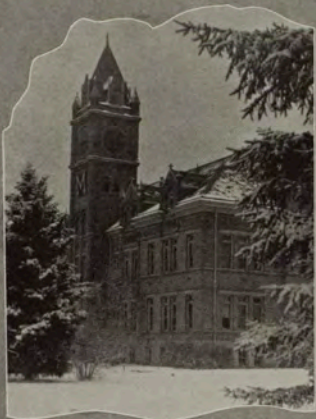




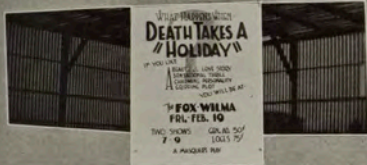
Scenes taken from the summits of Rattlesnake range, the source of Missoula's water supply
Photographs secured through the courtesy of Walter Custer.



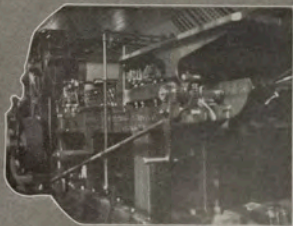
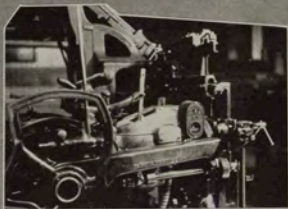
Even winter can not conceal the natural beauty of the Montana campus.



Main hall on a frosty morning. Hockey on the Foresters' skating rink. A partial view of the city from the face of the old clock. (Note clock hands at right of picture.) The practice house. Where the gang congregates between classes.



Death Takes a Holiday, and behold. The passing of Missoula's faithful servant. According to the heart of the big tower clock the bus arrives on time. A faculty pet and a successful handshaker. North for women. One for all and all for grades.



Off to Butte for the annual Grizzly-Bobcat game. The building with a thousand eyes. The Linotype, in the Shack. Pearly lights winked at us through the black night. Re-surfacing the parade grounds. The press.



PIANO CONCERT
JOHN COONER
SUN. 4:30
MAIN HALL
100 FINESTOCK THEATRE



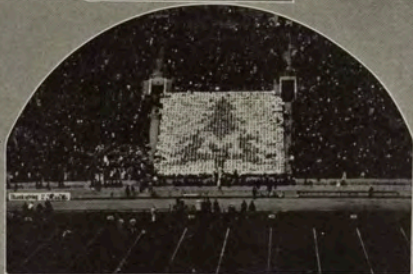
M CLUB TOURNAMENT
Thursday, March 5, 1933
at the
MEN'S GYMNASIUM
SIXTH UNIVERSITY OF MISSOULA
BOXING—WRESTLING—FENCING



Residential district in Missoula. To those who fought for the nation. A "Cat" in the woods. The Natural Science building. Christmas on the campus. The heating plant. Squads right, Rookies! Babe all dolled up for the ball. It was built in 1922 but it has had more dates than that. The Masquers' playhouse. Looking south on John avenue.



Varsity Vodvil. Delta Gamma, Phi Sigma Kappa, Rho Dammitt Rho, Manager Jack Toole, Kappa Sigma and Delta Delta Delta.



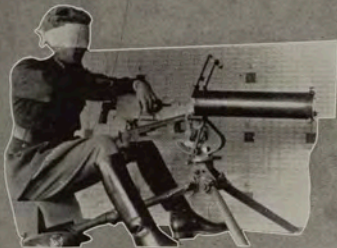
North and Corbin for women. Collegiana. Natural Science portal. U. S. C. students pay tribute to Montana gridders. His teeth are chattering. Midwinter. Front page.



A. S. U. M. polls on Aber Day. Student workers put on the nose bag. Shame on you Prexy. Don't take much stock in that. Warm it up please, Mister. Athletes improve the grid-iron and track. High court convenes.



La Guillotine. Aber Day's High Mogul, Manager Bill Rohlffs. Clean her up and haul her away. The Dean's girls. Police on the job. Is it art for art's sake? Faculty go into a huddle. Larry the lamp lighter and his assistants, with their paint pots.



Headquarters. Shoulder to shoulder . . . learning the tricks of the trade.
Company . . . attention!



Interscholastic track meet house decorations. Sigma Alpha Epsilon, first prize winner among fraternities; Alpha Chi Omega, first prize winner among sororities; Phi Sigma Kappa, Alpha Xi Delta, Sigma Phi Epsilon, Delta Sigma Lambda (second prize among fraternities), and Delta Gamma (second prize among sororities).

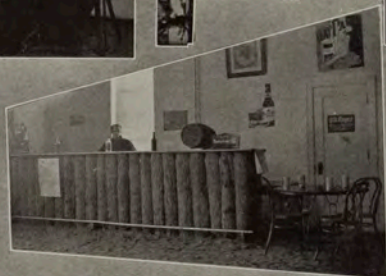


Contestants parade the opening day of the big meet. They're off! 100-yard jaunt. A new record in the broad jump. The warm-up of a long grind. No, he isn't taking a rest. On the up and up. Duncan breaks the tape for a first ribbon. Saylor takes an easy victory. Wet sophomores, and no more green caps.

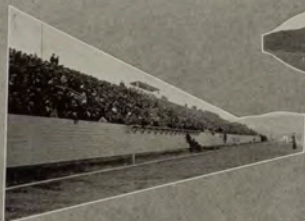


In memoriam. The School of Forestry building. Full pack and ready for the fire areas. Former Montana man directs fire brigades. On duty but time for a picture. A rattler ready to strike. Babe the Big Blue Ox rolls her hoops. Good morning, sir.

Photographs secured through the courtesy of Carter Quinlan.



The graceful arch of the Forestry building, Montana's newest edifice. Costume prize winners at the annual Foresters' Ball. Let's quaff a stein. Get away from those swinging doors. Dr. Schenck und fraulein. They even polished the rail.



**U.S.C.
TULANE**
*TICKETS ON
SALE HERE!*
SAT. FEB. 6

Smex, Grizzly mascot. A full house at the Grizzly-Cougar fracas. Old Sentinel as a prairie silhouette. Grizzly-Bobcat bands parade before the "big game" in Butte. When Smexy meets Prexy. Huddle. There'll be a hot time in the old town tonight. Keep your sunny side up. No gain.



The first huddle. A Montana range. Too bad, he was a nice boy. Just more campus.
The substitute. From the clock tower. Foresters' wood tester.

ACTIVITIES



STAGE

VARISITY VODVIL



GLEE CLUB

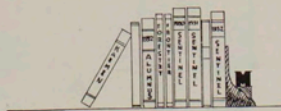


PUBLICATIONS



DRAMATICS

PUBLICATIONS





WALTER P. COONEY
Editor



HERBERT VERHEEK
Business Manager

The 1932 Sentinel Staff



TOM MOONEY
Associate Editor



FREDA McCAIG
Associate Editor



DICK SCHNEIDER
Assistant Editor



EDDIE ASTLE
Humorist



IRENE VADNAIS
Editor Book 4



JERRY ALQUIST
Editor Book 2





FRED STEINER
Sports Editor



ROBERT BATES
Artist



JIM NUTTER
Editor Book 1



PAT REGAN
Editor Book 6



JOHN DAHLIN
Asst. Business Mgr.



IDELLA KENNEDY
Assistant



STANLEY HILL
Assistant



MARGARET RAPPT
Women's Sports



1944

THE SENTINEL



FRED COMPTON
Assistant Editor



MICHAEL KENNEDY
Assistant Editor



KERMIT CARROLL
Circulation Mgr.



KATHLEEN HARRIGAN
Assistant



PHILIP PATTERSON
Art Assistant



MITCHELL SHERIDAN
Assistant



BETTY FOOT
Assistant



ALLEN COWPERTHWAITTE
Assistant





THOMAS MOONEY
Editor



JOEL OVERHOLSER
Business Manager

The Montana Kaimin

Since its beginning as a literary magazine in June of 1898, the Montana Kaimin, official publication of the students of the State University, has done much to shape campus opinion. Published twice a week, on Tuesday and Friday, it reflects current happenings of the student body and faculty.

Organization of the newspaper is divided into two phases—the editorial and business departments. Under the former comes the actual news gathering.



The Kaimin Staff





Putting out the Kaimin.

writing and editing. The soliciting of advertisements and their writing is confined to the advertising department of the publication, but the work in both divisions is accomplished entirely by staffs of students, the faculty of the School of Journalism acting only in an advisory capacity when called upon.

Printing of the paper is done by the School of Journalism Press, headed by C. W. Hardy. Mrs. Inez Abbott is instructor in the laboratory course in news writing which prepares copy for the Kaimin, and A. L. Stone, dean of the School of Journalism, instructs the newspaper administration class.

Prior to 1931 the editor of the Kaimin was elected by popular vote of the student body in the general A. S. U. M. elections held in the spring. In 1931 the measure was introduced and passed which delegated the appointment of Kaimin editor and business manager to Central Board, representative student and faculty body, upon the recommendation of Publications board. The latter group is made up of all the editors of all official publications on the campus.

The name "Kaimin" is the Selish word which means "a message," or, literally, "anything in black and white," and was submitted as a name for the paper in a contest held the year of its inauguration by Margaret Ronan, graduate of the State University with the class of 1902.

The Kaimin celebrated the completion of the first year of its printing at the Journalism "Shack" on February 20, 1932. The mechanical equipment of the school was donated by O. S. Warden of the Great Falls Tribune; Anaconda Copper Mining company; J. D. Scanlon of the Miles City Star; W. A. Sigorney of the Western Newspaper union. Billings: W. O. Ensign, Deer Lodge, and the Mergenthaler Linotype company, besides other Montana publishers who contributed materials and services.

Thomas Mooney, Missoula, and Joel Overholser, Fort Benton, have been editor and business manager, respectively, of the Kaimin for the year 1931-32.



Standing: Coon, Whitaker, Frykman.
Seated: Benson, Woolfolk, Beechel, Hawes.

Forestry Kaimin

STAFF

Joseph Woolfolk	- - - - -	Managing Editor
Kenneth Beechel	- - - - -	News Editor
Howard Coon	- - - - -	Business Manager
Richard Whitaker	- - - - -	Assistant Editor
Fred Benson	- - - - -	Assistant Editor

The Forestry Kaimin is the principal medium through which forestry alumni retain their contacts with the school, and students and faculty reflect their interest in the progress of the field.

Developing from a small pamphlet published first in 1915, the eighteenth edition has attained magazine size.

It reviews the activities of the school, including the traditional Foresters' Ball, the Rifle club, Forestry club and the skating rink which the latter sponsored this year. Druids and intramural sports have their place in the publication. Circulation and the directory of alumni were managed by Joel Frykman and Evans Hawes.

Pictures of wild life and scenic cuts emphasize the western atmosphere which the publication effects. Feature articles are illustrated with outdoor scenes, many of them taken in western Montana.



Joe Woolfolk





JESSIE CAMBRON



H. G. MERRIAM

Alumnus

The Montana Alumnus is published quarterly as the official organ of the Alumni association of the State University of Montana. Jessie Cambron has edited the Alumnus this year and last.

News of alumni sent in by class secretaries has resulted in the publication this year of a more complete class notes section than is included in any other alumni magazine received in the University exchange.

"What Alumni Are Doing" and "The Foreign Letter Bag" are included in the table of contents regularly. The Alumnus was the chief disseminator of plans and announcements for the 1932 reunion.

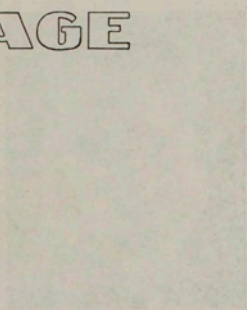
Frontier

Carefully selected literary contributions having the northwest as their background make up the Frontier, regional magazine, edited and published by Prof. H. G. Merriam, chairman of the Department of English.

High literary worth is required of the stories, poems, sketches and articles appearing in the magazine. Brassil Fitzgerald and Grace Stone Coates are contributing members of the editorial staff. Harvey Thirloway was circulation manager during the past year and Robert Blakeslee acted as business manager.

The Frontier has gained recognition throughout the country because of its merit and contribution to regional literature. During the past few years Edward J. O'Brien has included a number of stories from the Frontier in his annual collection of "Best Short Stories."

STAGE



Little Theatre

The Little Theatre movement is a result of the desire to have a more intimate and artistic form of drama. It is a reaction against the commercial theatre and the large, impersonal productions of the past. The Little Theatre is a place where the actor can be seen and heard, and where the audience can feel the pulse of the drama.

The Little Theatre is a place where the actor can be seen and heard, and where the audience can feel the pulse of the drama. It is a place where the actor can be seen and heard, and where the audience can feel the pulse of the drama.

The Little Theatre is a place where the actor can be seen and heard, and where the audience can feel the pulse of the drama. It is a place where the actor can be seen and heard, and where the audience can feel the pulse of the drama.

The Little Theatre is a place where the actor can be seen and heard, and where the audience can feel the pulse of the drama. It is a place where the actor can be seen and heard, and where the audience can feel the pulse of the drama.





WILLIAM ANGUS
Director

Little Theatre

Montana Masquers are completing their twenty-eighth year of activity and have as their record the production of approximately 150 plays of various lengths. During the last five years, campus dramatic productions have been directed by William Angus, whose resignation as assistant professor of English will be effective next year, when he leaves to begin work on his doctorate at the University of Iowa.

The Montana Masquers produced one major play each quarter of 1931-32. "Devil's Disciple," by George Bernard Shaw, given at the Little Theatre November 20 and 21, was the most ambitious production undertaken during fall quarter. Shaw glorifies the American rebels of the Revolutionary war in the witty and melodramatic vehicle.

Leading members of the cast were: Alice Taylor, Gene Manis, Leslie Pace, Fred Moulton, Ruth Bernier, Jeanette McGrade, Peter Meloy and Taylor Gardner. The play was taken to Butte, Bozeman, Helena and Hamilton, and served as the exchange play between the State University and the State College.

Three student-acted and student-directed one-acts were given October 29. They were: "Rich Man, Poor Man," "The Diamond Necklace" and "Confessional." "The Enchanted Hour," also a one-act, was produced March 10 on the same program with the Spanish three-act, "Sueno de Una Noche de Agosto," which was directed by Cecile Sughrue.

THE SUMMER



A scene from "Death Takes a Holiday"

"Death Takes a Holiday," major play of the winter quarter, was given at the Fox-Wilma theatre, February 19, for the benefit of the Alumni association. Delos Thorson gave a moving and impressive interpretation of the character "Death" who becomes a self-invited guest at a house-party in an Italian villa, the object of his visit being to find out why people fear and dread him. Jeanette McGrade, Ossia Taylor, William Brown were outstanding in their parts. Others in the cast were: Helen Fleming, Ruth Wallace, Gene Manis, Sylvia Sweetman, Radcliffe Maxey, William Angus, Arthur Roberts, Marian Hanford and Philip Miller.

Eugene O'Neill's play, "The Hairy Ape," staged April 7, offered an opportunity for variety of characterization that was well executed by the cast. Eddie Krause was outstanding in the role of Yank Smith.

"Bumblepuppy" by J. W. Rogers, directed by Ruth Bernier, and "A Wedding" by John Kirkpatrick, directed by Robert Busey and Eleanor Boles, were the two one-acts presented May 5.

"The Far-Off Hills" by Lennox Robinson was the major play for spring quarter. This Irish light comedy was given April 29 and 30. It was directed by William Angus and the cast included: David Duncan, Patrick Clancy; Betty Browne, Marian, his daughter; Kathryn Smith, Ducky, and Virginia Cooney, Pet, two other daughters; Ted Cooney, Dick Delaney; Grant Kelleher, Harold Mahone; Phoebe Patterson, Susie Tynan; Stanley Trachta, Pierce Hagarty. The play was well-received and served as a fitting climax to the productions of the year.



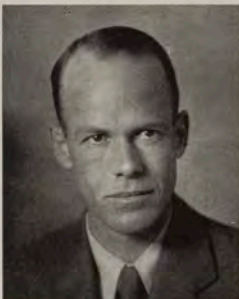
Top Row: Bolleau, Swango, Magnuson, Lanzendorfer, Rhude, Gullekson.
 Standing: Hoffner, Borge, Wickware, Farnsworth, Raquel, Sonstelle, Swanberg.
 Seated: Carnine, Thirloway, Foot, Larson, Kelleher, Alexander.

Debate

With increased student participation in forensic activities fostered by the Montana Debate union, the popularity of debate as an extra-curricular activity has taken great strides forward this year.

State University teams have encountered fifteen outside teams this year on the Pi Kappa Delta question:

Resolved, that Congress should enact legislation providing for centralized control of industry. Four traveling teams were entertained by Montana—a Turkish team from Robert college in Istanbul, Turkey; two representatives from the University of Pittsburgh; two from the College of Puget Sound, and a team from the University of Wyoming. Audience decisions in the first three engagements gave the visitors close victories. The Wyoming encounter was a non-decision debate.



DARRELL PARKER
 Debate Coach

The most extensive undertaking of the season was the 2,000-mile Pacific coast tour taken early in March by Grant Kelleher of Butte and Edward Alexander of Whitehall. This trip resulted in five favorable decisions, two losses and two non-decisions.



Standing: Allen, Hemgren, Pace, Roberts.
Seated: Metlen, Hawks, Kennedy, Harrigan, Bravo.

Hi-Jinx

COMMITTEE

Michael Kennedy	- - - - -	Manager
Emma Bravo	- - - - -	Assistant Manager
Kathleen Harrigan	- - - - -	Assistant Manager
Georgia Mae Metlen	- - - - -	Dance Chairman
Jerome Frankel	- - - - -	Stage Manager
Clifton Hemgren	- - - - -	Property Manager
Nat Allen	- - - - -	Song Director

A talented cast chosen from the entire student body played in "Son of a Gun," Hi-Jinx musical comedy produced at the Fox-Wilma theatre, December 5. More than seventy students participated in the 1932 production as members of the cast and choruses.

Helen Price took the leading role. Arthur Roberts, Richard Traxler, Marion Smith, Howard Gullickson and Anna Mae Crouse played major parts. Other members of the cast were: Al Rudolph, Crawford Beckett, Leslie Pace, Martha Kimball, Harold Stearns and Ruth Wallace.

There were three acts of comedy developing from the entanglements of an ex-cowboy "stunt" man in his impersonation of the scion of a wealthy New York family.

Hi-Jinx owes its origin to the State University band, its members staging an "All Nations Show" in 1906.





Men's Glee Club

The Men's Glee club made its first appearance of the year early in November with the presentation of a program in Dean DeLoss Smith's studio. Several public recitals were given by the club later. It presented two numbers at the convocation celebrating the bi-centennial of Washington's birth. It also sang with the Women's Glee club when awards were presented to the winners of Interscholastic Track events, and in combination with the Missoula Choral society at Commencement.

The club this year has been affiliated with the glee clubs of America and presented some of the numbers used by the associated clubs at their concert in New York City. Membership of the State University Glee Club increased considerably this year.

Members of the club and their positions follow: First tenor, Nemesio Borge, Alvin Rudolph, Robert Somerville, Earle Drost, John Sasek; second tenor, Robert Fetterly, Charles Johnson, Carl Lantz, Robert Wickware, Jack Jefferson, Arnold Peterson, Howard Rutherford; baritone, Dennis Rovero, Wilbur Wood, Raymond Smalley, Lewis Coriell, George Wilcox, George Dickel; first bass, Edward Carroll; second bass, Edwin McKenzie, Donald Aldrich, Richard Traxler, Joel Frykman, Eugene Hunton.



Women's Glee Club

The State University Women's Glee club has a personnel of more than thirty women representing the best vocal talent of the campus. Under the direction of Dean DeLoss Smith it presented a number of recitals during the year in combination with the Men's Glee club.

Its activities this year, in addition to the presentation of four recitals on the campus, included a program of songs given in Stevensville April 27. It entertained Track Meet contestants May 13 with several numbers when the winners of Interscholastic events received their awards. The two glee clubs united with the Missoula Choral society to provide music at the Baccalaureate service and the Commencement program.

The Women's Glee club this year is superior to any organized in previous years. DeLoss Smith, dean of the School of Music, is the director.

The personnel follows: First soprano, Mary Castles, Lura Jean Hunt, Martha Kimball, Frances Graves, Dorothy Dee Miller, Joy Browning, Ramona Noll, June Mason, Rogetta Perry, Ossia Taylor, Jane Stevenson, Helen Kelleher; second soprano, Annie Evans, Marion Hanford, Louise Kemp, Genevieve Krum, Ellen Shields, Gladys Avery, Harriet Gillespie, Rhoda Cougill, Jean Gordon, Esther Lentz; alto, Ruth Jones, June Hartley, Mary Brickson, Kathleen Dunn, Ruth Harris, Alice Helen Patterson, Martha Davis.



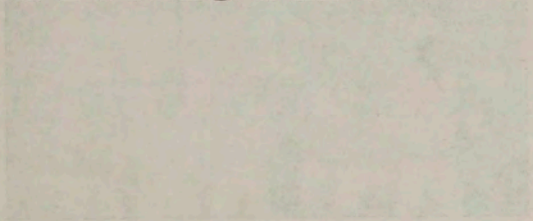
State University Band

The Grizzly band in uniforms of copper, silver and gold add color and harmony to State University athletic contests, rallies and R. O. T. C. parades. Forty-two selected band members led the parade preceding the Grizzly-Bobcat game in Butte and played a joint program with the Bobcat band on Clark field before the game. They joined the parade of Interscholastic contestants on Dornblaser field with the opening of the 1932 Track and Field meet and played during intermissions.

The Grizzly band, under the direction of Roy E. Freeburg, is recognized by State University students as an integral part of the majority of campus activities.

The personnel of the Grizzly band includes: Student leader, George Boyingdon; manager, Vernon Hoven; drum major, Sergeant Clarence Peterson; trumpets, Andreas Grande, Wilbur Hewitt, Fred O'Dell, Eldon Couey, John Purvis, Jack Robinson, Raymond Smalley; trombones, George Baldwin, Kermit Eckley, Philip Miller, Wesley Scott; clarinets, Lloyd Carmichael, Bill Clarke, George Dickel, Louis Gomavitz, William Hoskins, Curtis Hughes, Robert Johnson, James Parkinson; saxophones, Lloyd Bernhard, Charles Krebs, Robert Paterson; French horns, Dennis Rovero, Dudley Brown; baritone, Archie Kimpel; bass tuba, Edward Jeffrey; snare drum, Jack Bainton, Fred Compton, Phil Pollard; bass drum, Richard Farnsworth; flute, Jack Lewellen.

INTERSCHOLASTIC



Inter-Scholastic

The Inter-Scholastic Athletic Association is a national organization of high schools and colleges. It was organized in 1908 and has since that time been working for the improvement of the physical education of the youth of the United States. The Association has a membership of over 1,000 schools and colleges and has a total enrollment of over 1,000,000 students. The Association has a wide variety of sports and activities which are held each year. These include football, basketball, baseball, tennis, golf, and track and field. The Association also sponsors a number of national championships and has a number of other programs which are designed to promote the physical education of the youth of the United States.

The Inter-Scholastic Athletic Association is a national organization of high schools and colleges. It was organized in 1908 and has since that time been working for the improvement of the physical education of the youth of the United States. The Association has a membership of over 1,000 schools and colleges and has a total enrollment of over 1,000,000 students. The Association has a wide variety of sports and activities which are held each year. These include football, basketball, baseball, tennis, golf, and track and field. The Association also sponsors a number of national championships and has a number of other programs which are designed to promote the physical education of the youth of the United States.

The Inter-Scholastic Athletic Association is a national organization of high schools and colleges. It was organized in 1908 and has since that time been working for the improvement of the physical education of the youth of the United States. The Association has a membership of over 1,000 schools and colleges and has a total enrollment of over 1,000,000 students. The Association has a wide variety of sports and activities which are held each year. These include football, basketball, baseball, tennis, golf, and track and field. The Association also sponsors a number of national championships and has a number of other programs which are designed to promote the physical education of the youth of the United States.





Butte High School Team

Interscholastic

Butte public high school won the 1931 Interscholastic Track and Field Meet with a total of 17 $\frac{1}{3}$ points. Billings high school took a close second place with 16 $\frac{1}{3}$ points. Butte and Billings also placed first and second in the half-mile relay race which does not count in the final rating.

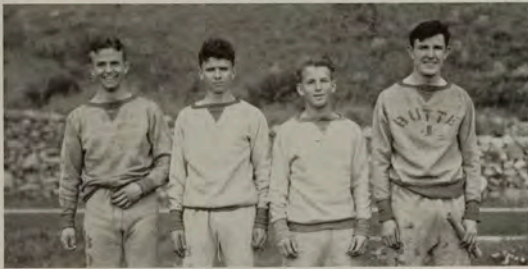
Hamilton of White Sulphur Springs was high point man with an individual score of 12 $\frac{1}{2}$ points; Maple of Belfry was second with 11, and Duncan of Billings, third with 10.

Four state records fell before Montana high school athletes last year. Peden of Custer county broke the state record in the 100-yard dash and clipped the 220-yard dash record to 22.4 seconds. Hamilton leaped 22 feet 3 $\frac{3}{8}$ inches for a new record in the broad jump, and Eldridge of Havre broke the old high jump record at 5 feet 11 $\frac{1}{4}$ inches.

Winners of the meet received a total of 70 prizes in 14 events. In addition to the Missoula cup given the winning school temporarily, Butte received the Rotary cup awarded permanently to the school winning the Interscholastic meet. Winners of first, second, third, fourth and fifth places in all track and field events were awarded gold, silver, and bronze medals, and colored ribbons respectively. Gold, silver and bronze medals were also carried off by the winners of the three high places in the golf tournament. Gold medals were awarded to three tennis victors—singles, and each of the doubles winners.



Hamilton



Butte High School Relay Team

Libby high school jumped into an early lead in the first day with eight points. W. Williams took second in both the shot put and the discus throw for his team. The points were sufficient to place him in individual honors for the first day.

George Varnell, sports editor of the Seattle Times, pulled the trigger for the sixteenth year at the Interscholastic.

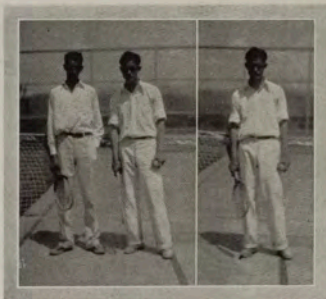
R. Saylor, Missoula, topped the 220-yard low hurdles in the phenomenal time of 25.6 seconds to beat the favorite of the day—Maple of Belfry. His time was not allowed as he knocked down two hurdles.

R. O'Malley upset R. Peden, the record-holder, in the century, winning in 10.2 seconds. R. Emerson's fifth place in that race elevated Butte high into the lead the second day which they never relinquished throughout the rest of the meet. The total amassed by the Purple Ponies—17 1/3 points—is the smallest total ever to bring a team into the Interscholastic Track and Field championship.

D. Duncan, Billings, winner of the half mile in the first race, took the lead at the start of the second lap of the mile run and held it to the end, finishing in 4 minutes 46.6 seconds. J. Rose challenged him on the home stretch but Duncan drove ahead to win.

C. Maple, Belfry, won the high hurdles in 16.2 seconds, again tying his own record for the event and repeating his victory of the year before. E. Popovich, Butte, added four points to the Purple's total with a fast stride between the sticks.

A long, apparently effortless stride which carried him past E. Miksch of Simms, on the last corner, won the second half mile race for J. Cornelius of Ronan. Exhausted by the terrific pace he had set in the first lap, Miksch could place no better than fourth.



Jacobs and Grantier

Grantier

Tennis

Bob Grantier, Missoula, by defeating Randolph Jacobs, also of Missoula, holder of the Interscholastic singles tennis title for 1930, won the 1931 championship. Grantier, champion in 1929, defeated Jacobs, 6-4 and 6-3.

Grantier and Jacobs composed the team which defeated R. Ormsbee and G. Plotts of Hamilton in the doubles contest, making Missoula the 1931 winner. The match was 6-3, 4-6, 6-3. Sixteen teams were entered in the doubles and 36 men in the singles.



Magner

Golf

G. Magner of Malta defeated R. Merhar of Butte, 1929-1930 Interscholastic golf champion, in a closely matched race for the championship golf ribbon on the State University course May 15. Magner's score for 36 holes was 161 and Merhar's 162. J. Skedd of Butte took third.

Harry Adams was in charge of golf and tennis tournaments.



Kalispell wins the theatre contest.

Little Theatre Tournament

Flathead county high school won the fifth annual Interscholastic one-act play contest for the second successive time with its presentation of "The Giant's Stair" by Wilbur Daniel Steel. Second place in the 1931 tournament went to Anaconda high school. Anaconda also placed second the previous year. Flathead county high school retained the Montana Masquers' cup which goes to the winner of three successive contests. It also received a cash award of \$25 and expenses of the cast. Silk banners were presented by the Montana Masquers to the four schools competing in the finals, including Butte public high school and Whitefish high school.

Helen Peterson of Kalispell, playing the part of Til, a mentally-deranged farm woman, in "The Giant's Stair," was chosen the best actress of the tournament. Honorable mention for their performances was accorded Marcia Sheltenbarger of Anaconda, Mary Rowland of Kalispell, and Ruth Perham, Butte.

Edward Kretzer, Anaconda, in the role of Daniel, received the gold medal award as best actor, and Darrel Dickey, Kalispell, was given honorable mention.

Schools entered in the contest were: Hamilton, Missoula, Sacred Heart Academy (Missoula), Corvallis, Anaconda, Billings, Thompson Falls, Libby, Whitehall, Lewistown, Bozeman, Geraldine, Belgrade, Whitefish, Kalispell, Fort Benton, Big Timber, Butte and Belt.



Helen Peterson



Edward Kretzer



Missoula County High School Paper

Editorial Association

"The Konah" of Missoula county high school was awarded a silver cup as the winning newspaper in Class A of the 1931 High School Editorial association contest. "The Kyote" of Billings high placed second, and the "Iniwa," Great Falls, third.

"The Centralite" of Girls' Central, Butte, was judged first in the Class B section for newspapers representing schools of 300-500 enrollment. The Class C award was won by "The Anticline" of Baker, and "The Crazy Mountain Monitor," published at Clyde Park, won the Class D award for mimeographed sheets. The four winners in the newspaper contest received silver cups presented by the Montana Press association and by Sigma Delta Chi and Theta Sigma Phi, journalism fraternities.

More than eighty delegates from the editorial staff of high school newspapers attended the sessions of the Montana Editorial association May 14 and 15. Copies of the Montana High School Editor, official publication of the organization, containing hints on make-up and news of the high school activities throughout the state, were distributed.

Essay Contest

Mary Asbury of Hardin won the Interscholastic essay contest conducted by the Department of English with her essay on Indians, entitled "Crows." She was awarded a scholarship by the State Board of Education upon recommendation of the State University faculty and was presented with a gold medal offered by the State University.



Hoffner

Taylor

Declamation

Ossia Taylor, representing Missoula county high school, won the girls' declamatory contest May 14, giving "The Death Disk" by Mark Twain. Harry Hoffner, Butte, placed first in the boys' division with "Submerged" by Cottman and Shaw.

Ruth Skillingstad of Powell county high school placed second in the girls' section. Eugene Manis, Hamilton, was second in the boys' declamatory contest. Judges for the final contest were Mrs. R. H. Jesse, Mrs. W. G. Bateman, and Prof. W. P. Clark.

Debate



Pace Speck

Whitehall high school, represented by Jack Pace and Carol Speck, won the Interscholastic debate championship. They defeated the Lewistown team, composed of Bessie Harrison and Peggy Marshall. The teams used the cross examination style of debate in the rebuttal. Jack Pace was awarded the Dixon medal for the best individual debator. The teams debated the "Chain Store" question.



Jack Pace



Standing: Loftsgaarden, M. Kennedy, L. Kennedy, Hendon, Curtis, Crego, Warden, Barnes, Blakeslee, Evenson, Sanders.
Seated: Breen, Connolly, Greene, Shallenberger, Gaughan, Coe, Bravo, Borders.

Students' Interscholastic Committee

Members of the Students' Interscholastic committee are selected by members of the Faculty Interscholastic committee to co-operate with the larger group. T. C. Spaulding, dean of the School of Forestry, who has for the past 11 years been responsible for the group's activities, resigned the position in 1932. His successor was Dr. G. D. Shallenberger, chairman of the Department of Physics. He had as his duties the supervision of the housing of all visiting men contestants. Paul Bischoff, instructor in the Department of Foreign Languages, assisted him.

Charles Gaughan was chairman of the student committee and Hazel Borders acted as vice chairman.

The campus decoration group had the work of decorating the campus and directed the erection of the grove on the oval. Robert Blakeslee headed the committee. Other members were Leland Kennedy, Millard Evenson, Clyde Crego and Curtis Barnes.

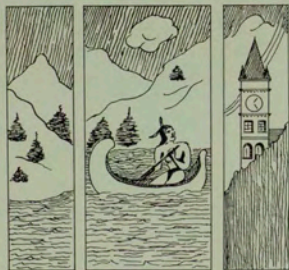
House decorations committee was under the chairmanship of Owen Loftsgaarden. He had the assistance of Horace Warden, Virginia Connolly, Mary Breen and Emma Bravo.

John Curtis was in charge of publicity, with Michael Kennedy assisting. Spur and Bear Paw, sophomore honoraries, had the duty of meeting all guests and transporting them to their places of residence during the meet. Lina Greene, Spur president, was assisted by Kathryn Coe.

Bob Hendon, A. S. U. M. president, and Claget Sanders, Chief Grizzly of Bear Paw, directed the work of Bear Paw.

ADVERTISING

STATE UNIVERSITY



HEART OF THE ROCKIES





The Life of Peter Zwilt

Together with a Searching Investigation of His Letters
and Love Life

I

BACKGROUND

The clever use of a young lady's tongue in a game of postoffice is said to have started the romance which culminated in the marriage of Peter Zwilt's mother and father.

Horatio Zwilt was a struggling young blacksmith, but gave up the struggle on May 13, 1907, when his marriage to Blossom Blotz was recorded in the big book kept by the sexton of the First Church of the North Side in Buffalo. The sexton later wrote to his brother in Utica (from *Sex Lives of Sextons*):

"We had a charming funeral here

today, except that our pastor (George Rumph, 1879-1920) slipped in the mud and fell into the grave, causing a little delay. His frock coat got all muddy in back and it cost \$1.50 to have it cleaned."

The sexton, as can be seen from his letter, was not given to fabricating stories, so it is probably true that Blossom and Horatio were really married and the sexton wasn't just fooling. Why the sexton's brother moved to Utica is not known, but it has been established that he left Buffalo rather suddenly sometime in April, 1907.

Horatio Zwilt and his young Bride

This Page

Contributed by **MISSOULA MERCANTILE Co.**

For Student

Autographs

The
**Peterson Drug
 Company**

Specialize in highest quality products

Agents for

**DOROTHY GRAY FACIAL
 PREPARATIONS**

HOUBIGANT'S, CIRO'S, COTY'S
 and YARDLEY'S PERFUMES. etc.

WHITMAN'S FAMOUS CANDIES
 WATERMAN'S FOUNTAIN PENS

EATON, CRANE AND PIKE
 STATIONERY

Monograms, Crests, etc., die-stamped on
 stationery, and programs.

Beauty



**BARBARA'S
 VANITY SHOP**



Cosmetics

1st Nat'l Bank Bldg. MISSOULA

S
P
O
R
T
T
O
G
S



D
R
E
S
S
W
E
A
R

For University Men
The Sport Shop

returned from Niagara Falls and set up housekeeping somewhere down on 43rd street. It was in that very house that Peter Zwilt was born, February 3, 1908.

Other relatives of Peter Zwilt are hard to find. There was a Lief Zwilt who lived in Albany, but he was hanged in 1873 and had never known Blossom Blotz or Blossom Zwilt, so it is doubtful if he had anything to do with Peter Zwilt.

II

EARLY ASSOCIATIONS

Of Peter's youth and early education, little is known. His father moved to Burlington, Iowa, while Peter was yet a small boy and though we have no record of his leaving there, we know he did, because he spent several years in Leavenworth and he would have found that impossible, had he remained in Burlington. There is also a record

The Most Centrally Located Logical Meeting Place

FLORENCE HOTEL

Private Rooms for Parties of Ten to Two Hundred



Seasonable food carefully prepared.
Most reasonable prices.

Courteous, attentive service throughout.
Dressing rooms and parlors.



Bozeman's Beautiful New Hotel Baxter

Under the Same Management

For Reservations Phone
R. B. MacNAB

of a shipment of household goods consigned to Horatio Zwilt at Ogalalla, Nebraska (pop. 1910: 643), where a claim is on file for damage to a easter of a dining room table. A letter to the claim agent of the railroad is signed "H. Zwilt" and the signature bears remarkable resemblance to the signature in the time-book in the blacksmith shop in Buffalo where Horatio was once employed.

Mr. Zwilt said: "Please cancel my claim for damage to the easter on my dining room table. I have found that a piece of two-by-four supports the table quite well."

The letter was short and businesslike. Not a word did Horatio say of the precocity of his son, Peter; not a word of his heartache and longing; not a word that indicated any emotional attraction for a blonde across the street. Horatio

Herrick's
FAMOUS
ICE CREAM

Western Montana's Pride



At your neighborhood store

At your cafe

For your party

For your banquet

ASK FOR

**HERRICK'S FAMOUS
ICE CREAM**

and you can't go wrong. Our quality and service have given our ice cream the popularity it has always enjoyed.

SHOES---

For—

SPORT
STREET
DRESS

DIXON & HOON

133 Higgins

— QUALITY —

Stationery

Drugs

Cosmetics

A PRESCRIPTION STORE

You can always save money
at your Walgreen System
Drug Store.

Public Drug Store

Florence Hotel Bldg.

MISSOULA, MONTANA

N. B. MITHUN

BOB HARPER

PHOTOGRAPHS
that
LIVE



**MELANDER
STUDIO**

PHONE 3729

612 So. Higgins Ave.

MISSOULA

::

MONTANA

Zwilt was like that; seething with emotion internally, but never giving it voice, not even to the claim agent. There is no indication that a blonde ever lived across the street from Horatio, although the Ogalalla city directory shows a Mrs. Griggs living in Ogalalla during that decade. She later wrote to her niece in Fargo (Author's Scrapbook):

"Charlie has the mumps and I must keep him indoors. The weather has been quite disagreeable lately."

Charlie, to whom Mrs. Griggs lovingly refers, was probably her step-son, Charles Glugson, who was imprisoned in 1926 for robbing graves. No mention of the Griggs family appears in Peter Zwilt's later writings.

Probably the first of Peter's writing was done in Ogalalla, where a note was found among his school books. "Jo-

EDGEWORTH

SMOKING TOBACCO



"The Smoker's Diploma"

LARUS & BRO. CO.

Since 1877

RICHMOND, VIRGINIA

seph Glotz loves Mabel," was all the note said, but it shows an early tendency toward keen observation and an irrepressible desire for self-expression.

III

EDUCATION (EARLY)

Shortly after Peter's parents moved to Montana (1920), his literary career began in earnest. It is indeed a far cry from his first writings in Ogalalla to the poem he handed to his language teacher in Montana upon the occasion of his being allowed to sit beside Dorothy Dee:

I wish I were a robin;
I'd flit from bough to bough,
And pour sweet music to the wind
To charm our bossy cow.

Some critics have pointed out that, as this poem was written shortly after Christmas, Peter probably copied it

Missoula Drug Company

THE REXALL STORE

Elizabeth Arden Preparations
Guerlain and Corday
Perfumes

Fine Candies

-:-

PHONE 3171

Free Delivery

HIGH GRADE PIANOS

The New
RCA, VICTOR and
PHILCO RADIOS
with
Electrola

-:-

Headquarters for
Teaching Material for the
State University of Montana

DICKINSON PIANO CO.

218 Higgins Ave. Missoula, Mont.

Memory, Travel and Diary Books

FOR THE GRADUATE

Greeting Cards and Gifts,
including the ever useful

PORTABLE TYPEWRITERS



The Office Supply Co.

Florence Hotel Building
Student Headquarters

Blue Green Hart Gas---

Thurmar Motor Oils
H. R. Golden Motor Oils

Three Fully Equipped Service
Stations located at

South Higgins and Sixth Sts.
North Higgins and Alder Sts.
North First St. and Wolf Ave.

"A Local Industry"

Hart Refineries

Buy at the stations with the sign of the
RED HEART

from Horatio Alger, Jr., who has a similar poem, but to the lover of beautiful things, it only indicates how subtle Peter's perception was. Of course, "bossy" might have been replaced with "pensive," but it has not been established as yet that the Zwillt cow was at all pensive.

IV

EDUCATION (NOT SO EARLY)

Except for an occasional poem of doubtful merit and morality, we are unable to find where there was any literary activity on the part of Peter Zwillt until he finished high school. One of his aunts was married to Felix Glunt and was the recipient of several letters from Peter, but while a few of them have intrinsic worth, the others are merely written for the purpose of establishing friendly relations at Christmas.

You're Right Pop.

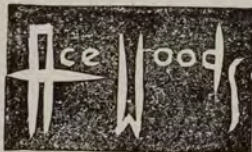
One day we were taking a picture of a University student and his father. We suggested that it might make a good picture for the boy to stand with his hand on his father's shoulder. The father replied that it would be much more natural for the boy to stand with his hand in the father's pocket.

But just the same Dad don't forget that college days are the ones that will be remembered in the years to come.

We hope that we have aided in preserving these memories by faithfully portraying campus life with the camera.



115 E. Higgins



Near Wilma

STYLED FOR Campus Wear Brownbilt Shoes



BROWNBILT SHOE STORE

BUSTER BROWN SHOES

To his maiden aunt, Letta Zwilt, he writes: "You don't know what you've missed." Peter was speaking of a birthday party he had attended recently. It was shortly after this that Peter Zwilt entered the State University.

V COLLEGE LIFE

Of his freshman year in college, Peter later wrote to his cousin: "I was really too young and didn't know much. I wish I had known what I know now." Here he has voiced the inarticulate wish of generations and generations of college men; he has given tongue to that elusive phrase for which collegians have been groping for centuries. To Peter was left the distinction of putting it into words.

It was during his freshman year that

FOR GOOD WORK

and

Five Hour Service

send it to the

Master Cleaner and Dyer

Montana's best equipped cleaning and
dyeing plant

PHONE 2186

205 W. FRONT

We Call for and Deliver

Leaven
the future
with ambition
and optimism

Eddy's Bakeries

Helena

Butte

Missoula

Great Falls and Lewistown



Official AAA Service

Always Open

Storage Our Specialty

Wrecking Car Service

Repairs

STAR GARAGE

W. W. WICKES, Prop.

MISSOULA

:

:

MONTANA

he read Kelland, who, as he confessed
years later, made him

See through things that seem

So commonplace;

Beneath a Eugenie hat,

A pretty face.

Very little of Peter's actual college
life is of much interest. A few ro-
mantic moments were probably experi-
enced, but from his letters we gather
that life was a little dull. He writes
of (Author's Collection) "standing
upon the bridge at sunrise, drinking in
the beauty of the early morning." Lit-
tle did Zwilt know that the beautiful
Miss Binx was standing on the other
bridge at the same time, but she was.
She was not, however, doing any drink-
ing; she had done her drinking in the
magic hours of late evening and it is
doubtful that, had she raised her head,
she would have even seen the sunrise.

Don't Just Ask For

BUTTER, EGGS
or ICE CREAM

Insist On

Sentinel
BRAND

and be satisfied

Sentinel-Missoula Creamery, Inc.

MISSOULA, MONTANA

PHONE 3131

BUTTE CLEANERS

"Kleaners that Klean"

506-8 South Higgins Avenue

All Work Absolutely
Guaranteed

Order Your Suit

Merchant Tailored to Measure
Student Stylists

STEIN & SON

Peter didn't know this, either, and it probably wouldn't have made any difference if he had. Miss Binx and Mr. Zwilt had never even met, and probably haven't yet.

"Just because I didn't know that Hawthorne didn't write anything while he was surveyor of the Port of Salem, I can't be initiated. * * * I feel somewhat perturbed about it," writes Peter to a girl in East Helena (Neart's Collection). The girl never answered.

VI

WHAT HAVE YOU?

There were moments, we feel, when Zwilt displayed remarkable insight into the workings of things. In a letter to his cousin, George, who later moved to Meaderville, he says (Some Collection or Other): "Some day, George, someone will dig up a portion of my skull

FLORENCE HOTEL
Barber Shop

The well groomed man
or woman possesses a
distinct advantage in
our competitive world.

Let us aid you.



We specialize in student hair-trimming
for men and women.

Remodeled

Redecorated

Hi-School Candy and Cafe
837 So. Higgins

Next to home this is the best place
to eat

PAPANTONY & JOHNSON, Proprietors
Soda Fountain Sundries

CORRECT STYLES

For
COLLEGE MEN



DaCo HAM

DaCo BACON

John R. Daily, Inc.

115 West Front

Phone 2181

Packers of

DACO

MEAT PRODUCTS

Service and Quality

Branches

MODEL MARKET

309 N. Higgins—Phone 2835

MISSOULA MARKET

126 No. Higgins—Phone 2197

DaCo LARD

FRESH MEAT

about the size of a six-bit piece and
the scientific world will be in another
uproar. * * * I shall be classified as
Collegianthropus Missoulianensis and
they will be able to tell all about me;
that I liked blondes and two lumps of
sugar in my tea and brunettes. * * *
Artifacts discovered will indicate that
my watch needed cleaning and that I
owed a cleaning bill of a dollar. * * *
Truly, science is a wonderful thing."

Just why Peter wrote such a letter
to George has never been determined.
Certainly, not for the edification of his
cousin, for his cousin could not read
and besides, Peter put the wrong ad-
dress on the letter and George never
got it. People have never really under-
stood poor George.

Peter's class attendance was erratic;
he spent enough time at University to
get two or three college degrees, but

The Western Montana National Bank

MISSOULA, MONTANA

Extends its support to

THE SENTINEL

B^{and} H Jewelry Co.

Fraternity
Jewelry
Costume
Jewelry

he was more interested in degrees Fahrenheit and the women who had them. To say that Zwillt did not get an education would do him a grave injustice. His education was a broad one. He probably knew more about broods than any of his contemporaries, and although his grades were not as high as some, we have reason to believe that he made them oftener.

When the faculty members finally granted him a diploma they were fully aware that he had learned many things that they couldn't teach him; that he knew more practical psychology than a psyche major; that he was more familiar with the library than any faculty member; that he knew more about eyes, ears, noses and throats than a specialist and more cures for different ailments than a doctor.

Zwillt was credited with knowing

WE SOLICIT YOUR
PATRONAGE ON

La Dez, Webster, Havana Sweets and
Cinco Cigars

Hoffman's Box Chocolates.

CALIFRUIT Lime Rickey.

Coca Cola, Orange Crush, Bluebird,
Hires and other Majestic Bottled Bev-
erages now sell at 5c in sterilized
bottles.



We Make Fruit Punch for
Parties

Phone 3352

We Deliver

Missoula

Laundry Co.

111-121 E. Spruce St.

Dry Cleaners

Hat Blocking

Rug Cleaning



PHONE 3118

SMITH'S DRUG
STORE

—and—

SOUTH SIDE
PHARMACY

PRESCRIPTIONS

Columbia Portable and Latest
Records

DEVELOPING FREE WITH
PRINTING

Eastman Kodaks and Kodak Supplies
Stationery and School Supplies

more mixtures than a chemist; more
about a dark room than a photogra-
pher; more about souls than a shoe-
maker; more about holds than a wrest-
ler and more about the proper time
than a watchmaker.

Although Peter was master of many
arts, he was granted only the bachelor's
degree, which he still holds. His last
words were: "Education is truly a
wonderful thing. I wish I had more
of it." (Author's Collection).



Electric Service

*We Aim to Serve
the Public*

EFFICIENTLY
ECONOMICALLY
COURTEOUSLY



Steam Heat

Water

*The Montana Power
Company*

Associated Students' Store

Students' Headquarters

for their

Fun – Rest – Gossip – Eats

and

School Supplies

THE CO-OP

ON THE CAMPUS

The Place of Good Fellowship

“CLOROX”

GENERAL DISINFECTANT
AND DEODORANT

Keeps Lockers Fresh



May be had at

Any Grocery or Drug Store

A help in washing, easy on the hands
and removes nicotine stains.

Schramm-Hebard Meat Co.

Choice Meats

Poultry, Fish and Oysters

Our Special Pure Pork Sausage
is Delicious



PHONE 3191

417 North Higgins Avenue

MISSOULA

MONTANA

ODE TO CANOPENER

Blessings on thee, hunk of steel,
Essential part of every meal,
With thy gadgets nicely placed
To slaughter fingers moved in haste;
Bride's first meals would all be flops
Without your help removing tops;
To marriage, you're the one solution,
Keeping it an institution.

Even in a bachelor's place
It's nice to see your crooked face
And know you'll be quite handy here
In case we get a case of beer.
Your corkscrew, too, is mighty nice,
Uncorking gin or chipping ice.
Your work is piled for you in stacks
From splitting wood to driving tacks.

You open up the morning milk
And do the job as fine as silk,
You keep the cream from flying high,
You keep the walls and ceiling dry;
You stir the soup, amuse the kids,
Remove the most reluctant lids;
In fact, it isn't home at all
Without you hanging on the wall.

ASK FOR

Golden Glo Dairy Products



BUTTER ICE CREAM
COTTAGE CHEESE
BUTTERMILK
MILK and CREAM

When giving a party serve

Golden Glo Ice Cream

We make special orders and designs



Golden Glo Creamery

CONSOLIDATED DAIRIES



Pure Pasteurized Milk
and Cream

Early Deliveries



PHONE 2977

The First National Bank of Missoula

Established 1873



OFFICERS AND DIRECTORS

A. R. JACOBS, President

D. C. SMITH, Vice President

H. R. GREENE, Vice President

THEODORE JACOBS, Cashier

E. R. ANDERSON, Assistant Cashier

S. J. COFFEE

HOWARD TOOLE

WALTER L. POPE



(Montana's Oldest National Bank)

Safeway Stores, Inc.

Distribution Without Waste



Quality Merchandise

at

Saving Prices

with

an extra measure of cheerful happy
service

Missoula Coal and Transfer Co., Inc.

LOU ELLINGHOUSE, Pres.

R. G. LAING, Secy.-Treas.

HOW IS YOUR COAL PILE?



COAL and WOOD



110 East Broadway

PHONES 3662 and 3630

FOR THOSE YET TO COME

Pioneers fought in heat and cold
And drought and mud and wet;
They worked like snails to blaze their
trails,

Then packed them down with sweat.
They bled and died, but still fought on
So you and I, now they have gone,
May ride in cars and gaze upon

Wayside filling stations, refuse of Sun-
day picnics and mountain scen-
ery dotted with cigarette adver-
tisements.

Thoughtful men and women planned
And worked with goal in view;
With mental toil and midnight oil
They built Montana's U.
Beneath a smoky kerosene light
They thought and labored through the
night

So children of their children might
Sleep through classes, carve initials on
desks, eat fraternity and dormi-
tory grub and let traditions die
unmourned.

Grizzly teams ploughed mud and snow
In gridiron fights of old;
They'd bleed and die to hold on high
The Copper, Silver, Gold.
With grit and sweat they paved the way
For Grizzly football squads today
So you and I, their children, may
Sit in the bleachers and razz our play-
ers, organize discussion groups
where flat-chested individuals
moan that football undermines
our educational system and go
to the Bobeat game just to put
on a party.

Youngren Shoe Shop

The College Shoe Re-builder
RAY P. WOODS



DYEING HEEL PLATES

General Shoe Re-building

NEW HEELS DANCE TAPS

"Thin Soles that wear a long time"

Basement of Higgins Blk.

We Deliver

Food Which Pleases

the most epicurian taste,
with a wide range of choice
from rich, creamy malts,
all-juice process hamburg-
ers, tasty toasted sand-
wiches to delicious home-
made pies and cup cakes.
We invite your patronage
and your friendship.

'Tis the Taste
That Tells

THE
Sandwich Shop
--ramey's

Tomorrow's Memories

All of us are more or less inclined to "try anything once" but we have long memories for unpleasant after-effects.

Our organization knows that, so we try earnestly to leave you a pleasant recollection of our work, prices and service.

The Missoulian Publishing Co.

PHONE 2162

MISSOULA

MONTANA

QUINN'S BAKERY

Wholesale and Retail

ROYAL CREME BREAD

Special orders receive prompt and
careful attention



PATRICK QUINN, Prop.

531 South Higgins

Phone 3722

Our Three Prides



Sanitation
Courtesy
Service



TAYLOR & HILL BAKERY

131 E. Broadway

Phone 3388

ENNUI

If you don't mind my confession,
I'm tired of this depression,

And I wonder how we ever did en-
dure it.

But the things that really tire me
Are the talks that should inspire me

To a spending orgy guaranteed to
cure it.

There's a Communistic stir-up
Every day or so in Europe,

But my temperature remains about
the same.

I can't seem to get excited
If our foreign consul's slighted

By the soldiers of old General
What's-His-Name.

Not a one of Herbie Hoover's
Dire political maneuvers

Can arouse a bit of Bourbon wrath
in me.

Though Chicago crime's uncurbed,
I can sleep on undisturbed;

I stay just as calm as anyone can be.

But show me some blonde baby
With a look that says: "Well, maybe."

And the damage to my peace of mind
is done.

She may be minus brains,
But her type entertains;

I may be queer, but still I think it's
fun.

Delicious Wholesome Foods for all
Occasions

DANCE AND DINE AT

The Chimney Corner

540 Daly Avenue

Across from Corbin Hall

PHONE 6001

Afternoon Parties Banquets
After-Theatre Refreshments

Fashion Club Cleaners

The best of Service. You
will always find our serv-
ice modern and up-to-date.
You deserve the best.



PHONE 2661

J. R. Nagues, Prop.

525 South Higgins Ave.

Anaconda Copper Mining Company

LUMBER DEPARTMENT

Mills at Bonner and Milltown, Montana

Manufacturers and Wholesale Distributors

of

**PONDEROSA PINE AND MONTANA FIR
AND LARCH LUMBER**

We make a specialty of sixteen-inch mill wood that can be favorably distributed in a radius of about one hundred miles from our mills.

SHOP AT

McCracken

—Stores—

Every Day is a Sale Day

ALWAYS!

A Good Show at

the

FOX - WILMA

FOX-RIALTO

THEATRES

E. K. TAYLOR, Manager

COMPLETE LINES

of

Whitman's Candy

and

Eaton Crane & Pike

Stationery

HARKNESS DRUG

STORE

Cor. Pine & Higgins

Missoula

PIPES O' PAN

When I was but a little boy,
Father's pride and Mother's joy,
I decided I was made
To follow up the plumbing trade;
And though I've wandered far away
From youth's first love, I find today,
That back those old ambitions come
Whene'er I see a plumber plumb.

Every other walk in life
Is full of trouble, strain and strife;
Every one of us must use
Care in minding P's and Q's;
While one who plumbs is free from
care,

Simply piping here and there,
And unlike ours, his conscience tells
Him merely mind his tees and ells.

I think I'm probably a fool
For not attending plumber's school.
A college class so often gripes,
While plumbers' courses all are pipes.
Instead of learning psych and lit,
I'd now be making fittings fit
And starring in those bathroom scenes
They show in humor magazines.

Though now I tread a different path,
I hear the siren call of bath
That bids me grab a wrench and go
Leading water to and fro;
But since I've made my final choice
I must ignore that piping voice,
And hope that in the world to come
I'll finally get my chance to plumb.

Say it with Flowers

for

ALL OCCASIONS

Home-Grown Flowers



Borg Jewelry

and

Optical Co.

Watches

Jewelry

Diamonds

EYES EXAMINED
GLASSES FITTED

OVERWORKED—

That little word "Service" so frequently used and so often abused by modern business, most assuredly labors under a peak load. Despite the admitted truth of this statement, the

CENTRAL FUEL and BUILDING SUPPLY CO.

still contends that "Service linked with Quality Merchandise" remains the only guarantee of assured satisfaction.

Best Brands of Montana,
Wyoming and Utah Coals.

Builders' Specialties for
the Ultra-Modern Home.

136 East Broadway

MISSOULA

PHONE 5258

MILLINERY

HOSE

Mary Moore
SHOP

Garments of Refinement

Hotel Florence

PAJAMAS

LINGERIE

THE INTERLOCKING GRIP

Love, it seems, on close inspection,
Is lots like golf—a spring infection:
A crowded course each afternoon,
A crowded car beneath the moon.
We drive and dub at golf each day
Then lie and love our nights away,
Practice each sport more and more
In hopes we may improve our score.

It makes no difference where you are,
What kind of course, what make of
car;

In fairway, rough, sedan or coach,
A heap depends upon approach.
Success will come your way if you
Will only learn to follow through,
You never need to fear the rough
If all your lies are good enough.

Are You Broke

or is it

YOUR WATCH

C. L. WORKING

"Always Working"

FIRST—WITH SMARTEST STYLES

We Invite
Your Charge
Account

DONOHUE'S

REMOTE CONTROL

Winter's gone and poets sing
Blissfully concerning spring;
They hymn of birds and flowers and
trees,

Forgetting irate bumblebees,
Blistered backs and sunburned faces,
Refuse-dotted picnic places,
Big black bugs and busy ants,
Slimy mud and grass-stained pants.

Poets never seem dismayed
At gnats that drown in lemonade,
Or flies who die within the jar
Where all the luncheon pickles are.
In fact, I don't think poets fall
For Sunday picnic jaunts at all;
They stay close by the frigidaire
And do their rhapsodizing there.

HEADQUARTERS

For

FLOWERS

For

Receptions, Teas, Corsages



DEPENDABLE

Laundry Service

**FLORENCE LAUNDRY
CO.**

Dial 2302

MY BEST WISHES ALWAYS

To the Faculty and Students of, and Every One Connected with

OUR UNIVERSITY

FRANK POOLE, Proprietor of

THE MISSOULA CLUB

139 West Meighn Street

Phone 4205

BEVERAGES CANDIES CIGARS CIGARETTES TOBACCOS
DE LUXE HAMBURGER SANDWICHES

Your patronage is solicited and will be appreciated

HI-POWER GASOLINE

Means

GREATER SPEED AND POWER
TO YOU

So

“Fill 'er up”

At

Clack's Service
Station

2nd Ave. North 9th St.

Great Falls, Mont.

JOE FREY, Manager



COMPLIMENTS OF

Arizona Cafe

BUTTE

MONTANA



McKAY ART CO.



KODAKS FILMS

MOVIE CAMERAS

Developing and Printing

BOURDEAU
MERCANTILE CO.

Incorporated

Fair and Courteous Treatment to All

833-839 Higgins Ave.

PHONE 3194

MALLORY
HATS

FLORSHEIM
SHOES

Yandt's
MEN'S WEAR
Next to Shapard Hotel

BOURDEAU
MEAT MARKET

W. WERNER, Prop.

Where Quality and Service is the
Keynote.

835 So. Higgins Ave.

PHONE 3766

“Our Fish Are Always Fresh”

THE NOBLE RED MEN

We dedicate this verse
To the men who've known the curse
Of having facial blood become con-
gealed;
For nothing quite so crushing
As a tendency toward blushing
Has ever yet to menfolks been revealed.

This sudden vasomotion
Is caused by some queer notion
That perhaps you look as silly as you
feel,
And when you start to thinking,
You mechanically start pinking;
Your supposition then is true and real.

The simple blushing brides
Disappeared with buggy rides
And tandem bikes and braids some
years ago.
Maybe, some way, we could rake up
One who'd blush behind her makeup,
But even then, we doubt if it would
show.

On a girl, a blush is sweet,
But it's somewhat obsolete
And fills its place in memory's hall of
fame;
But the men will carry on
Until the race is gone;
Male ears will flaunt the crimson just
the same.

DINE AND DANCE

— at —

The Corner Cafe

MEADERVILLE



Italian Dinners

Phone 2-4019 for Reservations

Compliments of

F. & W. GRAND SILVER
STORES

BUTTE, MONTANA

Compliments of

FRANK WARD

Printing

Binding

BUTTE

MONTANA

Metals Bank & Trust Company

BUTTE, MONTANA

Identified with Montana's Progress since 1882

INTEREST ON SAVINGS ACCOUNTS

Member Federal Reserve System

OFFICERS

JAMES E. WOODARD, President

JAMES T. FINLEN, Vice President

JOHN L. TEAL, Assistant Cashier

RALPH W. PLACE, Cashier

JOHN J. BURKE, Assistant Cashier

B. F. STRANAHAN, Assistant Cashier

DIRECTORS

CHARLES J. KELLY, Chairman of the Board

JOHN D. RYAN

J. BRUCE KREMER

JOHN E. CORETTE

CORNELIUS F. KELLEY

FRANK M. KERR

HARRY A. GALLWEY

THOMAS A. MARLOW

J. R. HOBBS

JAMES T. FINLEN

JAMES E. WOODARD

Affiliated with

FIRST BANK STOCK CORPORATION

Any time you
wish to get
into a

Good Eating Place

if you have the
opportunity
call at

Truzzolino's
— CAFE —

120 W. Park

BUTTE, MONT.

WEIN'S

MONTANA'S LARGEST MEN'S
STORE

33, 35, 37 EAST PARK ST.

BUTTE

MOTHER'S WORK

Our Mother would, when we were small,
Take her sewing out to call;
She and Mrs. Smith would sit
And each get out her sewing kit,
Then they'd talk and patch of tears,
Sew on buttons, make repairs,
Pay their social debts and do
A lot of useful labor, too.

No matter to which house she went,
Mother's afternoons were spent
Doing work that should be done,
But seemingly, a lot of fun;
She'd come home with bits of news,
Lots of gossip, neighbors' views;
Such days furnished her a mint
Of news that never got in print.

But now when Mother goes to call
She doesn't take our clothes at all;
It isn't that she's prone to shirk,
But takes a different kind of Work.
Instead of shirts and buttons, she
Nowadays takes Milton C.,
And where she used to carry thread,
She packs a checkbook now, instead.

She brings home news and views no
more,
But memorizes every score
And talks of bids and tricks and slams,
Instead of weddings, clothes and hams;
Johnny Jones may have the croup,
But Mother doesn't give a whoop
Unless his mother couldn't come
And substituted someone dumb.

OUR SPECIALTY

Beautiful Sets of Teeth

Prices as low as First Class
Work Permits.

All Work Receives Personal
Attention.

Dr. F. A. Ironside

16 North Main St.
BUTTE

Largest Dental Office in
Montana

The Lockwood Dinners

Lunches Candies
Ice Cream

PRIVATE ROOM FOR PARTIES

Next to Leggat Hotel
BUTTE, MONTANA

Students Welcome

Established 1877

First National Bank

BUTTE, MONTANA

ANDREW J. DAVIS, President
A. J. DAVIS, JR., Vice President
GEORGE U. HILL, Vice Pres. and Cashier
J. F. LOWNEY, Assistant Cashier
GEO. F. CASSIDY, Assistant Cashier

Accounts of Banks, Merchants and
Individuals Solicited

LAGUE TAILORING CO.

First Nat. Bank Bldg.

BUTTE

Nash Clothes

SUITS AND TOP COATS

\$19.50

\$23.50

\$29.50

\$35.00

Your Way Is the Right Way
at

THE METROPOLITAN CAFE

BUTTE, MONTANA

"Where Meals Are Relished"

While in Butte Make

GAMER'S

Your Headquarters

Dainty Lunches

Dinners Candies

Ice Creams



Service Until Midnight

JUST A LITTLE SLIP

Since fashion has decreed

That skirts shall cover knees,
Man's viewpoint now depends
Upon sun instead of breeze.

With the light behind a subject

Who's assumed the proper stance,
The plumb of underpinning
May be measured

At a glance.

From having female profiles

So plainly placed in view,
The modern man is learning
More than Adam knew.

He has, at least, decided,

That for the ladies fair,
A slip's a tragic thing to make,
But a darn good thing

To wear.



KEEP YOUR CROWD TOGETHER AND TRAVEL
BY MOTOR COACH

on your

Picnics and Other Outings
PULLMAN CAR EQUIPMENT

For Terms on Chartered Coaches Apply to

Intermountain Transportation Company

129 W. Front St.

MISSOULA

Phone 3484

THE CURSE OF VERSE

Consider, please, the column bard,
Who works so terribly, terribly hard
To make his rhymes and meters fit
And be the very soul of wit;
He sits up, cursing, through the night
And does his level best to write,
To please his readers every day
By saying things a different way.

The column poet must abjure
The cause of better literature,
Rhyme a host of clever jokes
About a lot of other folks
And spend his life just cracking wise
So we may laugh at other guys,
Knowing well that only we
Are just as all mankind should be.

When in Butte

Stop at the
ARIZONA HOTEL

Park at Arizona

PHONE 6509

R. H. VEITCH, Mgr.

Repeatedly Chiropractors have demonstrated
that patients who thought they would have
to be operated upon have been saved through
Chiropractic. For particulars see

DR. PETER O. HOLM
CHIROPRACTOR

106-7 Pennsylvania Bldg., Butte
PHONE 3069

STUDENTS' INDEX

For

STYLES AND VALUES

at the

J. C. PENNEY CO.

The Gentry label on our men's clothing means
Snappy Styles that Fit.

"CO-EDS" and "EDS" AGREE

IT'S EASY TO BE FASHIONABLE IF YOU SHOP AT PENNEY'S

"Student Employees Will Serve You"

Nil Nite

THE GREATEST NAME IN AWARD SWEATERS

ON this name rests not only the responsibilities
incident to leadership, but also a trust, if you
please . . . for is not the son entitled to as
near perfection in his Award Sweater as the father?

Product of

OLYMPIA KNITTING MILLS, Inc.

OLYMPIA - WASHINGTON

Index to Advertisers



A

Anaconda Copper Mining Co.	216
Arizona Cafe (Butte)	220
Arizona Hotel (Butte)	225
Associated Students' Store	210

B

Barbara's Vanity Shop	198
B & H Jewelry Co.	207
Borg Jewelry & Optical Co.	217
Bourdeau Meat Market	220
Bourdeau Mercantile Co.	220
Brownbilt Shoe Store	203
Butte Cleaners	205

C

Central Fuel Co., Inc.	218
Chimney Corner	215
Clark's Service Station (Great Falls)	220
"Clorox"	210
Consolidated Dairies	211
Corner Cafe (Butte)	221

D

Daily, Inc., John R.	206
Dickinson Piano Co.	202
Dixon & Hoon	200
Donohue's	219

E

Eddy's Bakeries	204
Edgeworth	201

F

F. & W. Grand Silver Stores (Butte)	221
Fashion Club Cleaners	215
First National Bank (Butte)	224
First National Bank (Missoula)	212
Florence Hotel	199
Florence Hotel Barber Shop	206
Florence Laundry Co.	219
Fox-Rialto, Fox-Wilma	216

G

Gamer's (Butte)	224
Garden City Floral Co., Inc.	217
Golden Glo Creamery	211

H

Harkness Drug Store	216
Hart Refineries	202
Heinrich's Floral	219
Herrick's	199
Hi-School Candy and Cafe	206
Holm, Dr. Peter O. (Butte)	225

I

Intermountain Transportation Co.	225
Ironside, Dr. F. A. (Butte)	223

L

Lague Tailoring Co. (Butte)	224
Lockwood Cafe (Butte)	223

M

MacMarr Stores	212
McCracken Stores	216
McKay Art Co.	220
Majestic Candy & Beverage Co.	208
Master Cleaner and Dyer	204
Melander Studio	200
Metals Bank & Trust Co. (Butte)	222
Metropolitan Cafe (Butte)	224
Missoula Coal & Transfer Co., Inc.	212
Missoula Club	219
Missoula Drug Co.	201
Missoula Laundry Co.	208
Missoula Mercantile Co.	197
Missoulian Publishing Co.	214
Montana Power Co.	209
Moore Shop, Mary	218

O

Office Supply Co.	202
Olympia Knitting Mills, Inc.	220

P

Penney Co., J. C.	226
Peterson Drug Co.	198
Public Drug Store	200

Q

Quinn's Bakery	214
----------------	-----

S

Sandwich Shop—ramey's	213
Schramm-Hebard Meat Co.	210
Sentinel-Missoula Creamery, Inc.	205
Smith's Drug Stores	208
Sport Shop	198
Star Garage	204
Stein & Son	205

T

Taylor & Hill Bakery	214
Toggery	206
Truzzolino's Cafe (Butte)	222

W

Ward, Frank (Butte)	221
Wein's (Butte)	222
Western Montana National Bank	207
Woods Studio, Ace	203
Working, C. L.	218

Y

Yandt's	220
Youngren's Shoe Shop	213

1932 Sentinel Index



A		H	
Activities	169-191	Hendon	19
Administration	12	Hi-Jinx	183
Advertising	195-226	Home Economics Club	122
Alpha Chi Omega	141	Honoraries	103-114
Alpha Kappa Psi	113	I	
Alpha Phi	142	Independents	102
Alpha Tau Omega	129	Interchurch	102
Alpha Xi Delta	143	Interfraternity	128
Alumnus	178	Interscholastic	187-194
Athletic Board	57	Intramural	87-92
Athletics	55-99	Inter Co. Basketball	91
A. W. S.	100	Interscholastic Basketball	91
B		M Club Winners	91
Band	186	Minor Sports Team	88
Basketball	73-78	South Hall Basketball	92
Bear Paw	106	J	
Brannon	13	Jesse	17
C		Junior Officers	49
Central Board	101	Junior Roll	50
Clapp	15	K	
Classes	27-54	Kalmin	175-176
Clubs	115-126	Kappa Alpha Theta	146
Coaches	56	Kappa Delta	147
Copyright and Contents	5	Kappa Kappa Gamma	148
D		Kappa Psi	113
Debate	182	Kappa Sigma	131
Dedication	7	L	
Delta Delta Delta	144	Little Theatre	180-181
Delta Gamma	145	M	
Delta Sigma Lambda	130	M Club	123
Departments	14	Masquers	109
Druids	108	Miller	18
E		Minor Sports Board	58
Entrance to Main Hall	11	Mortar Board	104
F		N	
Fitzgerald	48	Newman Club	124
Football	59-72	North Hall	117
Forestry Club	120	P	
Forestry Kalmin	177	Pan-Hellenic	140
Forestry Rifle Club	119	Pharmacy Club	125
Fraternities	127-137	Phi Delta Theta	132
Freshmen Officers	53	Phi Lambda	114
Freshmen Roll	54	Phi Sigma	110
Frontier	178	Phi Sigma Kappa	133
G		Pollinger	19
Glee Club (Men's)	184	Press Club	121
Glee Club (Women's)	185	Publications	171-178

S	
Scenic	151-168
Scheuch	16
Schools	20-26
Business Administration	20
Education	21
Forestry	22
Journalism	23
Law	24
Music	25
Pharmacy	26
Sedman	18
Senior Officers	28
Senior Section	29-47
Sentinel	172-174
Sigma Alpha Epsilon	134
Sigma Chi	135
Sigma Delta Chi	111
Sigma Kappa	149
Sigma Nu	136
Sigma Phi Epsilon	137
Silent Sentinel	105
Sophomore Officers	51
Sophomore Roll	52
Sororities	139-150
South Hall	118
Spanish Club	126
Speer	17
Stage	179-186

T	
Tanan-of-Spur	107
Theta Sigma Phi	112
Title Page	3
Track	79-86

U	
University	9-26

W	
W. A. A.	94
Women's Athletics	93-98
Baseball	95
Basketball	95
Hockey	96
Swimming	97
Track	98
Volleyball	98

Y	
Yell Kings	114

Z	
Zeta Chi	150

Appreciation



We, the members of the 1932 Sentinel staff, wish to take this opportunity of expressing our appreciation to the many firms and individuals whose efforts have helped us to make the publication of this book successful.

We are especially indebted to Mr. Charles W. Hardy, Mr. Clyde Jones, Mr. Fred Miller, Mr. Fred Lawry, Mr. Norman Tufty and Mr. and Mrs. Ace Woods.

